

INSTALLATION INSTRUCTIONS
SBX-5008 mounting base for C-SBX-101 Box
Also for SBX-4011 or SBX-4013 Riser brackets used with SBX-1000
Series drawers
2021-2026 Chevrolet Tahoe PPV
Fits with Havis standard length K9 inserts (K9-C26 and K9-C26-B)

TOOLS REQUIRED:

Standard Socket Set

5/32" Allen Key/hex bit

T50 Torx

Metric Socket Set

PARTS and MOUNTING HARDWARE:

<u>QTY</u>	<u>DESCRIPTION</u>	<u>ITEM#</u>
2	Rear Floor Brackets	24807
1	DS Front Floor Bracket	24809
1	PS Front Floor Bracket	24810
1	Base Plate	25356
2	1" Hole Plug	15803
10	1/4-20 x 1/2" Flat head Screw with Patch	25522
2	M10x1.5 x 45mm Hex Bolt	16518

NOTE:

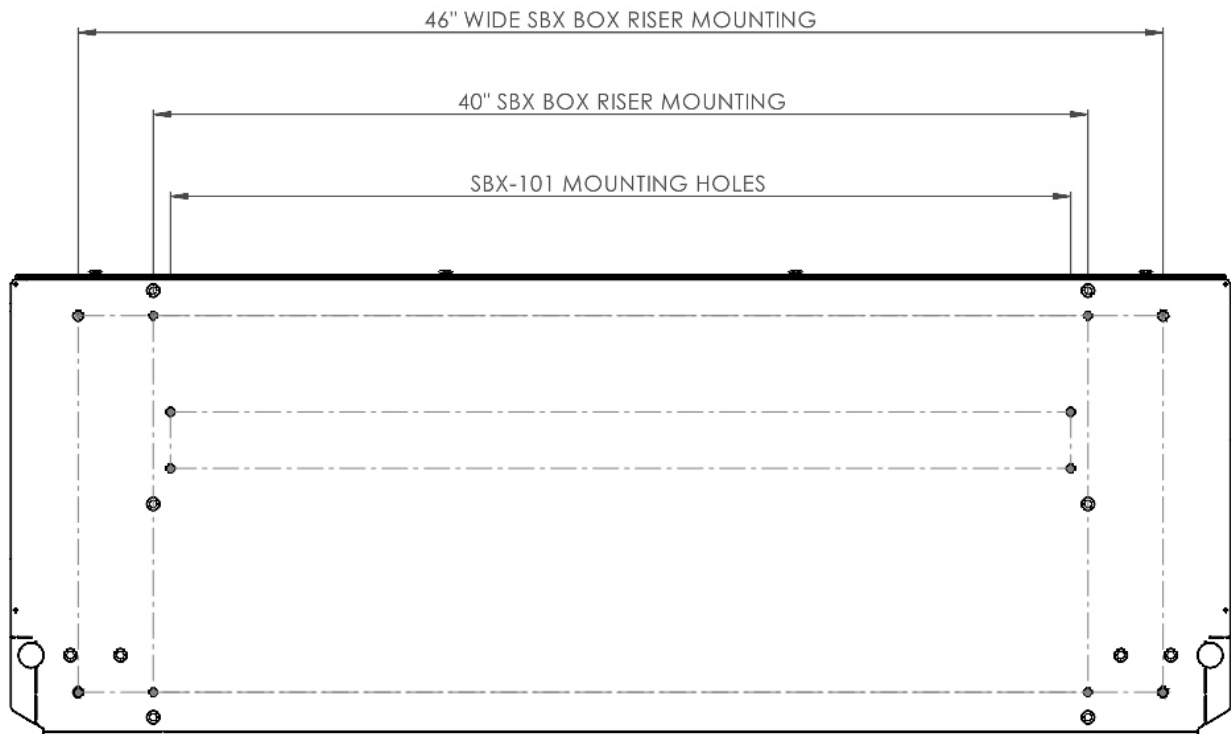
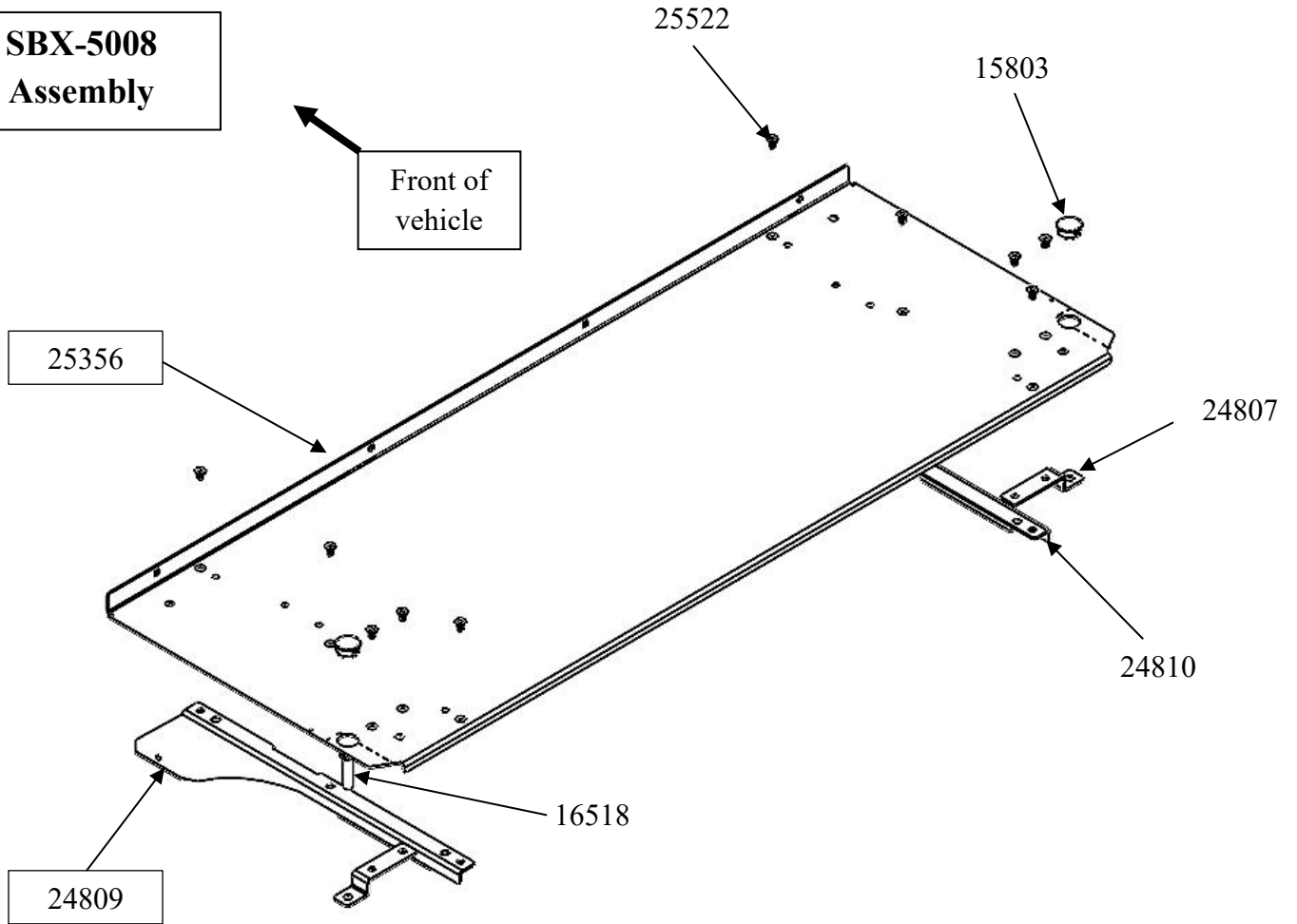
Optional SBX-4011 or SBX-4013 Riser brackets are needed for mounting SBX-1000 series drawers on SBX-5008 or SBX-5010 base plate assemblies.

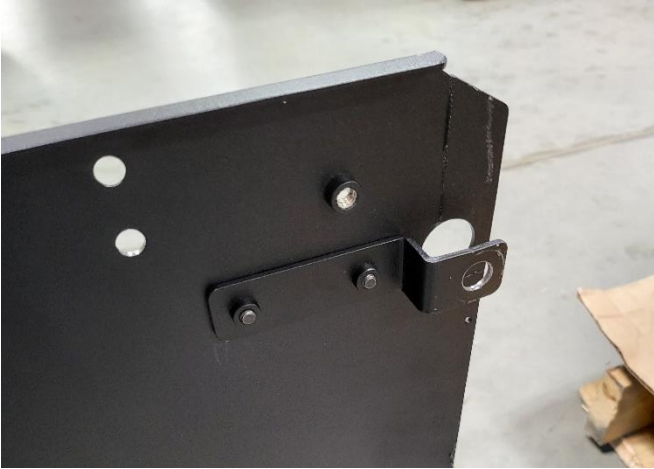
See SBX-4011 / SBX-4013 instructions for additional riser bracket details.

Always!

- Read all instructions before installing any Havis, Inc. products.
- **Check for obstructions (Wires, brake lines, fuel tank, etc.) before drilling any holes!**
 - Use hardware provided with install kit

**SBX-5008
Assembly**





Loosely attach rear floor brackets to both sides of the base plate using supplied 1/4" x 1/2" Flat head bolts.

NOTE: For next step, it may be necessary to lay tray in vehicle to help find threaded holes under rubber mat.



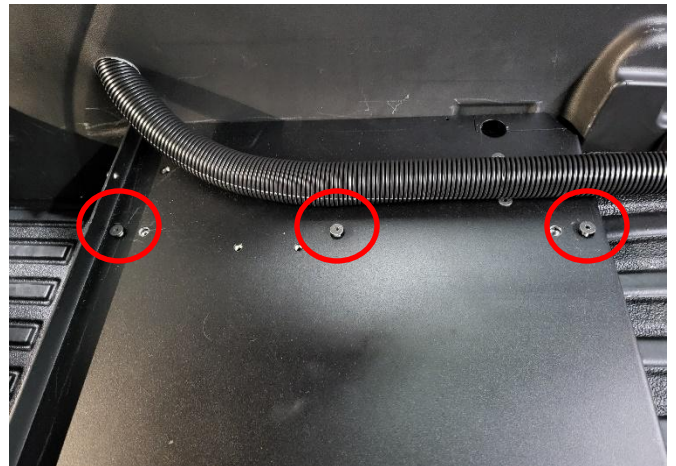
NOTE: Remove padding as necessary to allow supplied M10 bolt to pass through to OEM threaded hole. Repeat for both sides. Front brackets can sit on the padding.



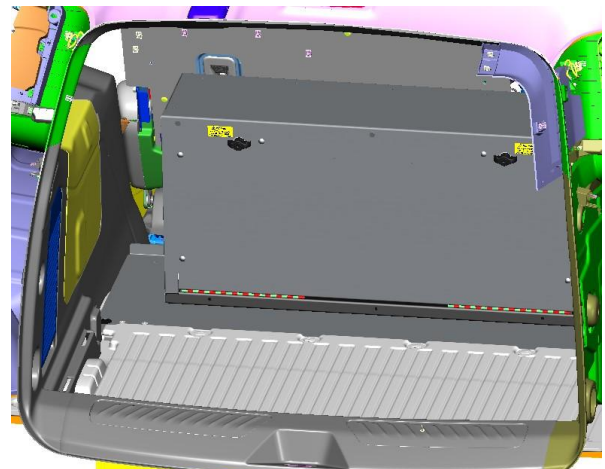
Loosely attach rear floor brackets to rear seat belt anchors on each side with OEM 12mm Torx bolts. Add 1" hole plug after hardware is tightened.



Determine 3rd row seat bolt locations in floor and loosely attach front floor brackets with supplied M10 bolts. Temporarily remove OEM M12 bolts from the rear seat belt anchor locations. (T50 Torx)



Loosely attach base plate to front floor brackets using supplied 1/4" x 1/2" Flat head bolts. (3 each side)



Attach C-SBX-101 to base plate using 1/4" x 1/2" bolts and washers included with box. Tighten all floor mount hardware. Installation complete.