

INSTALL INSTRUCTIONS C-TTB-CHGR-4

2011 – 2020 DODGE CHARGER HEAVY DUTY TRUNK TRAY

TOOLS REQUIRED:

Ratcheting Wrench

Metric/Standard Socket Sets

Tape Measure

Power Drill

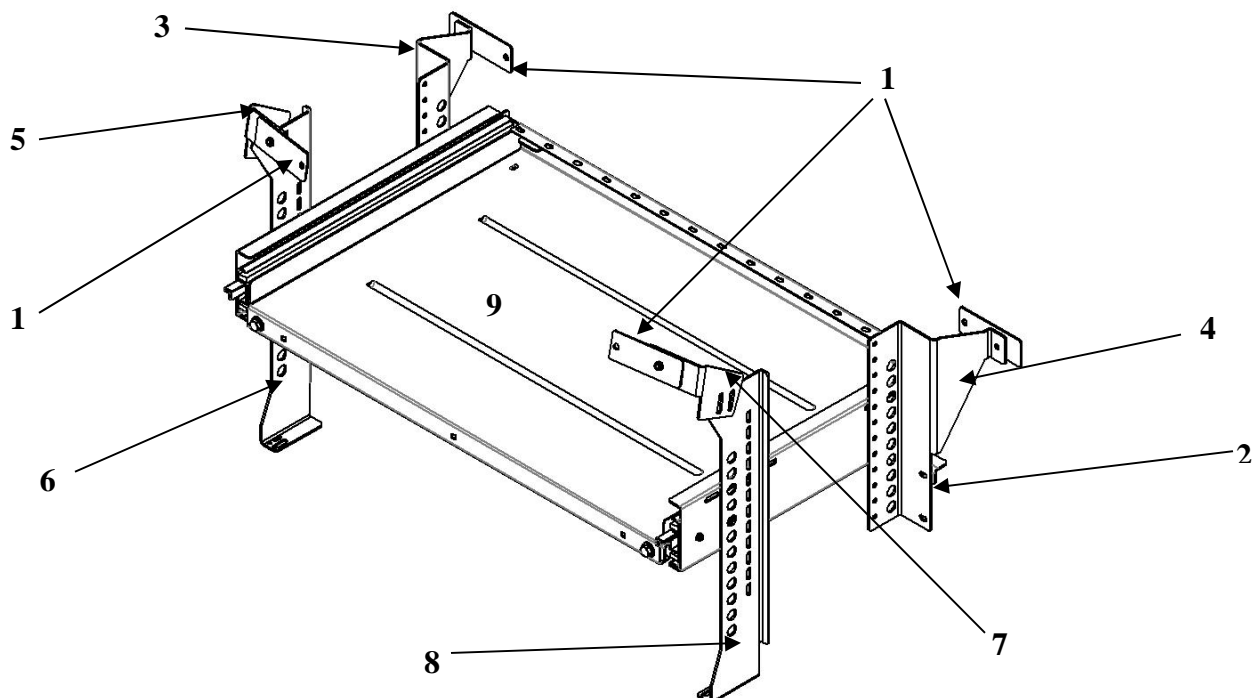
Utility Knife

Phillips Screwdriver

Jigsaw

PARTS and HARDWARE:

<u>ITEM</u>	<u>QTY</u>	<u>DESCRIPTION</u>	<u>PART #</u>
1.	4	Reinforcement backing (Nut) Plate	CM001550
2.	1	Cross Brace	CM001545
3.	1	Driver side front support mounting bracket	CM004769
4.	1	Passenger side front support mounting bracket	CM004770
5.	1	Driver side rear upper bracket	CM004340
6.	1	Driver side rear support bracket	CM004768
7.	1	Passenger side rear upper bracket	CM004388
8.	1	Passenger side rear support bracket	CM004771
9.	1	Slide Tray and Frame Assembly	CM004772
	1	C-HK-272-CHGR-4 Hardware kit <i>(kit includes the following)</i>	
	24	1/4" Flat washer	GSM31005
	20	1/4" Serrated nut	GSM30023
	16	1/4" x 3/4" Hex head bolt	GSM33001
	4	1/4" x 1" Hex head bolt	GSM33002
	2	1/4" x 1 1/4" Hex head bolt	GSM33003



Always!

- ❖ Read all instructions before installing any Havis, Inc. products.
- ❖ Check for obstructions (Wire, brake lines, fuel tank, etc.) before drilling any holes!
- ❖ Use hardware provided with install kit.

Notes: There are two different types of Trunk packages for the Dodge Charger:

- 1. Police package w/ rubber floor mat and full size spare tire.*
- 2. Police package w/ carpeted Liner and donut size spare tire.*

This will affect the modification of the trim in the trunk.

*It is also recommended to remove the back seat for ease of installation.
In most cases this must be done anyway to route wiring.*



Trunk with full size spare tire



Remove upper trunk liner if desired.
It is not necessary to completely remove, but it may make bracket installation easier.



Remove spare tire/jack hold down bracket (15mm, 13mm, 18mm)



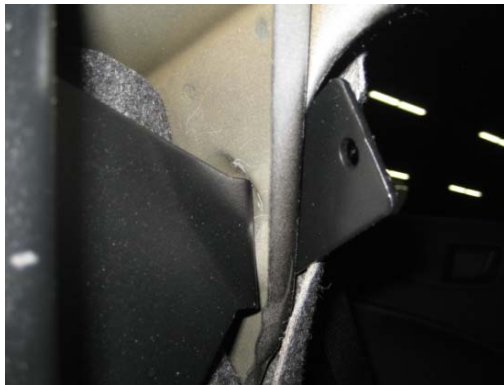
Trunk with carpeted liner and donut size spare tire.



Remove carpeted floor liner for bracket installation.
Remove upper trunk liner if desired.



Cut interior trunk liner approximately 5" inches to expose forward upper mounting hole area. (both sides)
**Forward brackets may be easier to install if seat back is removed.*



Loosely attach front support mounting brackets using nut plate between seat wall and backseat. 1/4"x 1" hex bolt & washer (7/16" socket)



View of attached front support mounting bracket



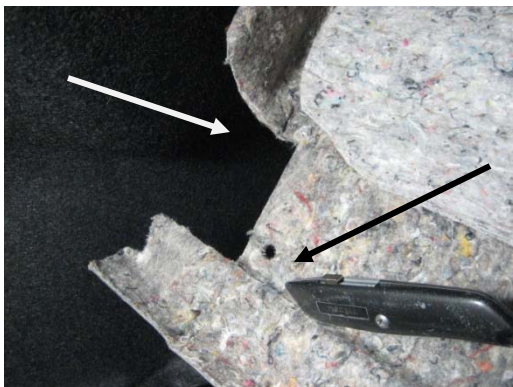
Rear Bracket mounting.
 Insert nut plate into existing holes as shown.



Loosely attach rear upper bracket with 1/4" x 3/4" Hex head bolt & washer (7/16" socket)



Loosely attach rear support bracket with two (2) 1/4" x 3/4" Hex head bolts, washers and serrated nuts (7/16" socket)



Upper trunk liner will need to be cut out on sides for rear upper bracket clearance.



Add two more cuts so liner will fold down to allow access to mounting hardware as shown.

Note: OEM plastic push in retainers will hold flap up when complete.



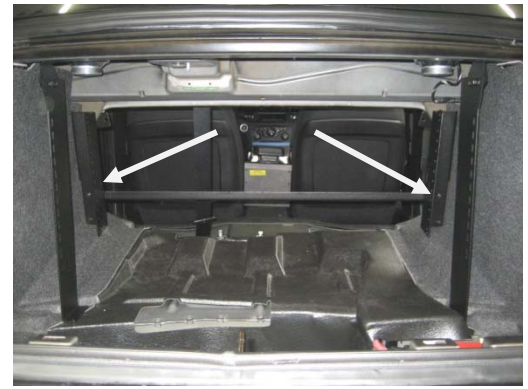
Driver side brackets in place.



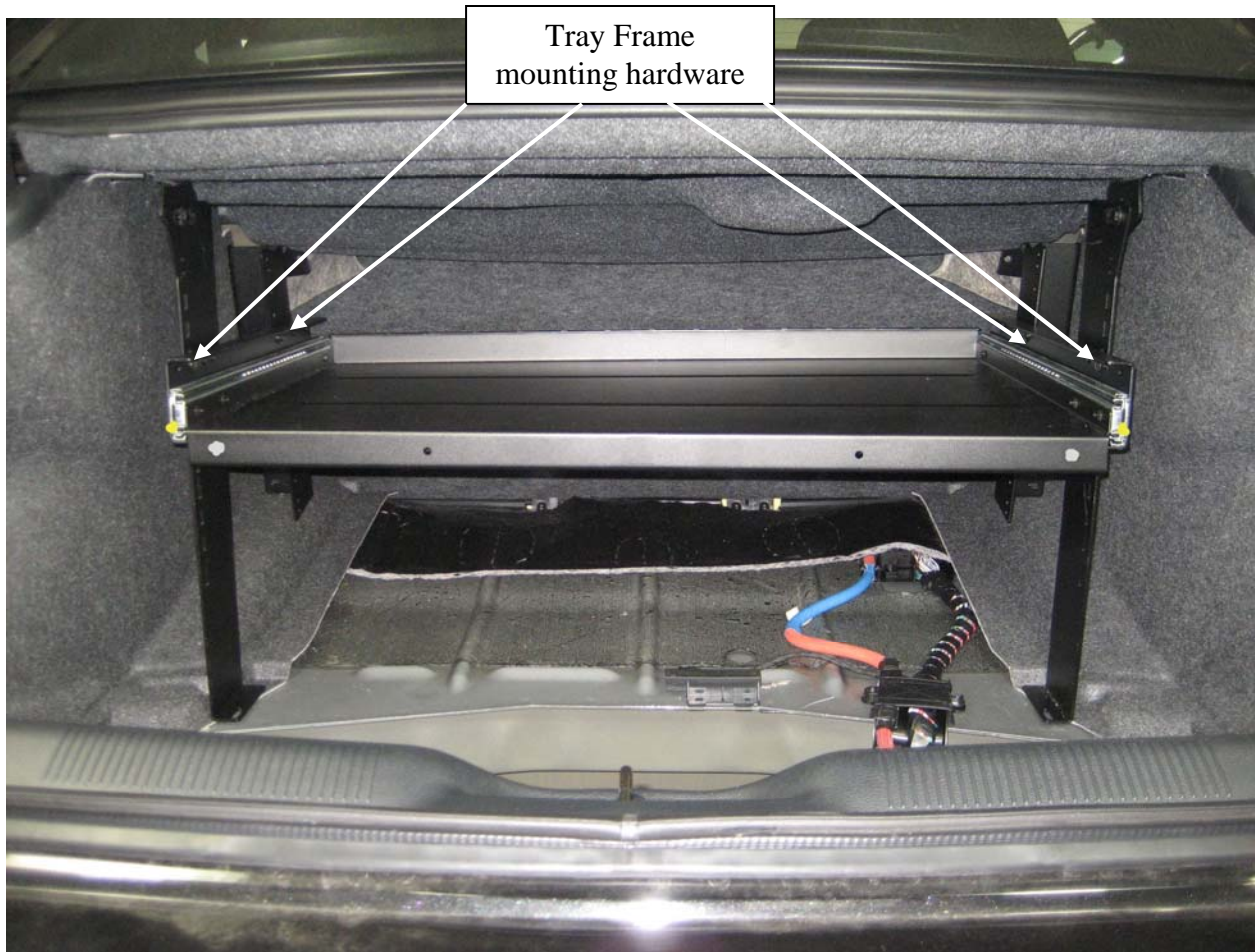
Passenger side brackets in place.



Forward bracket is positioned slightly above trunk liner.

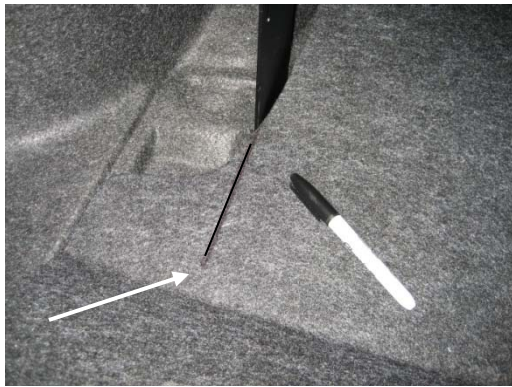


Attach Cross Brace to forward brackets with two (2) 1/4" x 3/4" Hex head bolts, washers and serrated nuts (7/16" socket)



Attach tray frame assembly to mount brackets using 1/4" x 3/4" hex bolts & serrated nuts. Adjust tray and tighten all loose hardware

NOTE: Newer Trays have Extra Heavy Duty slides with lock in / lock out latches on the end of each slide. The tray mounting surface is also easy to remove for bench pre-installation assembly.



Place floor liner into trunk and slide forward against rear brackets. Mark a straight line at bracket location.



Line to be cut will be approximately 5" inches long x 1/4" wide to go around bracket.



Cut floor liner to accommodate brackets with jig saw.



View of completed floor liner back in the original position.



View of 2011 Charger Police Package with carpeted liner and donut size spare tire



View of 2011 Charger Police Package with rubber floor mat and full size spare tire

NOTE: Newer Trays have Extra Heavy Duty slides with lock in / lock out latches on the end of each slide. The tray mounting surface is also easy to remove for bench pre-installation assembly.