

INSTALL INSTRUCTIONS C-HDM-1016

Heavy-Duty Center Mount for 2020-2026 Ford Transit

TOOLS REQUIRED:

Metric and standard socket set

Panel removal tool

Metric and standard wrench set

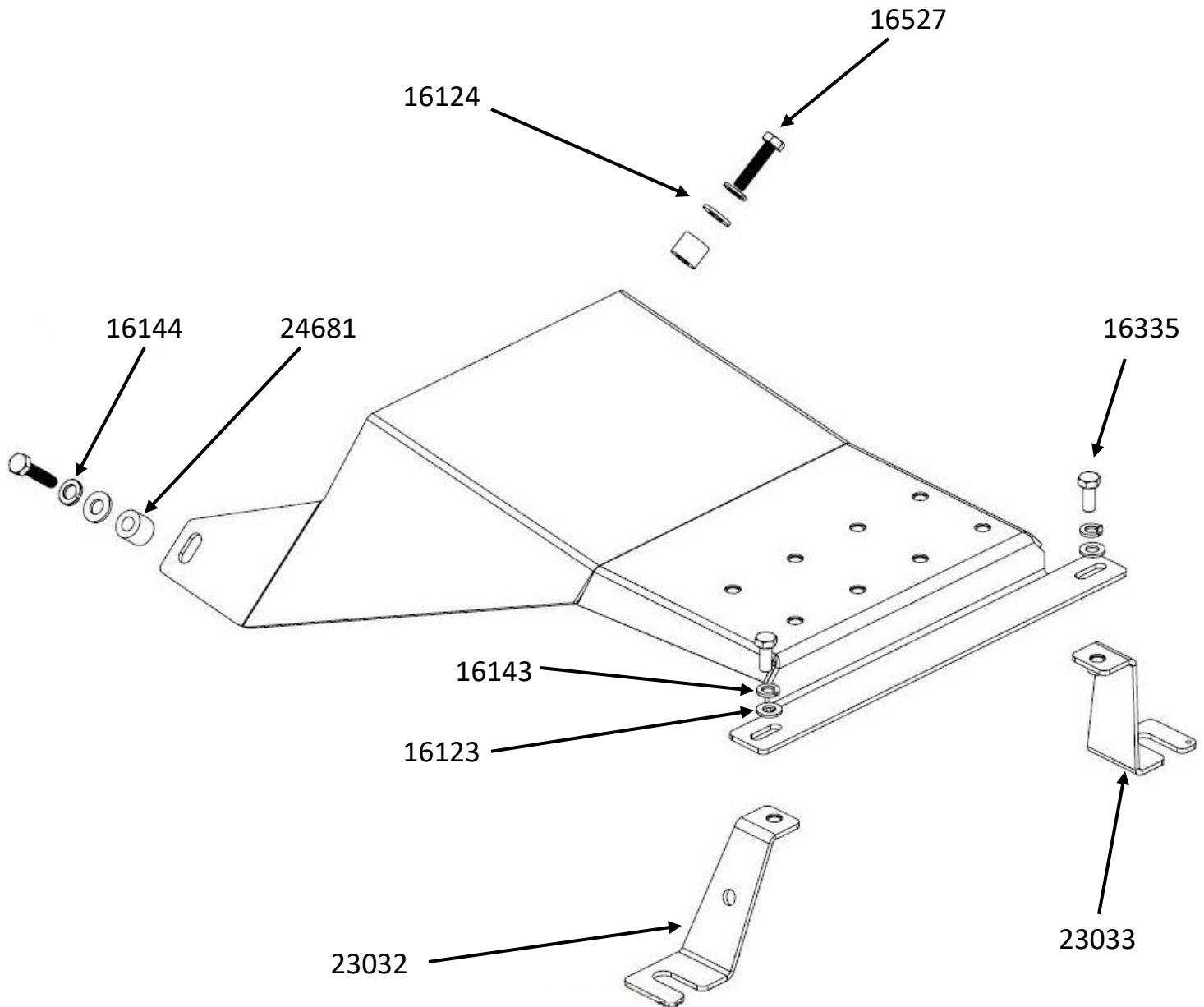
PARTS and MOUNTING HARDWARE:

<u>QTY</u>	<u>DESCRIPTION</u>	<u>PART#</u>
1	Main HDM base	23031
1	DS seat mounting bracket	23032
1	PS seat mounting bracket	23033
2	Aluminum spacer 0.38X0.75X0.625	24681
2	5/16" Flat washer	16123
2	3/8" Flat washer	16124
2	5/16" Split lock washer	16143
2	3/8" Split lock washer	16144
2	5/16 x 3/4" bolt	16335
2	M8 x 35mm bolt	16527

Always!

- Read all instructions before installing any Havis, Inc. products.
- **Check for obstructions (Wires, brake lines, fuel tank, etc.) before drilling any holes!**
 - Use hardware provided with install kit

C-HDM-1016

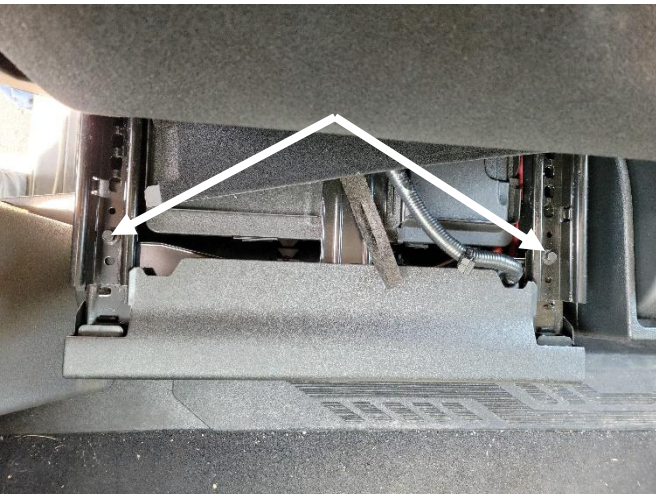




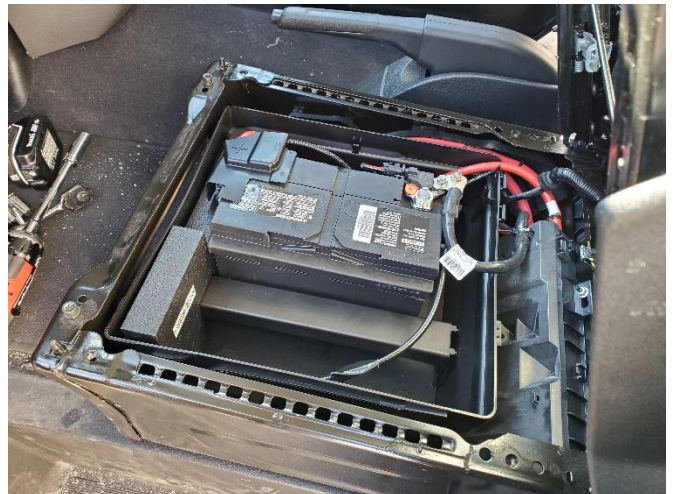
View of Transit prior to install.



Remove front bolts that attach driver seat to pedestal base.



Remove rear bolts that attach driver seat to pedestal base.



Lean driver seat back to gain access to under seat battery tray.



Loosen front, inner seat base bolts.



Place driver side rear-mounting bracket under seat base and tighten bolt. Reinstall previously removed driver seat.



Remove inner front seat base bolt on passenger side. This can be accessed without removing the seat if desired.



Place passenger side rear-mounting bracket under seat base and tighten bolt. Reinstall previously removed passenger seat.



Remove cup holder assembly and shifter plate. Unplug harnesses and set panels aside.



Remove OEM fasteners from lower trim assembly.



Unclip lower trim from above glove box.



Remove trim and set aside.



Remove OEM fastener.



Remove trim assembly from center, dash.



Unclip lower knee bolster trim and remove OEM fasteners from center dash assembly.



Remove OEM center dash assembly.



Remove covers from lower dash, trim assembly.
Remove hardware and trim.



Remove rear bolt from lower dash brace on each side. Hardware will not be reused.



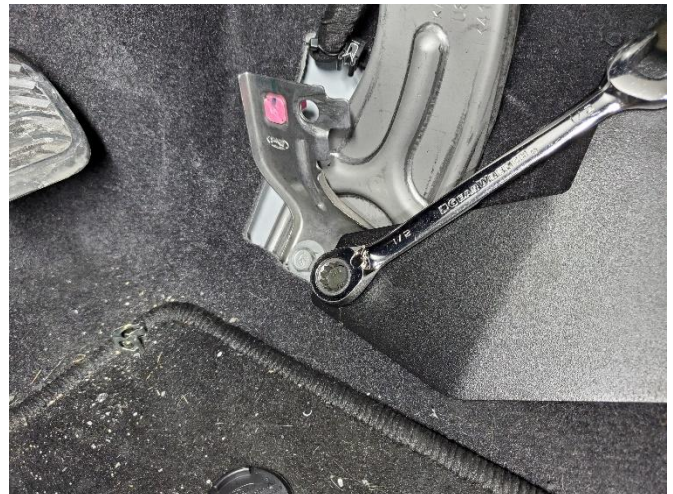
Add supplied spacer over previously removed bolt. Repeat process for other side.



Slide HDM base up to lower dash brace and align with spacers.



Attach base to floor with supplied M8 x 35mm bolts, split lock washers and flat washers.



Tighten hardware. Reinstall all previously removed dash trim.



Attach HDM base to rear-mounting brackets using 5/16" x 3/4" bolts, split lock washers and flat washers.



Attach pole motion device and computer. Installation is now complete.