

INSTALLATION INSTRUCTIONS C-VS-2000-EXPL

22" Vehicle specific console 2025 Retail Ford Explorer

TOOLS REQUIRED:

Metric socket set	Ratchet	Panel removal tool	T-20 Torx driver
Pick tool	Standard wrench set	Standard socket set	Phillips screwdriver

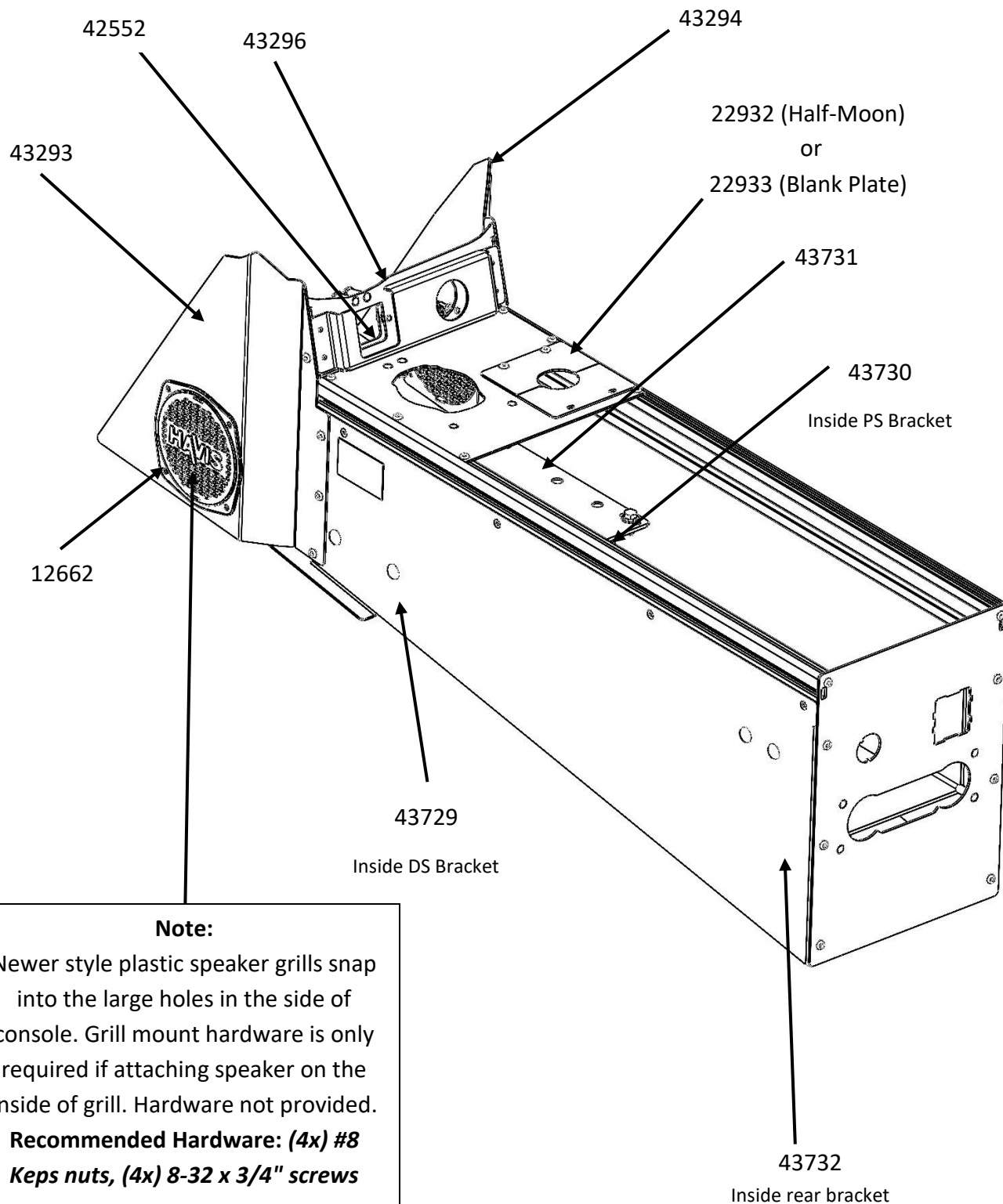
PARTS and MOUNTING HARDWARE:

<u>QTY</u>	<u>DESCRIPTION</u>	<u>PART#</u>
1	Rear floor mounting bracket	43732
1	Front cross support bracket	43731
1	Driver side floor mounting bracket	43729
1	Passenger side floor mounting bracket	43730
1	Driver side trim panel	43293
1	Passenger side trim panel	43294
1	Parking brake backing plate	42552
2	Speaker grill	12662
2	Half-moon cover plate	22932
1	Blank cover plate	22933
1	Shifter plate assembly	43296
18	#8 x 3/8" Torx screws	13405
10	1/4" Serrated nut	16013
6	#8 Flat washer	16119
6	1/4" Flat washer	16122
6	1/4" Split lock washer	16142
2	1/4" x 1" Fender washer	16210
8	1/4" x 3/4" Carriage bolt	16223
6	1/4" x 3/4" Hex head bolt	16326
6	8-32 x 1/2" Phillips machine screw	16392
1	1/4" nuts for side rail track (includes 12)	25520
4	#10 Flat washer	16120
4	10-32 x 1/2" Phillips machine screw	16399

Always!

- Read all instructions before installing any Havis, Inc. products.
- **Check for obstructions (Wires, brake lines, fuel tank, etc.) before drilling any holes!**
 - Use hardware provided with install kit

C-VS-2000-EXPL





View of 2025 Ford Explorer interior prior to install



Remove (1) bolt each side at rear of OEM console.

(10mm socket)



Unsnap OEM console lower trim on driver and passenger sides.
Remove (1) bolt each side from forward end of the console. (7mm socket)
Unplug USB on driver side



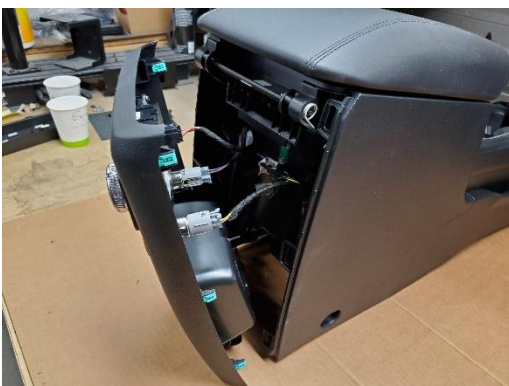
Remove (1) bolt each side from side of console. (10mm socket)
Disconnect (2) plugs at front passenger side of console.



Disconnect (2) plugs from both middle sides of OEM console.
(Driver side not shown)



Slide OEM console away from dash and remove from vehicle.



Remove OEM rear end panel and disconnect all plugs.



Remove rear 12v sockets and rear HVAC control from OEM console end panel.



Relocate OEM 12v sockets and rear HVAC control to new end panel.
Attach control with supplied 10-32 x 1/2" screws and flat washers.



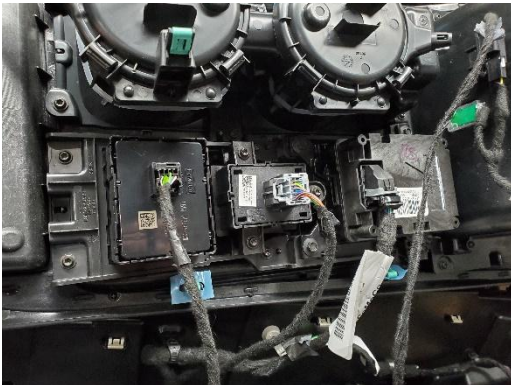
Remove OEM aux panel and 12v socket from forward section of OEM console.



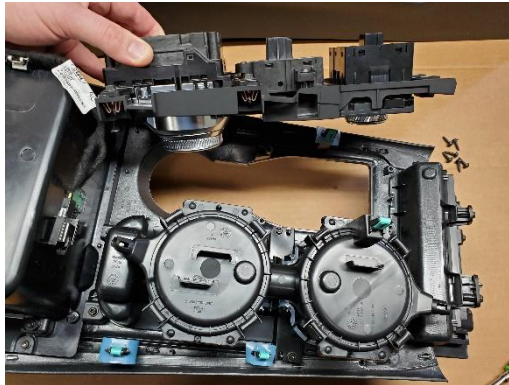
Gently pry up top of console using a panel removal tool.



View of top lifted up.



Disconnect all wire plugs



Remove section with housing shifter, terrain control, and emergency brake switch.
(T-20 Torx bit)



Unscrew the drive mode switch, parking brake and shifter from the bezel.



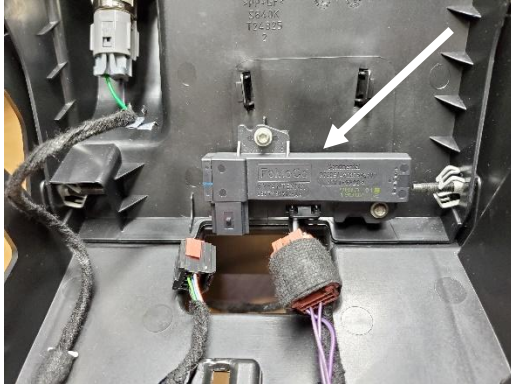
Install 42552 backing plate using supplied 8-32 keps nuts



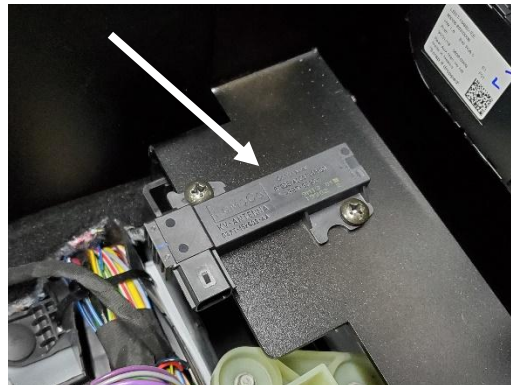
Install previously removed parts into new shifter plate using supplied 8-32 x 1/2" Phillips machine screws and flat washers.



Remove side panels from OEM console and remove harness. Harness will need to be re-installed into vehicle.



If vehicle is equipped with a proximity key, the sensor will need to be unscrewed and relocated. This is located inside of the OEM console.



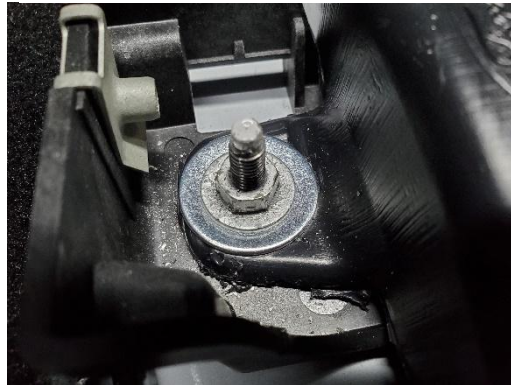
Relocate sensor to rear floor mounting bracket using supplied 1/4" x 3/4" bolts, washers, and serrated nuts.



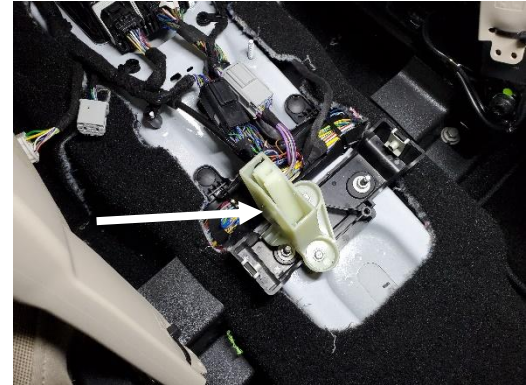
Remove OEM nuts from studs on front section of floor.
Note: Nuts may be under vent tube mount flange from factory.



Install driver and passenger side forward floor mounting brackets under OEM vent tube and bracket.
Mounting brackets must be resting on metal floor.



Bolt brackets to studs with supplied 1/4" x 1" fender washer and OEM nut. Washers prevent nuts from slipping through hole in vent tube mount flange.



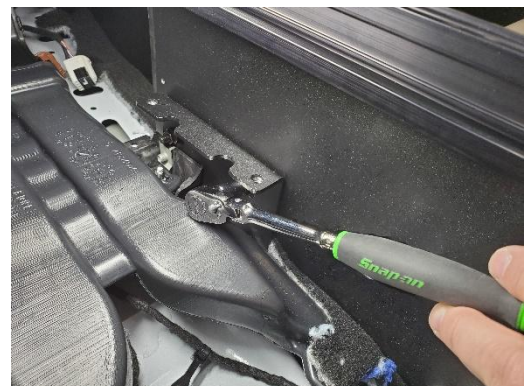
Note: Plastic parking brake override lever shown. This can be accessed after new console installation by removing top panels or accessories.
See OEM owner's manual.



Attach rear floor mount bracket with previously removed rear 10mm head bolts. Make sure bracket is level and tighten bolts.



Slide console housing into vehicle and line up to forward mounting brackets.



Attach console to front and rear mounting brackets using 1/4" x 3/4" carriage bolts and serrated nuts.



Attach cross support to forward mounting brackets using (4) 1/4" x 3/4" hex head bolts, split lock washers, and flat washers.



Plug OEM harness back in and route throughout console. Plug into shifter, emergency brake, and drive mode switches. Attach panel assembly to console with (5) #8 x 3/8" Torx head screws.



Attach speaker grills to side filler panels and attach fillers to console with #8 x 3/8" Torx head screws.



In addition to speaker grill, install previously removed OEM USB aux panel and 12v socket into passenger side filler panel.



Half-moon cover plate shown with optional C-HDM-208 pole bolted to cross over bracket. Blank cover plate is used if pole is not installed.



Wire and mount equipment.



Installation is now complete



Optional C-HDM-208 shown with C-MD-119, and DS-PAN-1111

