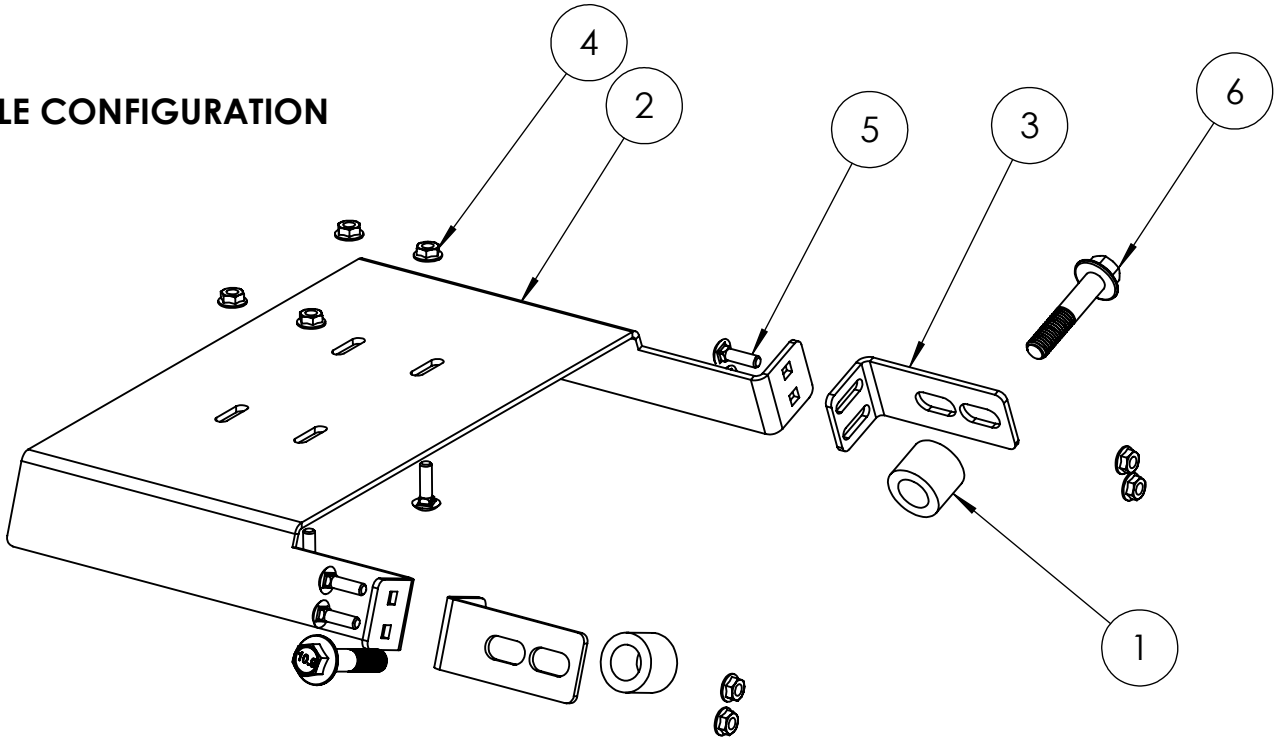


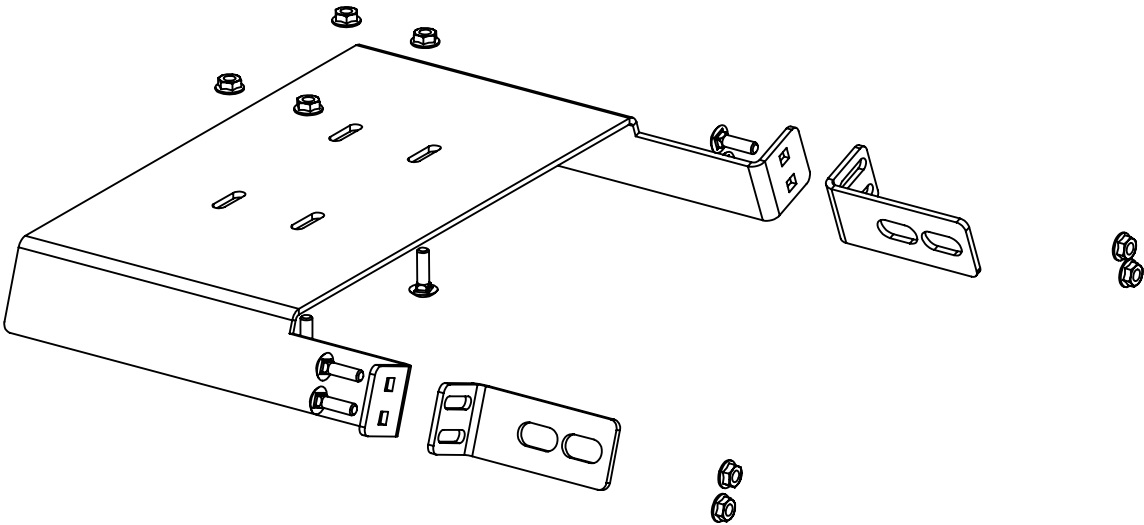
INSTALLATION INSTRUCTIONS:

1. Insert four 1/4-20 x 3/4" carriage bolts 5 in hump bracket 2 . Place hump bracket on center hump of vehicle.
2. Remove the front OEM console bolts or seat bolts.
3. Loosely attach the side brackets 3 using four 1/4-20 x 3/4" carriage bolts 5 and nuts 4 . Note: orientation depends on configuration of vehicle.
4. Install Havis console to center carriage bolts using 1/4-20 nuts 4 .
5. If the vehicle has a center seat, reuse OEM bolts to loosely attach side brackets.
6. If the vehicle has a center console, insert 1" spacers 1 under the side brackets and use M12x1.75-60mm bolts 6 to loosely attach the side brackets.
7. Tighten side bracket carriage bolts.
8. Tighten OEM bolts or M12x1.75-60mm bolts.

CENTER CONSOLE CONFIGURATION



CENTER SEAT CONFIGURATION



LINE	QTY.	ITEM NUMBER	DESCRIPTION
1	2	11441	SPACER, 1"
2	1	13274	BRKT, FWD HUMP, 19 SILVERADO 1500
3	2	13315	BRKT, DS HUMP, 19 SILVERADO 1500
4	8	16086	NUT 1/4-20 HEX FLANGE SERRATED ZP
5	8	16235	BOLT 1/4-20 X 3/4 CARRIAGE SS
6	2	23860	SCR,M12x1.75-60,HF,H,ZN,YLW,G10

WARNING: ALL HAVIS INC. PRODUCTS ARE DESIGNED WITH SAFETY OF USE AND INSTALLATION IN MIND. HOWEVER, IT IS THE SOLE RESPONSIBILITY OF THE OWNER/OPERATOR OF A VEHICLE USING HAVIS INC. MOUNTING AND DOCKING EQUIPMENT, TO INSURE THAT THE EQUIPMENT IS INSTALLED SO THAT IT WILL NOT INTERFERE WITH VEHICLE OPERATION, INTERFERE WITH SAFETY DEVICES, OBSTRUCT VIEW OF DRIVING CONDITIONS, OR IN ANY WAY DEGRADE OCCUPANT SAFETY. IMPROPER INSTALLATION CAN CAUSE SERIOUS INJURY IN THE EVENT OF AN ACCIDENT. INSTALLATION SHOULD ONLY BE PERFORMED BY QUALIFIED PROFESSIONALS. COMPUTERS AND MOTION DEVICES MUST BE MOVED TO AND STOWED/SECURED IN THEIR SAFE DRIVING POSITIONS BEFORE OPERATING VEHICLE.

DRAWING NO.
30-010301_INST-12-20

PRODUCT DESCRIPTION
ASSY, FWD HUMP MOUNT,
STANDARD SILVERADO 2019


1-800-524-9900
WWW.HAVIS.COM

WEIGHT: (LBS)
5.766
REV. DATE
12-2020