

# INSTALLATION INSTRUCTIONS

## C-DMM-3009 Flip up Dash Monitor Mount

**2009-2020 Ford E-350 & E-450 Cutaway and 2009-2014 Ford Econoline  
2008-2016 Ford F-250, 350, 450 Super Duty Trucks and 550 Cab Chassis  
2008-2019 F-650 and F-750 Cab Chassis**

### TOOLS REQUIRED:

- Ratchet Wrench
- Socket Set
- Open End Wrenches - 7/16", 9/16"
- Phillips Screwdriver (short)
- Dash panel removal tool
- Wire strippers/cutters

### HARDWARE and PARTS:

<u>QTY</u>	<u>DESCRIPTION</u>	<u>PART#</u>
1	Main support bracket	CM009573
2	Side Support bracket	CM002987
1	VESA rotator plate	CM010471
2	1/4" x 3/4" Carriage bolts	GSM32000
1	PVC washer	CM010648
2	1/4" Plastic washer	CM86600
2	1/4" Nylock nut	GSM30016-1
6	1/4" Steel washer	GSM31005
4	1/4" x 3/4" Phillips pan head screw	GSM33124
4	1/4" Lock washer	GSM31026
4	10-32 x 5/16" Phillips flat head screw	GSM33550
2	3/8" Flat washer	GSM31007
1	3/8" Nylock nut	GSM30018
1	3/8" x 1 Hex head bolt	GSM33028
4	8-32 Keps nut	GSM30027

### Notes:

The C-DMM-3000 swivel plate accepts C-MM-301 offset bracket used with C-MM-2XX adaptors.

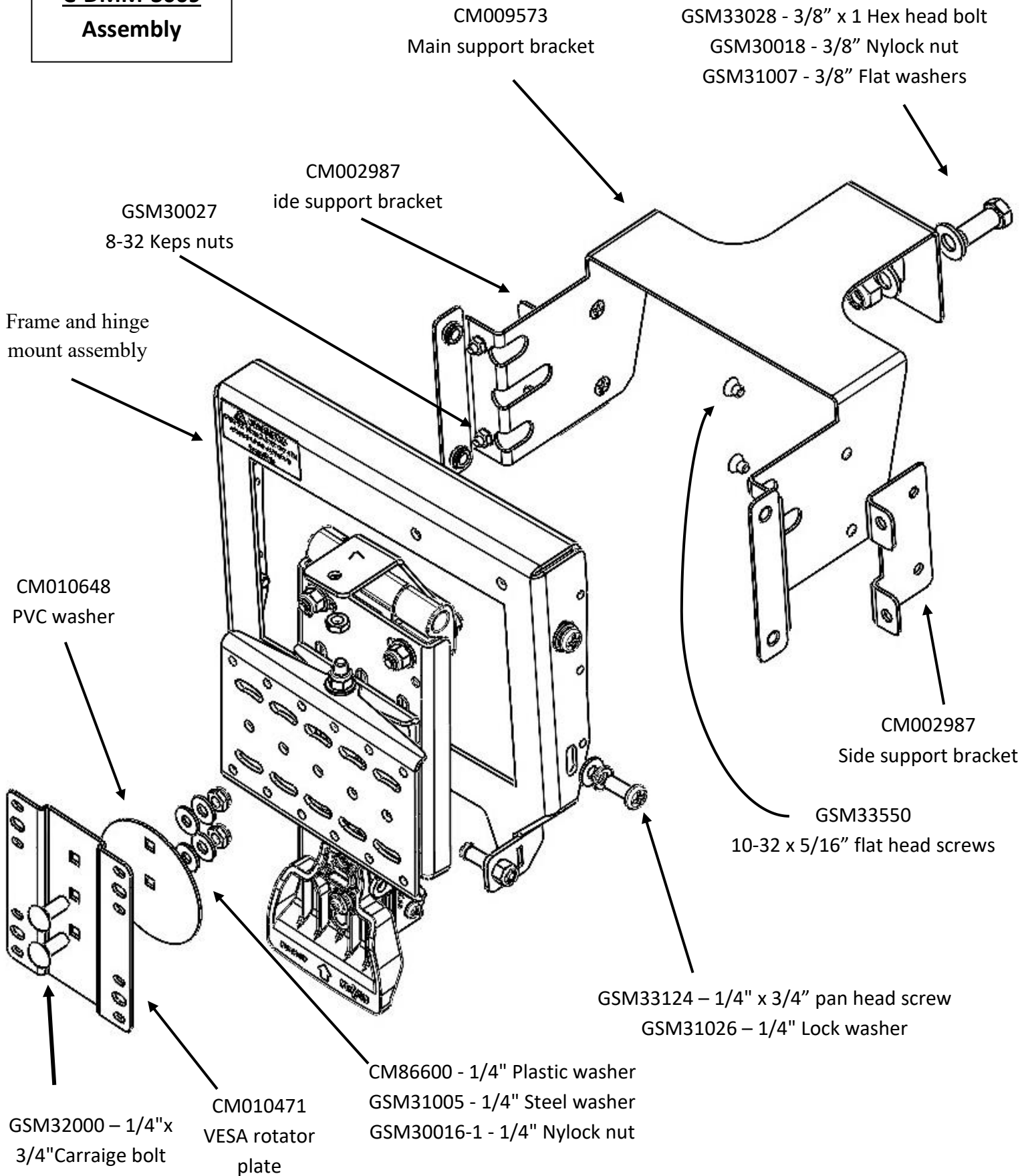
C-MM-2XX series adaptor brackets are not needed for most VESA 75 and other Havis Docking Station mounting applications.

CM010471 VESA rotator plate gives additional positioning options, but is not required depending on mounting preference.

### ALWAYS!

- Read all instructions before installing any Havis, Inc products.
- Use hardware provided with install kit

**C-DMM-3009  
Assembly**

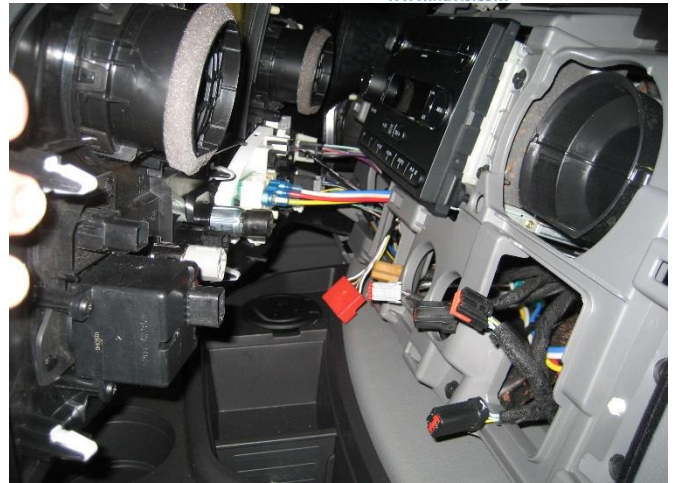






**Ford E-450 Cutaway center instrument panel.**

Prior to installation.



Carefully unsnap Passenger side of center dash panel, but don't completely remove. Unplug items as needed in order to remove AM/FM radio.

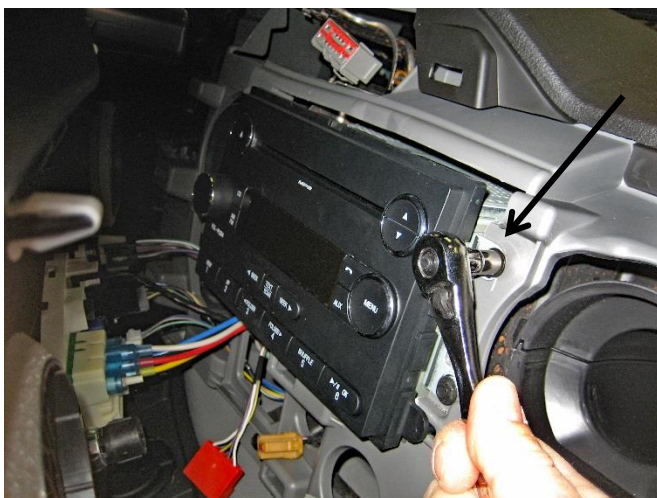


Driver side of dash does not need to be removed, but you must be careful not to over stress plastic parts while pulling out passenger side of dash.



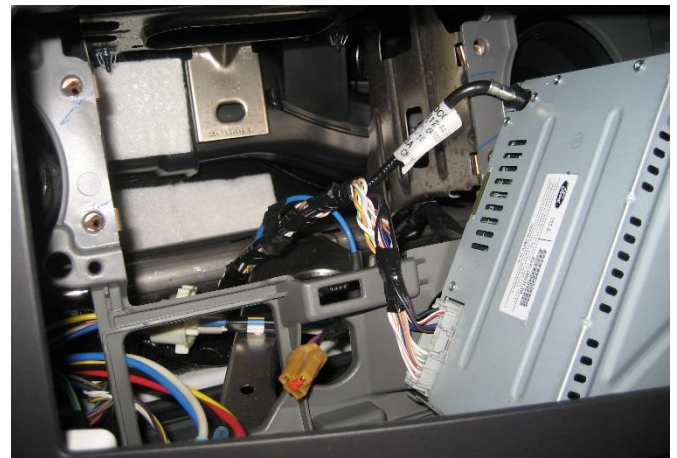
**Ford F-250 center instrument panel.**

Pop out lower side accessory modules and remove screw on each side. Carefully unsnap panel to access radio and follow the same steps as shown in the following van application.



Remove AM/FM Radio mount hardware  
(7mm socket)

Save screws (to be reused)



Unplug and carefully remove the AM/FM radio towards passenger side.





Using OEM radio screws, attach driver and passenger side CM002987 support brackets.  
Driver side shown.



Reconnect plugs and reinstall center dash panel.



Insert and loosely attach CM009573 Main support bracket to forward dash frame with 3/8" x 1" Hex Bolt, (2) flat washers and Nylock nut.



Line up main bracket side holes with the side bracket threaded holes. Attach with 10-32 x 5/16" flat head screws. Two (2) each side.



Plug in radio wiring and slide radio back into the dash. Attach radio onto the four (4) bracket studs with 8/32 nuts.



Place frame and hinge mount assembly onto support brackets.





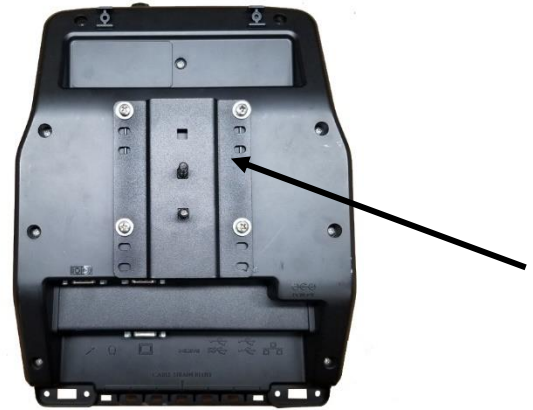
Attach frame assembly to support bracket with 1/4" x 3/4" pan head screws and lock washers.



Determine desired position for your specific computer and attach to DMM swivel plate using 1/4"x 3/4" carriage bolts, PVC spacer, nylon washers, steel washers, and nylock nuts. Tighten so that the dock rotates smoothly.



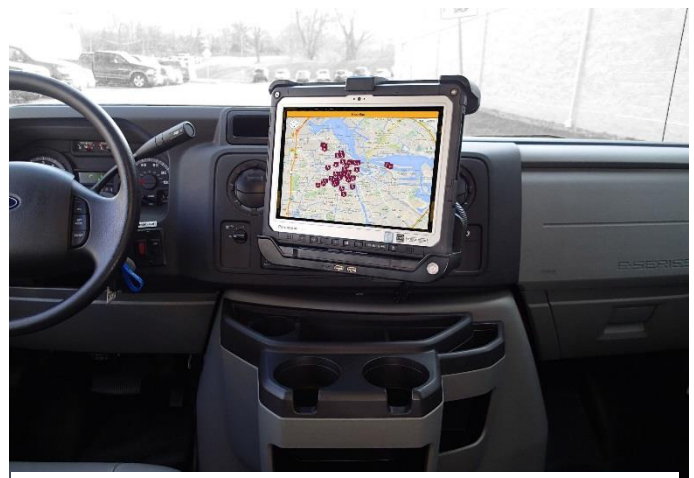
Route wiring along the side of the DMM flip up frame using wire ties and existing holes. Test up / down and side to side motion to confirm wires have adequate slack and strain relief.



Position VESA plate on back of Device as desired. Attach VESA plate with carriage bolts to the back of the dock. The gray PVC washer will go between this bracket and the DMM swivel plate.



Check and adjust positioning as desired. Test for proper latching in closed position.



Test computer.  
Installation is now complete.  
E-450 Cutaway shown.