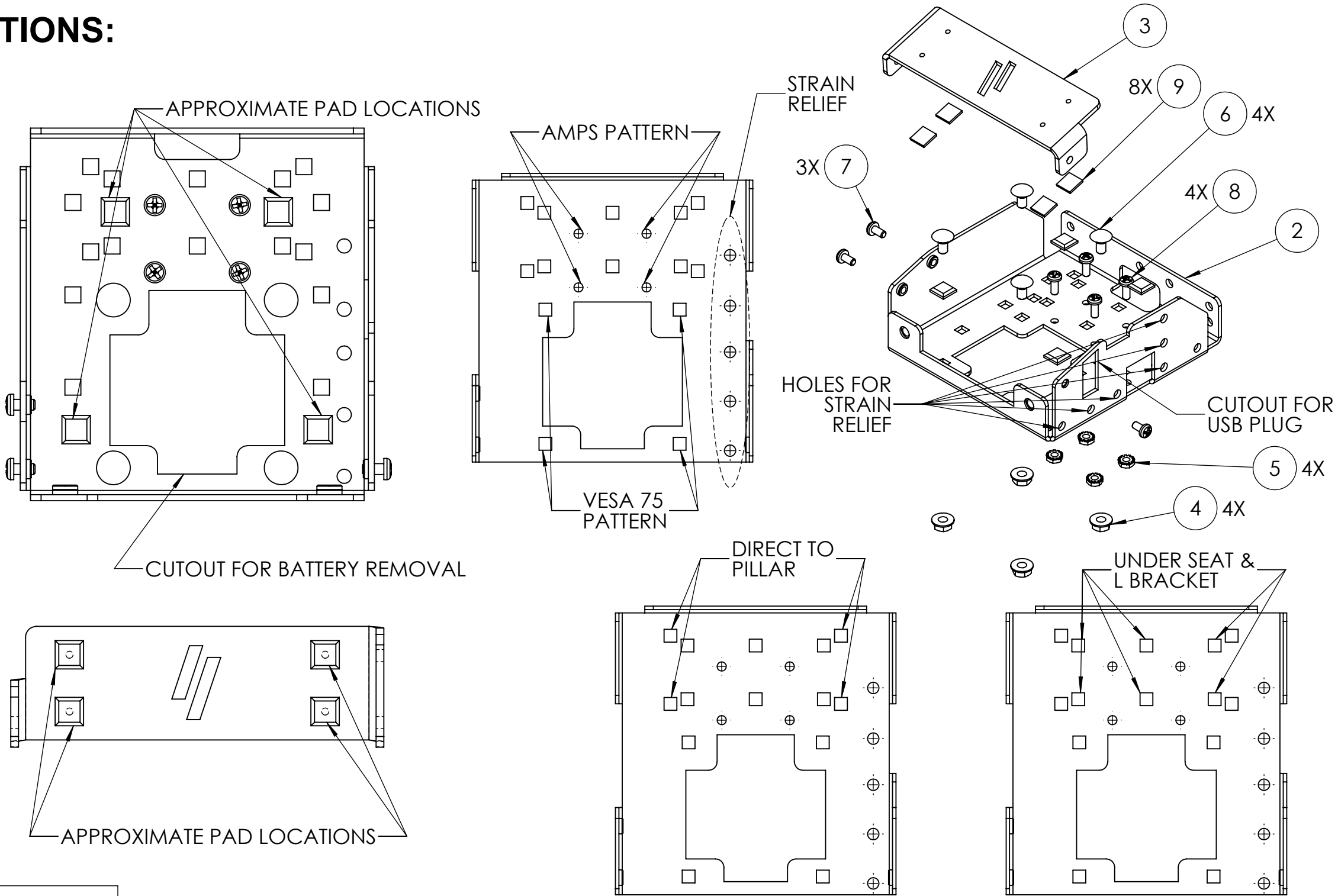


INSTALLATION INSTRUCTIONS:

1. EXPOSE ADHESIVE BACK ON 4 ⑨ PADS AND PLACE ON BASE IN SHOWN LOCATIONS. AVOID PLACING PADS ON CUTOUTS OR NEAR BOLT HEADS FOR MOUNTING.
2. EXPOSE ADHESIVE BACK ON 4 REMAINING PADS AND PLACE ON TOP BRACKET IN SHOWN LOCATIONS. PLACE PADS CENTERED ON HOLE CUTOUTS. NOTE THAT THE PADS ARE ADHERED TO THE SIDE WITH THE FLANGES FACING INWARD.
3. INSTALL DESIRED MOUNTING HARDWARE WITH SCREW HEAD UNDERNEATH PRINTER.
4. MOUNT THE BASE TO THE DESIRED PRODUCT.
5. IF STRAIN RELIEF OF CABLES IS DESIRED, INSERT CABLE TIES INTO DESIRED HOLES.
6. INSERT THE PRINTER ON THE BASE. IF THE USB PLUG IS USED, THEN REMOVE THE PRINTER'S RUBBER PLUG AND INSERT IT THROUGH THE SIDE CUTOUT BEFORE FULLY SEATING THE PRINTER.
7. ATTACH THE TOP BRACKET WITH 3X ⑦ 10-32X3/8" SCREWS.



LINE	QTY.	ITEM NUMBER	DESCRIPTION
1	1	24034	INSTRUCTIONS, BROTHER FORKLIFT MOUNT
2	1	24407	BKT, BASE, BROTHER MOUNT
3	1	24408	BRACKET, TOP, BROTHER FORKLIFT MOUNT
4	4	16013	NUT 1/4-20 HEX FLANGE SERRATED ZP, BLK
5	4	16017	NUT 10-32 KEPS ZP, BLK
6	4	16222	BOLT 1/4-20 X 1/2 CARRIAGE ZP BLK
7	3	16398	SCREW 10-32 X 3/8 PPHMS ZP
8	4	16399	SCREW, 10-32 X 1/2 PPHMS, ZP
9	8	20346	RUBBER FEET W/ PSA

C-PM-128 INSTRUCTIONS

WARNING: ALL HAVIS INC. PRODUCTS ARE DESIGNED WITH SAFETY OF USE AND INSTALLATION IN MIND. HOWEVER, IT IS THE SOLE RESPONSIBILITY OF THE OWNER/OPERATOR OF A VEHICLE USING HAVIS INC. MOUNTING AND DOCKING EQUIPMENT, TO INSURE THAT THE EQUIPMENT IS INSTALLED SO THAT IT WILL NOT INTERFERE WITH VEHICLE OPERATION, INTERFERE WITH SAFETY DEVICES, OBSTRUCT VIEW OF DRIVING CONDITIONS, OR IN ANY WAY DEGRADE OCCUPANT SAFETY. IMPROPER INSTALLATION CAN CAUSE SERIOUS INJURY IN THE EVENT OF AN ACCIDENT. INSTALLATION SHOULD ONLY BE PERFORMED BY QUALIFIED PROFESSIONALS. COMPUTERS AND MOTION DEVICES MUST BE MOVED TO AND STOWED/SECURED IN THEIR SAFE DRIVING POSITIONS BEFORE OPERATING VEHICLE.

DRAWING NO.
10-011294

PRODUCT DESCRIPTION
C-PM-128 INSTRUCTION SHEET

HAVIS
1-800-524-9900
WWW.HAVIS.COM

REV. DATE
1-3-2022

INSTALLATION INSTRUCTIONS:

- 1. REFER TO STEPS 1 & 2 ON C-PM-128 SHEET FOR PAD INSTALL.
- 2. EXPOSE ADHESIVE BACK

ON 2X 5 LARGE PADS AND PLACE AT END OF L BRACKET AS SHOWN IN VIEW ON SHEET.

3. ATTACH PRINTER BRACKET TO

L BRACKET WITH 4X 9 1/4-20X1/2" CARRIAGE BOLTS AND 4X 6 NUTS. NOTE THAT THE

PRINTER CAN FACE IN 4 DIRECTIONS - 2 DIRECTIONS SHOWN HERE. PRINTER CAN ALSO BE MOUNTED AT SEVERAL DISTANCES FROM THE SEAT.

4. ATTACH L BRACKET TO UNDER SEAT MOUNT WITH

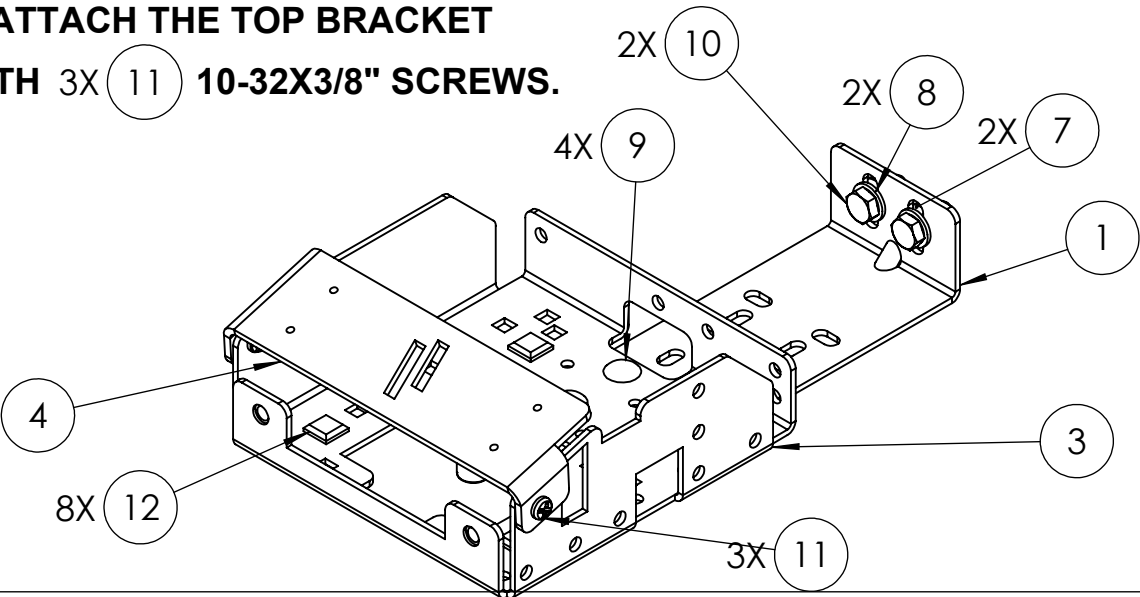
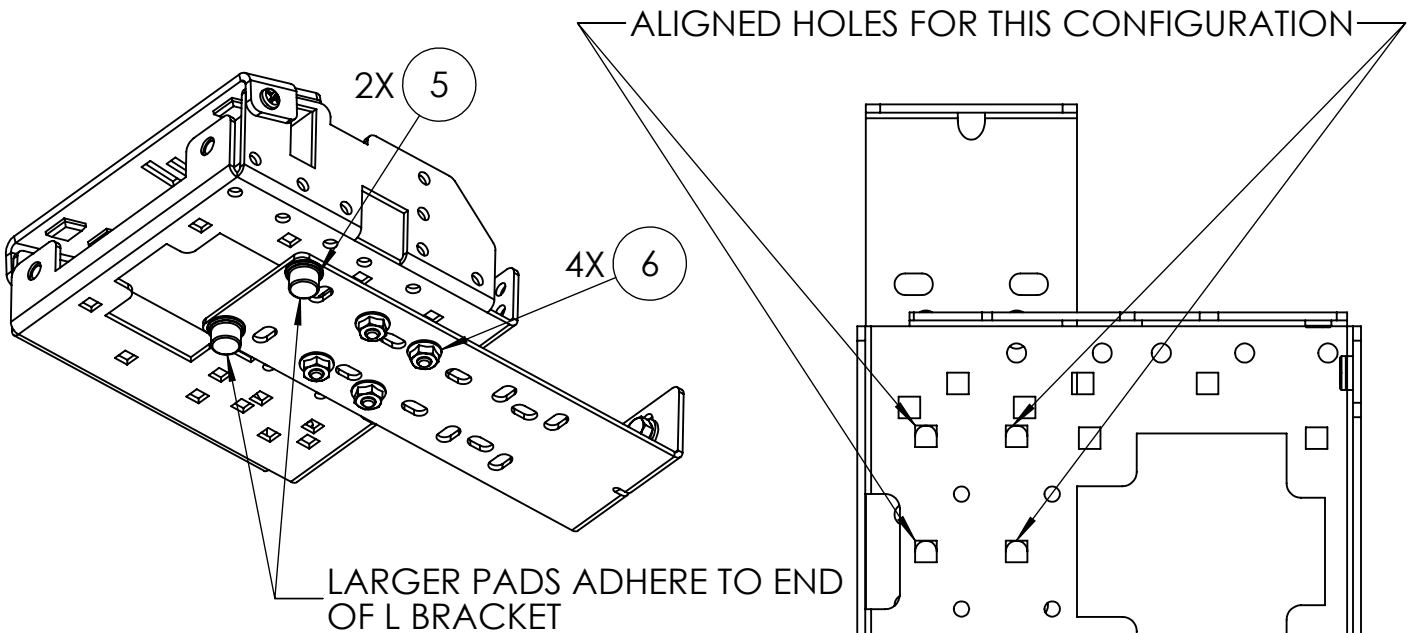
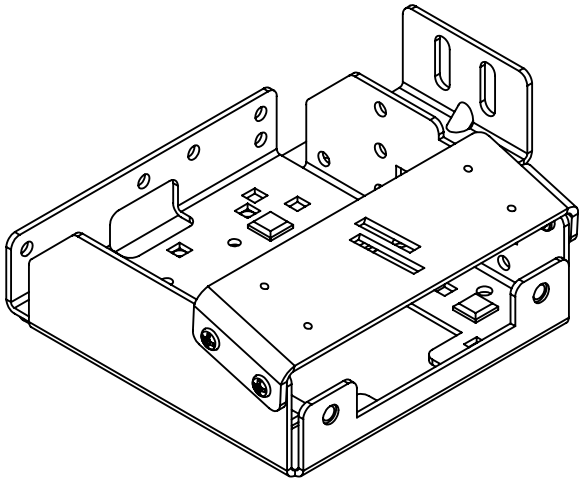
2X 10 5/16-18X3/4" BOLTS,

2X 8 WASHERS, AND 2X 7 NUTS.

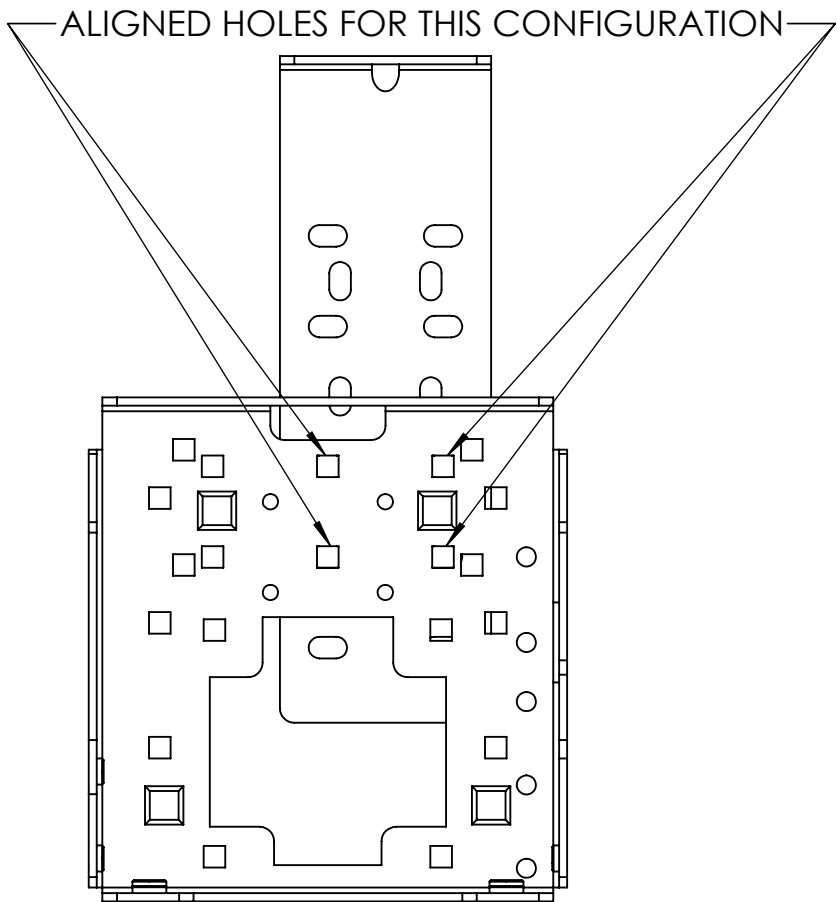
5. IF STRAIN RELIEF OF CABLES IS DESIRED, INSERT CABLE TIES INTO DESIRED HOLES.

6. INSERT THE PRINTER ON THE BASE. IF THE USB PLUG IS USED, THEN REMOVE THE PRINTER'S RUBBER PLUG AND INSERT IT THROUGH THE SIDE CUTOUT BEFORE FULLY SEATING THE PRINTER.

7. ATTACH THE TOP BRACKET WITH 3X 11 10-32X3/8" SCREWS.



LINE	QTY.	ITEM NUMBER	DESCRIPTION
1	1	22908	BRKT, RUGGEDJET 4200 UNDER SEAT
2	1	24034	INSTRUCTIONS, BROTHER FORKLIFT MOUNT
3	1	22407	BKT, BASE, BROTHER MOUNT
4	1	22408	BRACKET, TOP, BROTHER FORKLIFT MOUNT
5	2	15985	BUMPER 21/32" OD 13/32" HIGH BLACK ADHESIVE BACKED
6	4	16013	NUT 1/4-20 HEX FLANGE SERRATED ZP, BLK
7	2	16014	NUT 5/16-18 HEX FLANGE SERRATED ZINC, BLK
8	2	16123	WASHER, 5/16" FLAT, SAE ZP
9	4	16222	BOLT 1/4-20 X 1/2 CARRIAGE ZP BLK
10	2	16335	SCREW, 5/16-18 X 3/4"
11	3	16398	SCREW 10-32 X 3/8 PPHMS ZP
12	8	20346	RUBBER FEET W/ PSA



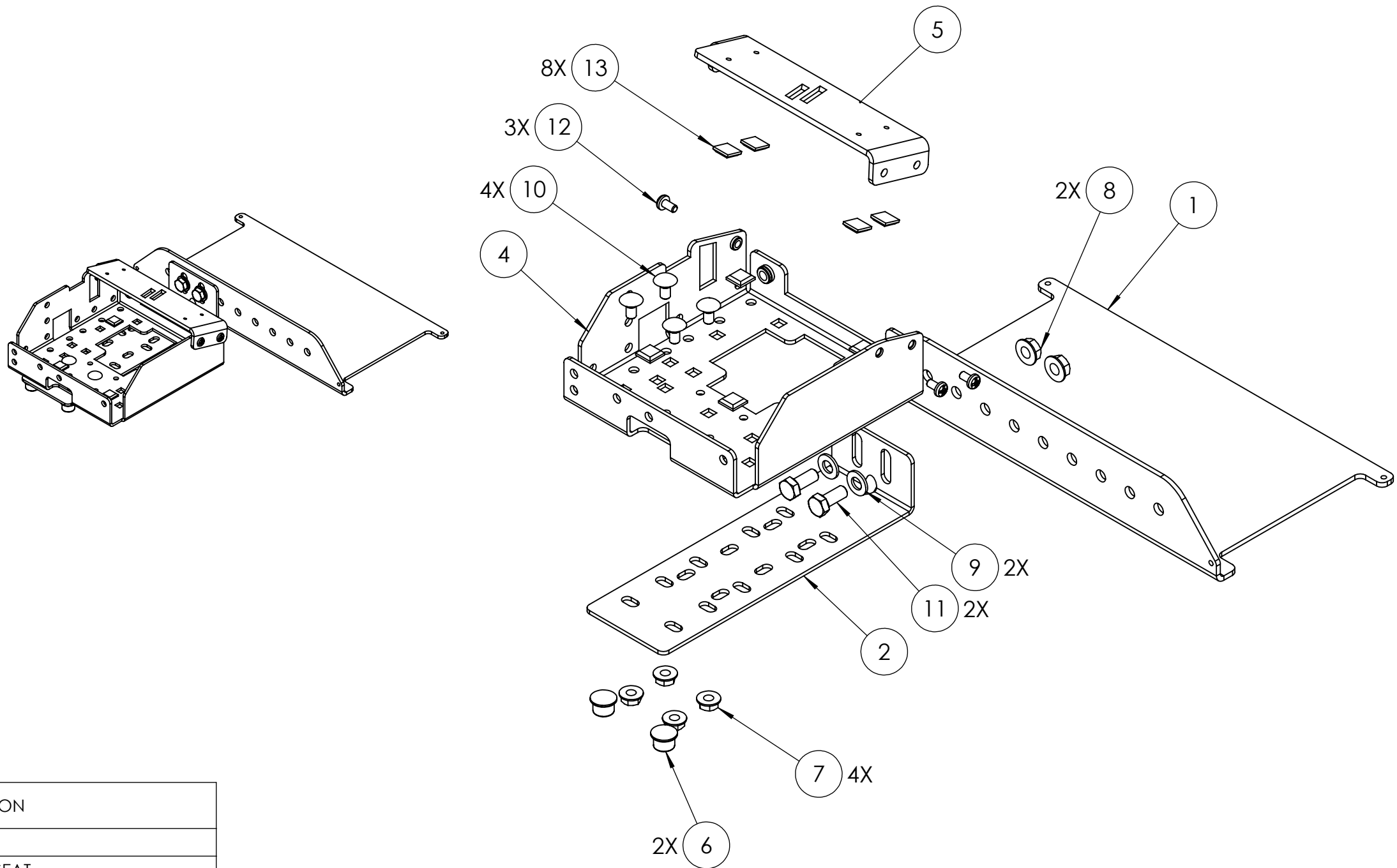
CM011193 INSTRUCTIONS

WARNING: ALL HAVIS INC. PRODUCTS ARE DESIGNED WITH SAFETY OF USE AND INSTALLATION IN MIND. HOWEVER, IT IS THE SOLE RESPONSIBILITY OF THE OWNER/OPERATOR OF A VEHICLE USING HAVIS INC. MOUNTING AND DOCKING EQUIPMENT, TO INSURE THAT THE EQUIPMENT IS INSTALLED SO THAT IT WILL NOT INTERFERE WITH VEHICLE OPERATION, INTERFERE WITH SAFETY DEVICES, OBSTRUCT VIEW OF DRIVING CONDITIONS, OR IN ANY WAY DEGRADE OCCUPANT SAFETY. IMPROPER INSTALLATION CAN CAUSE SERIOUS INJURY IN THE EVENT OF AN ACCIDENT. INSTALLATION SHOULD ONLY BE PERFORMED BY QUALIFIED PROFESSIONALS. COMPUTERS AND MOTION DEVICES MUST BE MOVED TO AND STOWED/SECURED IN THEIR SAFE DRIVING POSITIONS BEFORE OPERATING VEHICLE.

DRAWING NO. 10-011294	
PRODUCT DESCRIPTION C-PM-128 INSTRUCTION SHEET	
 1-800-524-9900 WWW.HAVIS.COM	REV. DATE 1-3-2022

INSTALLATION INSTRUCTIONS:

- 1. LIFT THE SEAT AND ENGINE COVER.
- 2. LOCATE HARDWARE FOR SEAT RAIL. LOOSEN THE HARDWARE ON THE SIDE YOU ARE NOT MOUNTING THE PRINTER MOUNT AND FULLY REMOVE THE SIDE YOU ARE.
- 3. LIFT SEAT BASE OFF OF ENGINE COVER.
- 4. SLIDE BASE UNDER THE SEAT RAIL. TIGHTEN ALL SEAT HARDWARE AND CLOSE ENGINE COVER.
- 5. FOLLOW STEPS ON SHEET FOR CM011193, UNDER SEAT MOUNT ADD-ON ONLY.



LINE	QTY.	ITEM NUMBER	DESCRIPTION
1	1	12973	BRKT, FORKLIFT, FAM BASE
2	1	22908	BRKT, RUGGEDJET 4200 UNDER SEAT
3	1	24034	INSTRUCTIONS, BROTHER FORKLIFT MOUNT
4	1	24407	BKT, BASE, BROTHER MOUNT
5	1	24408	BRACKET, TOP, BROTHER FORKLIFT MOUNT
6	2	15985	BUMPER 21/32" OD 13/32" HIGH BLACK ADHESIVE BACKED
7	4	16013	NUT 1/4-20 HEX FLANGE SERRATED ZP, BLK
8	2	16014	NUT 5/16-18 HEX FLANGE SERRATED ZINC, BLK
9	2	16123	WASHER, 5/16" FLAT, SAE ZP
10	4	16222	BOLT 1/4-20 X 1/2 CARRIAGE ZP BLK
11	2	16335	SCREW, 5/16-18 X 3/4"
12	3	16398	SCREW 10-32 X 3/8 PPHMS ZP
13	8	20346	RUBBER FEET W/ PSA

MH-3003 INSTRUCTIONS

WARNING: ALL HAVIS INC. PRODUCTS ARE DESIGNED WITH SAFETY OF USE AND INSTALLATION IN MIND. HOWEVER, IT IS THE SOLE RESPONSIBILITY OF THE OWNER/OPERATOR OF A VEHICLE USING HAVIS INC. MOUNTING AND DOCKING EQUIPMENT, TO INSURE THAT THE EQUIPMENT IS INSTALLED SO THAT IT WILL NOT INTERFERE WITH VEHICLE OPERATION, INTERFERE WITH SAFETY DEVICES, OBSTRUCT VIEW OF DRIVING CONDITIONS, OR IN ANY WAY DEGRADE OCCUPANT SAFETY. IMPROPER INSTALLATION CAN CAUSE SERIOUS INJURY IN THE EVENT OF AN ACCIDENT. INSTALLATION SHOULD ONLY BE PERFORMED BY QUALIFIED PROFESSIONALS. COMPUTERS AND MOTION DEVICES MUST BE MOVED TO AND STOWED/SECURED IN THEIR SAFE DRIVING POSITIONS BEFORE OPERATING VEHICLE.

DRAWING NO.
10-011294

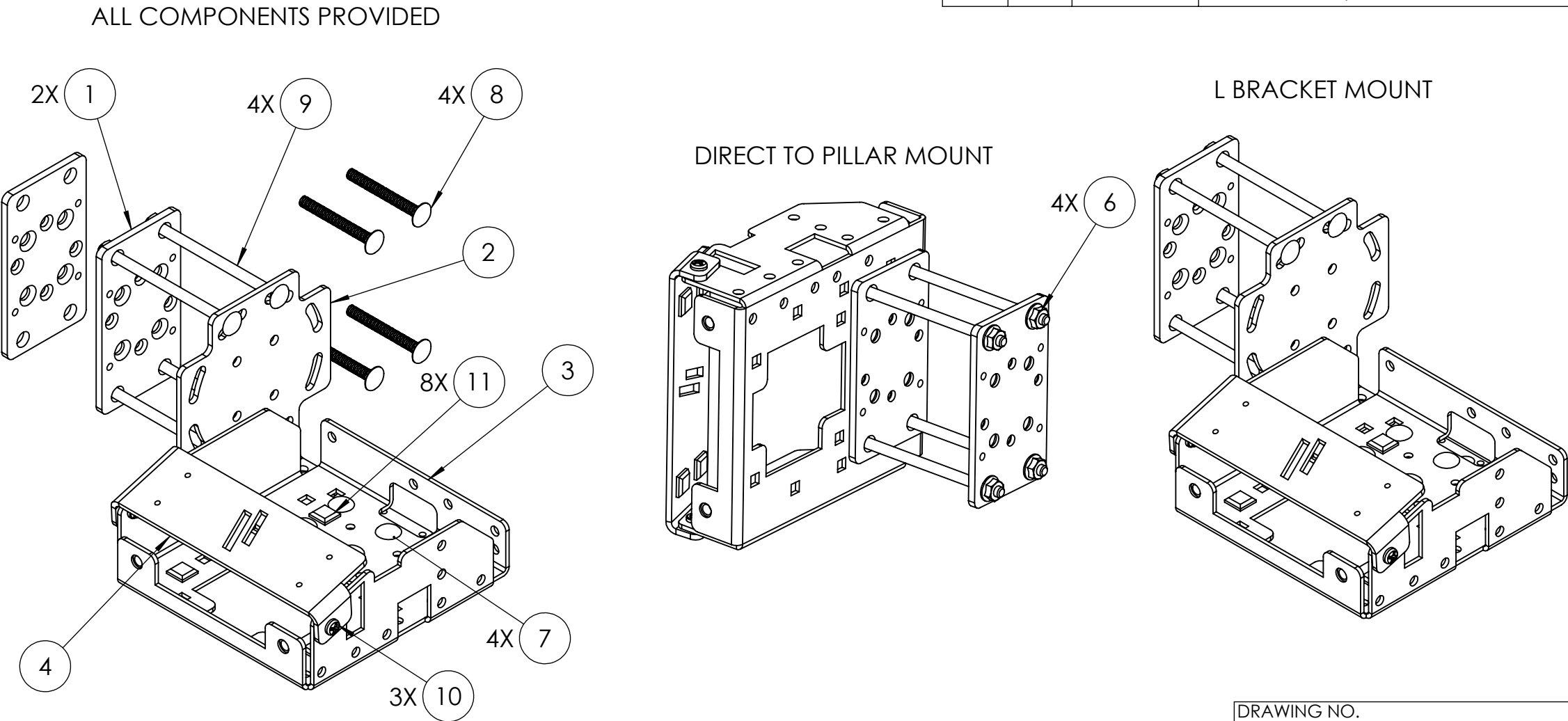
PRODUCT DESCRIPTION
C-PM-128 INSTRUCTION SHEET

1-800-524-9900
WWW.HAVIS.COM

REV. DATE
1-3-2022

INSTALLATION INSTRUCTIONS:

1. REFER TO STEPS 1 & 2 ON C-PM-128 SHEET FOR PAD INSTALL.
2. THE PRINTER MOUNT CAN BE INSTALLED IN NUMEROUS ORIENTATIONS BOTH DIRECTLY ONTO THE PILLAR AND ONTO THE PROVIDED L BRACKET. PLEASE FIRST CONSIDER THE IDEAL LOCATION, SPACING, AND ORIENTATION BEFORE MOUNTING.
3. FOUR 1/4-20 X 2-1/4" AND FOUR 1/4-20 X 4" BOLTS HAVE BEEN PROVIDED. USE THE APPROPRIATE LENGTH BOLT FOR THE PILLAR THICKNESS.
4. IF THE PRINTER MOUNT IS DIRECTLY MOUNTED TO THE PILLAR, USE BOTH 13281 PLATES. THE THICK PLATES CAN CLAMP TIGHTER TO THE PILLAR. THE PRINTER MOUNT SHOULD NOT BE USED FOR CLAMPING DIRECTLY TO THE PILLAR. ATTACH THE TWO PLATES AND PRINTER MOUNT BEFORE INSTALLING THE PRINTER.
5. IF THE PRINTER MOUNT IS MOUNTED TO THE L BRACKET, THE L BRACKET SHOULD BE ATTACHED TO THE PILLAR BEFORE THE PRINTER MOUNT IN ATTACHED.
6. IF STRAIN RELIEF OF CABLES IS DESIRED, INSERT CABLE TIES INTO DESIRED HOLES.
7. INSERT THE PRINTER ON THE BASE. IF THE USB PLUG IS USED, THEN REMOVE THE PRINTER'S RUBBER PLUG AND INSERT IT THROUGH THE SIDE CUTOUT BEFORE FULLY SEATING THE PRINTER.
8. ATTACH THE TOP BRACKET WITH 3X 10 10-32X3/8" SCREWS.



MH-3004 INSTRUCTIONS

WARNING: ALL HAVIS INC. PRODUCTS ARE DESIGNED WITH SAFETY OF USE AND INSTALLATION IN MIND. HOWEVER, IT IS THE SOLE RESPONSIBILITY OF THE OWNER/OPERATOR OF A VEHICLE USING HAVIS INC. MOUNTING AND DOCKING EQUIPMENT, TO INSURE THAT THE EQUIPMENT IS INSTALLED SO THAT IT WILL NOT INTERFERE WITH VEHICLE OPERATION, INTERFERE WITH SAFETY DEVICES, OBSTRUCT VIEW OF DRIVING CONDITIONS, OR IN ANY WAY DEGRADE OCCUPANT SAFETY. IMPROPER INSTALLATION CAN CAUSE SERIOUS INJURY IN THE EVENT OF AN ACCIDENT. INSTALLATION SHOULD ONLY BE PERFORMED BY QUALIFIED PROFESSIONALS. COMPUTERS AND MOTION DEVICES MUST BE MOVED TO AND STOWED/SECURED IN THEIR SAFE DRIVING POSITIONS BEFORE OPERATING VEHICLE.

LINE	QTY.	ITEM NUMBER	DESCRIPTION
1	2	13281	PLATE, ARKON FORKLIFT MOUNTING
2	1	22906	HOLDER, BARCODE SCANNER MOUNT
3	1	24407	BKT, BASE, BROTHER MOUNT
4	1	24408	BRACKET, TOP, BROTHER FORKLIFT MOUNT
5	1	24034	INSTRUCTIONS, BROTHER FORKLIFT MOUNT
6	8	16013	NUT 1/4-20 HEX FLANGE SERRATED ZP, BLK
7	4	16222	BOLT 1/4-20 X 1/2 CARRIAGE ZP BLK
8	4	16226	HRDW,SCRW,1/4-20x2-1/4 ,RHSNCS,ZINC
9	4	16234	BOLT 1/4-20 X 4 CARRIAGE ZP
10	3	16398	SCREW 10-32 X 3/8 PPHMS ZP
11	8	20346	RUBBER FEET W/ PSA

DRAWING NO.
10-011294

PRODUCT DESCRIPTION
C-PM-128 INSTRUCTION SHEET

HAVIS
1-800-524-9900
WWW.HAVIS.COM

REV. DATE
1-3-2022

INSTALLATION INSTRUCTIONS:

1. REFER TO STEPS 1 & 2 ON C-PM-128 SHEET FOR PAD INSTALL.

2. ATTACH THE MD-408 TO A 13281 PLATE WITH 4X 10 10-32X3/4" FLAT HEAD SCREWS AND NUTS WITH THE FLAT HEAD OF THE SCREW MATING TO THE COUNTERSUNK SIDE OF THE PLATE.

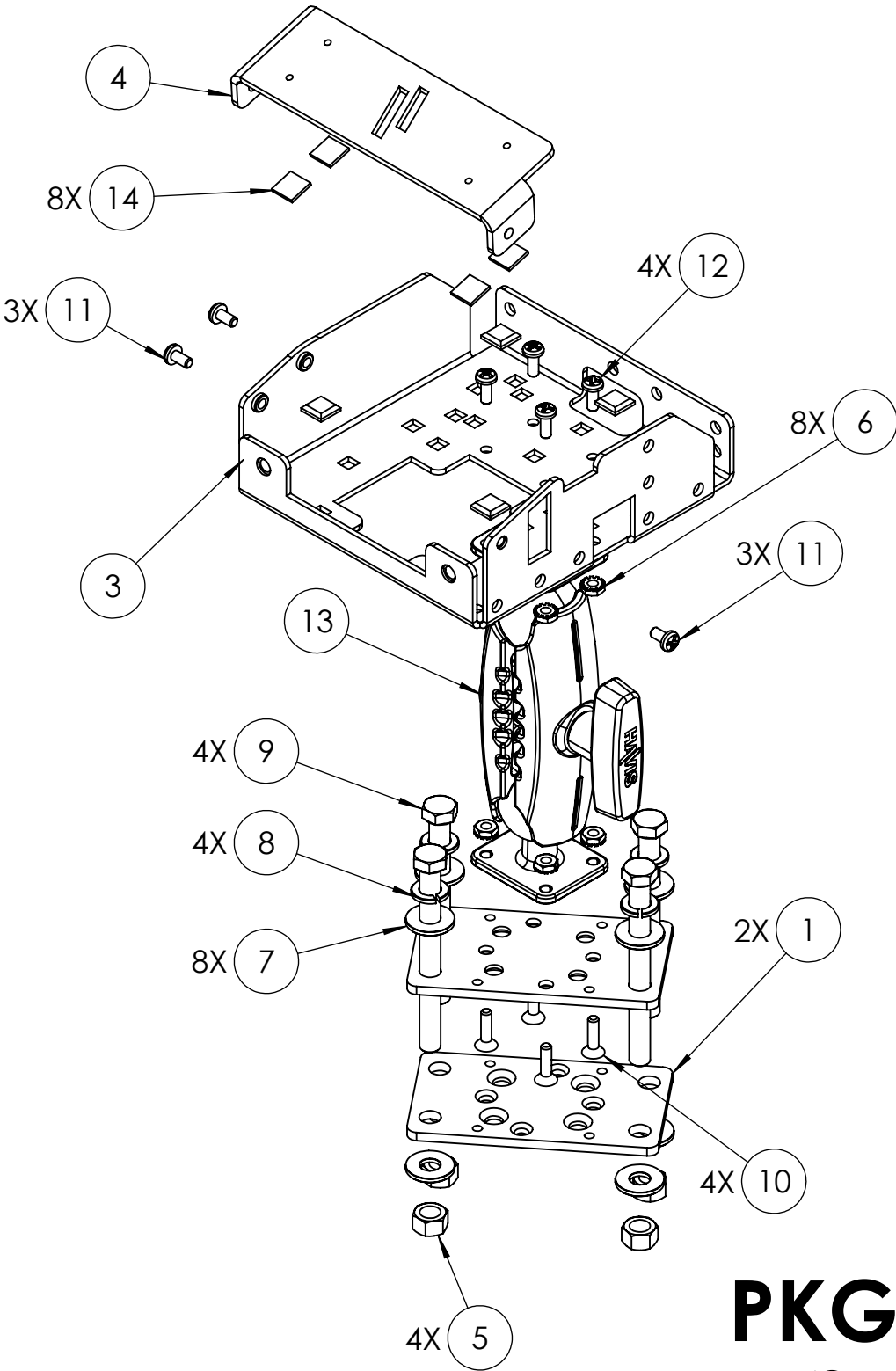
3. ATTACH THE MD-408 WITH PLATE TO THE PILLAR WITH THE SECOND 13281 PLATE, 4X 9 3/8-16X4" BOLTS, 8X 7 WASHERS, 4X 8 SPLIT RING WASHERS, AND 4X 5 NUTS.

4. ATTACH THE MD-408 TO THE PRINTER MOUNT WITH 4X 12 10-32X1/2" BUTTON HEAD SCREWS AND NUTS.

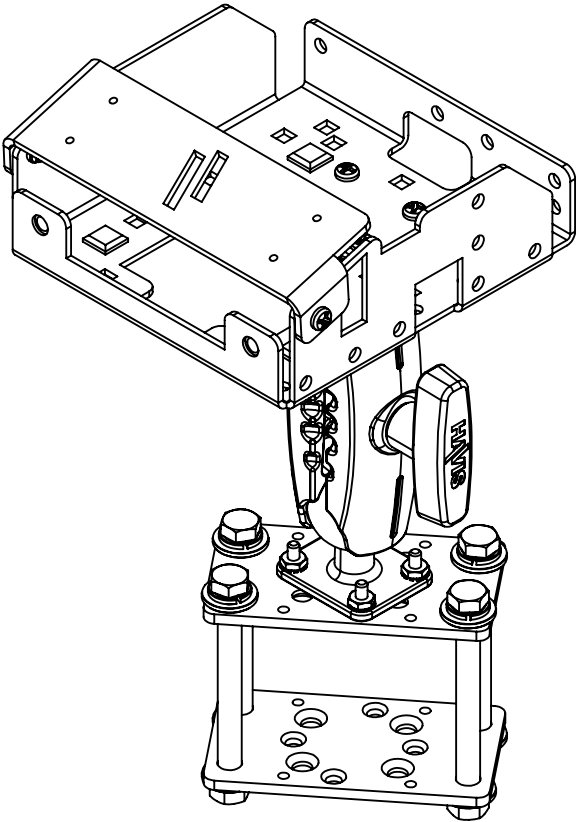
5. IF STRAIN RELIEF OF CABLES IS DESIRED, INSERT CABLE TIES INTO DESIRED HOLES.

6. INSERT THE PRINTER ON THE BASE. IF THE USB PLUG IS USED, THEN REMOVE THE PRINTER'S RUBBER PLUG AND INSERT IT THROUGH THE SIDE CUTOUT BEFORE FULLY SEATING THE PRINTER.

7. ATTACH THE TOP BRACKET WITH 3X 11 10-32X3/8" SCREWS.



LINE	QTY.	ITEM NUMBER	DESCRIPTION
1	2	13281	PLATE, ARKON FORKLIFT MOUNTING
2	1	24034	INSTRUCTIONS, BROTHER FORKLIFT MOUNT
3	1	24407	BKT, BASE, BROTHER MOUNT
4	1	22408	BRACKET, TOP, BROTHER FORKLIFT MOUNT
5	4	16001	NUT 3/8-16 HEX ZP
6	8	16017	HRDW,NUT,KEPS,10-32,ZINC,BLK,
7	8	16127	HRDW, WSHR, FLT, 3/8 USS ZP
8	4	16144	WASHER 3/8 LOCK ZP
9	4	16349	SCREW 3/8-16 X 4 HHCS ZP
10	4	16364	SCREW, #10-32 X 3/4 PFHMS ZP
11	3	16398	SCREW 10-32 X 3/8 PPHMS ZP
12	4	16399	HRDW,SCRW,10-32x1/2,PPHMS,ZINC,BLK,
13	1	19147	LIGHT DUTY PILLAR MOUNT
14	8	20346	RUBBER FEET W/ PSA



PKG-MH-3004
INSTRUCTIONS

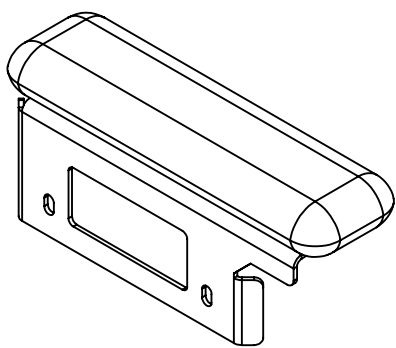
WARNING: ALL HAVIS INC. PRODUCTS ARE DESIGNED WITH SAFETY OF USE AND INSTALLATION IN MIND. HOWEVER, IT IS THE SOLE RESPONSIBILITY OF THE OWNER/OPERATOR OF A VEHICLE USING HAVIS INC. MOUNTING AND DOCKING EQUIPMENT, TO INSURE THAT THE EQUIPMENT IS INSTALLED SO THAT IT WILL NOT INTERFERE WITH VEHICLE OPERATION, INTERFERE WITH SAFETY DEVICES, OBSTRUCT VIEW OF DRIVING CONDITIONS, OR IN ANY WAY DEGRADE OCCUPANT SAFETY. IMPROPER INSTALLATION CAN CAUSE SERIOUS INJURY IN THE EVENT OF AN ACCIDENT. INSTALLATION SHOULD ONLY BE PERFORMED BY QUALIFIED PROFESSIONALS. COMPUTERS AND MOTION DEVICES MUST BE MOVED TO AND STOWED/SECURED IN THEIR SAFE DRIVING POSITIONS BEFORE OPERATING VEHICLE.

DRAWING NO. 10-011294	
PRODUCT DESCRIPTION C-PM-128 INSTRUCTION SHEET	
 1-800-524-9900 WWW.HAVIS.COM	REV. DATE 1-3-2022

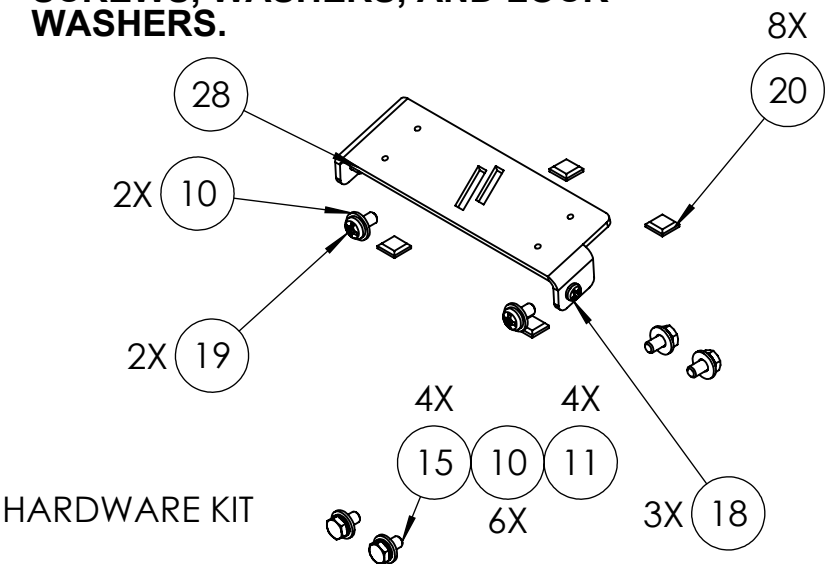
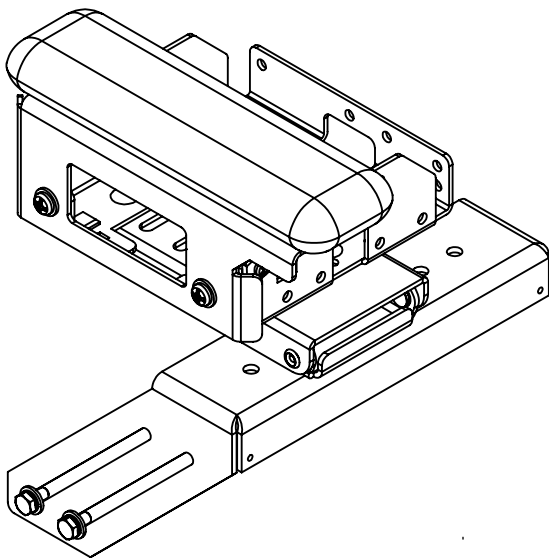
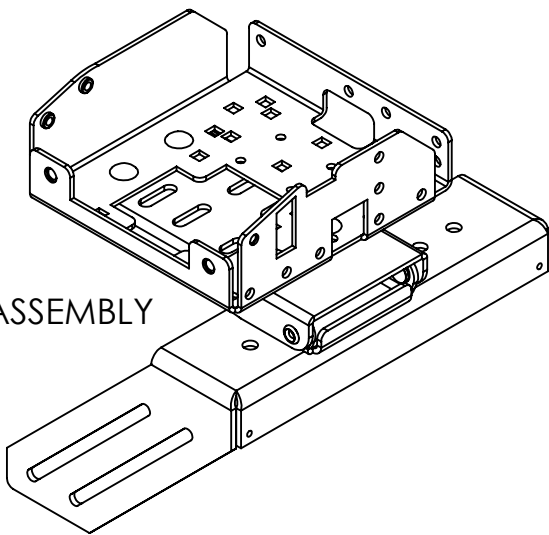
INSTALLATION INSTRUCTIONS:

1. REFER TO STEPS 1 & 2 ON C-PM-128 SHEET FOR PAD INSTALL.
2. C-ARPB-139 CONTAINS TWO SUBASSEMBLIES AND A HARDWARE KIT. THE PRINTER MOUNT SUBASSEMBLY CAN BE INSTALLED WITH OR WITHOUT THE ARMPAD SUBASSEMBLY AND PRINTER INSTALLED. FOR THESE INSTRUCTIONS, THE SUBASSEMBLIES ARE ASSEMBLED THEN MOUNTED TO THE CONSOLE.
3. IF STRAIN RELIEF OF CABLES IS DESIRED, INSERT CABLE TIES INTO DESIRED HOLES.
4. INSERT THE PRINTER ON THE BASE. IF THE USB PLUG IS USED, THEN REMOVE THE PRINTER'S RUBBER PLUG AND INSERT IT THROUGH THE SIDE CUTOUT BEFORE FULLY SEATING THE PRINTER.
5. ATTACH THE TOP BRACKET WITH 3X 18 10-32X3/8" SCREWS.
6. ATTACH THE ARMPAD SUBASSEMBLY WITH 2X 19 1/4-20X1/2" SCREWS AND 2X 10 WASHERS.
7. ATTACH THE ENTIRE ASSEMBLY TO THE CONSOLE WITH FOUR 1/4-20X1/2" SCREWS, WASHERS, AND LOCK WASHERS.

ARMPAD SUBASSEMBLY



PRINTER MOUNT SUBASSEMBLY



WARNING: ALL HAVIS INC. PRODUCTS ARE DESIGNED WITH SAFETY OF USE AND INSTALLATION IN MIND. HOWEVER, IT IS THE SOLE RESPONSIBILITY OF THE OWNER/OPERATOR OF A VEHICLE USING HAVIS INC. MOUNTING AND DOCKING EQUIPMENT, TO INSURE THAT THE EQUIPMENT IS INSTALLED SO THAT IT WILL NOT INTERFERE WITH VEHICLE OPERATION, INTERFERE WITH SAFETY DEVICES, OBSTRUCT VIEW OF DRIVING CONDITIONS, OR IN ANY WAY DEGRADE OCCUPANT SAFETY. IMPROPER INSTALLATION CAN CAUSE SERIOUS INJURY IN THE EVENT OF AN ACCIDENT. INSTALLATION SHOULD ONLY BE PERFORMED BY QUALIFIED PROFESSIONALS. COMPUTERS AND MOTION DEVICES MUST BE MOVED TO AND STOWED/SECURED IN THEIR SAFE DRIVING POSITIONS BEFORE OPERATING VEHICLE.

LINE	QTY.	ITEM NUMBER	DESCRIPTION
1	1	11356	BRACKET, MOUNT, ARMREST BASE, CONS
2	1	13659	SMALL ARMREST ASSEMBLY
3	2	13691	RUBBER BUMPER
4	2	15783	HRDW,BMPR, DOME,TOP,21/32DIA,21/64h,BLK,
5	1	15835	GREASE, TRIBOGEL, LUBRICANT (NOT SHOWN)
6	2	15959	Saint-Gobain F17-23793x Flanged Bushing, T050CG
7	1	15999	NUT 5/16-18 HEX ZP
8	1	16010	NUT 5/16-18 NYLOCK ZP, BLK
9	4	16013	NUT 1/4-20 HEX FLANGE SERRATED ZP, BLK
10	8	16122	WASHER, 1/4 FLAT ZP, BLACK
11	6	16142	WASHER 1/4 LOCK ZP BLK
12	2	16159	WASHER 5/16 X 1 1/2 FENDER SS
13	2	16170	WASHER, 5/16" BELLEVILLE SS
14	4	16222	BOLT 1/4-20 X 1/2 CARRIAGE ZP BLK
15	4	16325	SCREW 1/4-20 X 1/2 HHCS, BLK, ZP, GRD 5
16	2	16326	SCREW 1/4-20 x 3/4" HHCS ZP BLK
17	1	16337	SCREW 5/16-18 X 1 1/4 HHCS ZP
18	3	16398	SCREW 10-32 X 3/8 PPHMS ZP
19	2	16403	SCREW 1/4-20 X 1/2 PPHMS BLK
20	8	20346	RUBBER FEET W/ PSA
21	1	20352	ARM REST SPACER PLATE
22	1	23186	ARMREST UPPER SWIVEL, RIVETED
23	1	23708	ARMREST BASE SWIVEL, RIVETED, CLOSEOUT FLANGE
24	2	23889	RIVET, ARMREST
25	1	24034	INSTRUCTIONS, BROTHER FORKLIFT MOUNT
26	1	24406	BRKT, ARMREST ADAPTER
27	1	24407	BKT, BASE, BROTHER MOUNT
28	1	24408	BRACKET, TOP, BROTHER FORKLIFT MOUNT

C-ARPB-139 INSTRUCTIONS

DRAWING NO.
10-011294

PRODUCT DESCRIPTION
C-PM-128 INSTRUCTION SHEET

HAVIS

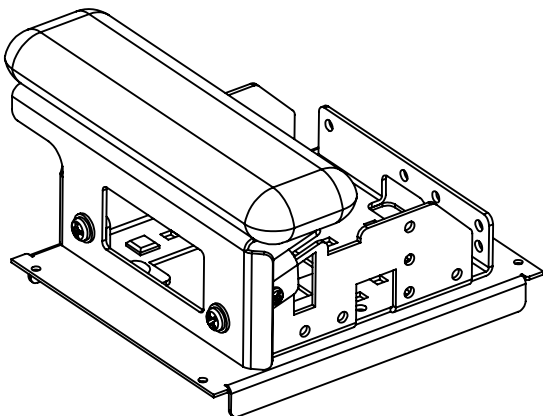
1-800-524-9900
WWW.HAVIS.COM

REV. DATE
1-3-2022

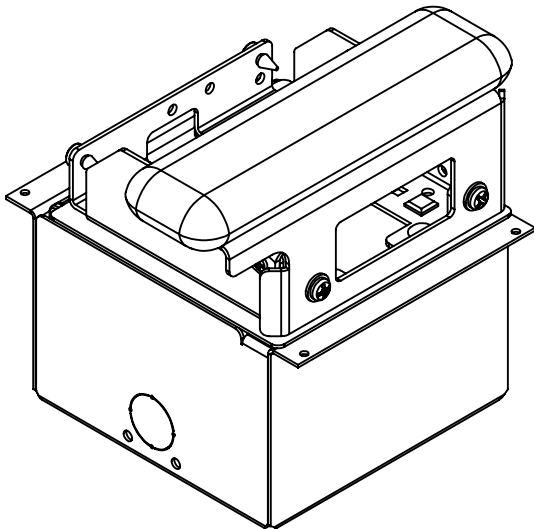
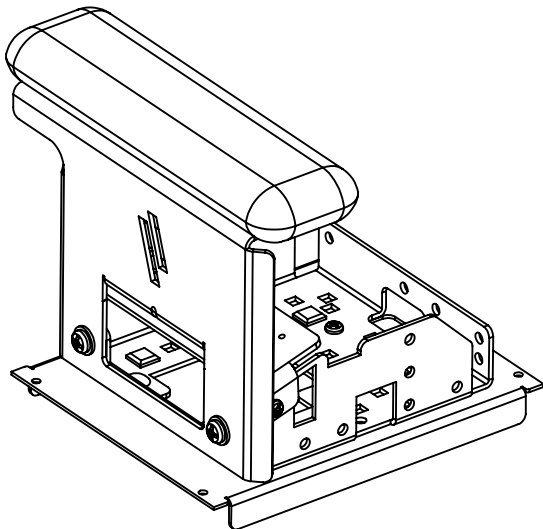
INSTALLATION INSTRUCTIONS:

1. REFER TO STEPS 1 & 2 ON C-PM-128 SHEET FOR PAD INSTALL.
2. C-ARPB-144 & C-ARPB-146 CONTAIN TWO RUBBER BUMPERS. ATTACH BUMPERS TO BACK OF PRINTER MOUNT HOLES. BUMPERS WILL MAKE CONTACT WITH CONSOLE WHEN BIN IS FULLY OPENED.
3. ATTACH PRINTER MOUNT TO FLAT BRACKET OR BIN USING FOUR 1/4-20X1/2" CARRIAGE BOLTS AND FOUR 1/4-20 NUTS. BACK OF PRINTER CUTOUT SHOULD ALIGN WITH CUTOUT IN FLAT BRACKET OR BIN LID.
4. IF STRAIN RELIEF OF CABLES IS DESIRED, INSERT CABLE TIES INTO DESIRED HOLES. CABLES CAN ROUTE THROUGH CUOUT IN FLAT BRACKET OR BIN LID.
5. INSERT THE PRINTER ON THE BASE. IF THE USB PLUG IS USED, THEN REMOVE THE PRINTER'S RUBBER PLUG AND INSERT IT THROUGH THE SIDE CUTOUT BEFORE FULLY SEATING THE PRINTER.
6. ATTACH THE TOP BRACKET WITH THREE 10-32X3/8" SCREWS.
7. ATTACH THE ARMPAD SUBASSEMBLY WITH TWO 1/4-20X1/2" SCREWS AND TWO WASHERS. FOR THE TALL ARM PADS, BEFORE FULLY TIGHTENING SCREWS, PRESS DOWN ON ARM PAD IN ORDER TO FULLY ENGAGE RUBBER BUMPERS.
8. ATTACH THE ENTIRE ASSEMBLY TO THE CONSOLE WITH FOUR TORX SCREWS.

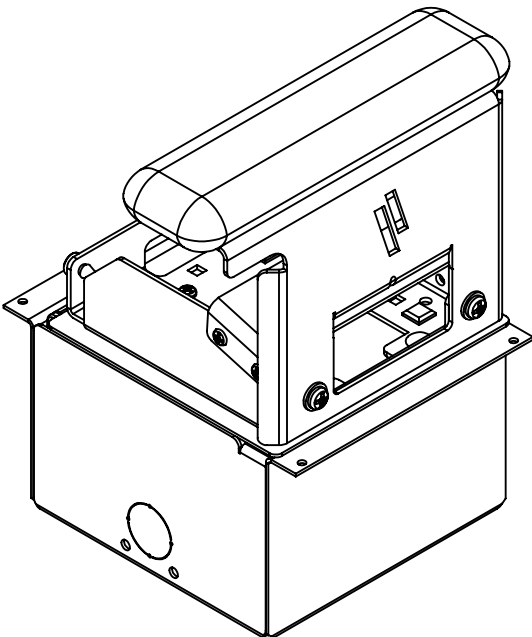
C-ARPB-140



C-ARPB-142




C-ARPB-144



C-ARPB-146

C-ARPB-140,142,144,146
INSTRUCTIONS

WARNING: ALL HAVIS INC. PRODUCTS ARE DESIGNED WITH SAFETY OF USE AND INSTALLATION IN MIND. HOWEVER, IT IS THE SOLE RESPONSIBILITY OF THE OWNER/OPERATOR OF A VEHICLE USING HAVIS INC. MOUNTING AND DOCKING EQUIPMENT, TO INSURE THAT THE EQUIPMENT IS INSTALLED SO THAT IT WILL NOT INTERFERE WITH VEHICLE OPERATION, INTERFERE WITH SAFETY DEVICES, OBSTRUCT VIEW OF DRIVING CONDITIONS, OR IN ANY WAY DEGRADE OCCUPANT SAFETY. IMPROPER INSTALLATION CAN CAUSE SERIOUS INJURY IN THE EVENT OF AN ACCIDENT. INSTALLATION SHOULD ONLY BE PERFORMED BY QUALIFIED PROFESSIONALS. COMPUTERS AND MOTION DEVICES MUST BE MOVED TO AND STOWED/SECURED IN THEIR SAFE DRIVING POSITIONS BEFORE OPERATING VEHICLE.

DRAWING NO. 10-011294	
PRODUCT DESCRIPTION C-PM-128 INSTRUCTION SHEET	
 1-800-524-9900 WWW.HAVIS.COM	REV. DATE 1-3-2022