

INSTALLATION INSTRUCTIONS

C-TTP-TAH-102

2021-2022 Chevrolet Tahoe PPV

Mounts behind Second Row Seat

**Fits with Havis standard length K9 inserts (K9-C26 and K9-C26-B)
Or Progard or Setina Rear Partitions**

***Note: Used for attaching optional C-TTP-TAH-107 or
C-TTP-TAH-108 Riser Kits for SBX-1000 series drawers.***

TOOLS REQUIRED:

Standard Socket Set

5/32" Allen Key/hex bit

T50 Torx

Metric Socket Set

PARTS and MOUNTING HARDWARE:

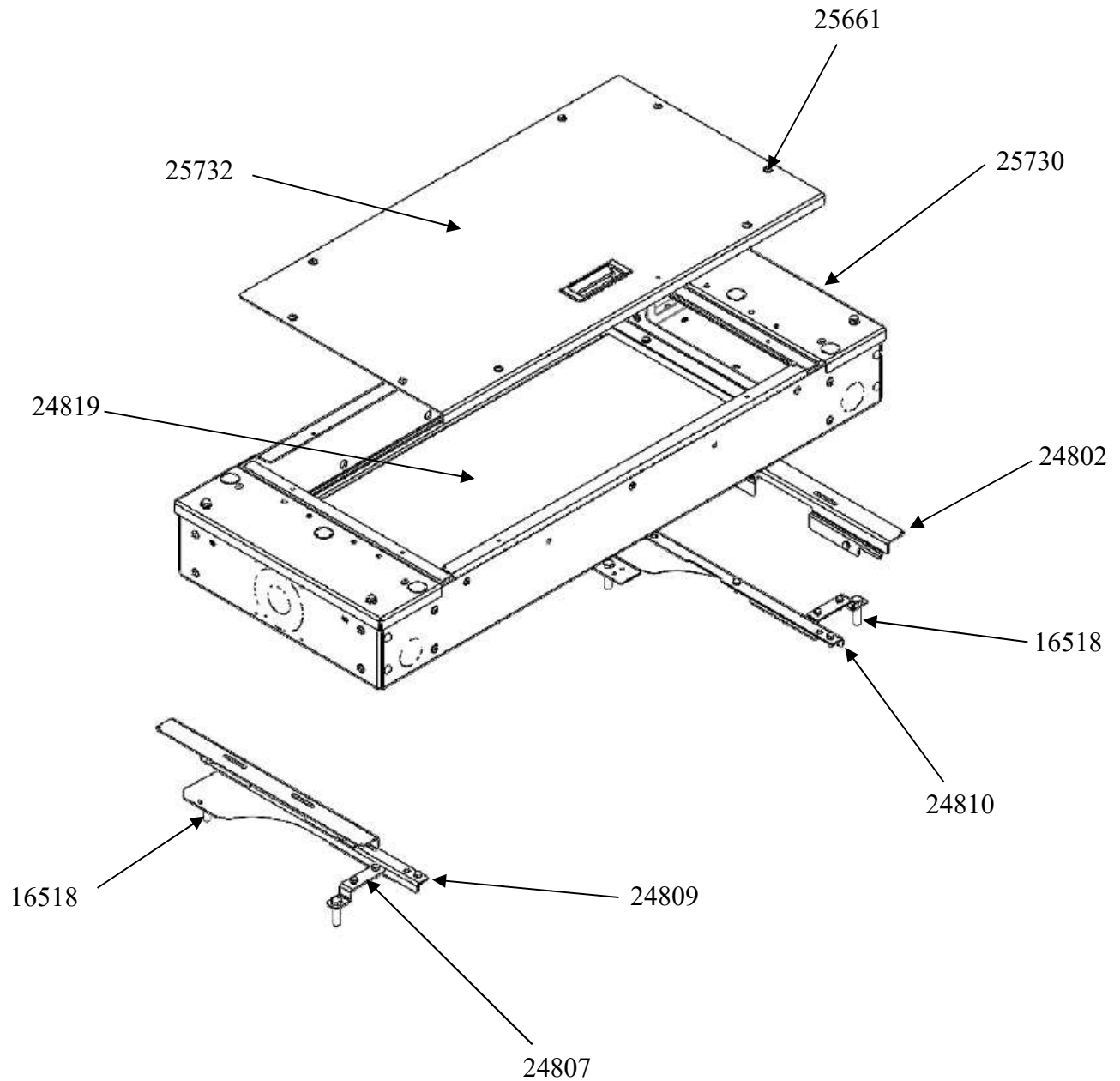
| <u>QTY</u> | <u>DESCRIPTION</u> | <u>ITEM#</u> | |
|-------------------|-------------------------------------|---------------------|----------------------|
| 1 | Main Box assembly | 25730 | |
| 1 | Lid – Full size | 25732 | |
| 2 | Rear Floor Bracket | 24807 | |
| 2 | Side top trim bracket | 24802 | |
| 1 | DS Front Floor Bracket | 24809 | |
| 1 | PS Front Floor Bracket | 24810 | |
| 2 | M10 x 1.5 x 45mm Hex Bolt | 16518 | |
| 14 | 1/4 Star washer | 16148 | |
| 14 | 1/4" x 3/4" Hex bolt | 16326 | |
| 6 | 1" Hole plug | 15803 | |
| 8 | 1/4" x 5/8" Button head screw | 25661 | |
| 1 | Equipment mounting tray (removable) | 24819 | included in main box |
| 4 | 8-32 x 1/2" Machine screw | 16378 | for removable tray |
| 4 | # 8 Flat washer | 16119 | for removable tray |

Always!

- Read all instructions before installing any Havis, Inc. products.
- Use hardware provided with install kit

**C-TTP-TAH-102
Assembly**

Front of
vehicle





Determine 3rd row seat bolt locations in forward floor and loosely attach long front brackets with supplied M10 bolts. Temporarily remove OEM M12 Torx bolts from rear seat belt mount locations (T50 Torx)



Passenger side bracket shown attached to floor with M10 x 1.5 x 45mm hex bolt.

NOTE: Remove padding under bracket and bolt for improved mounting. Repeat on driver side.



Loosely attach rear floor brackets to rear seat belt anchors on each side with previously removed OEM 12mm Torx bolts.



Place main box assembly onto brackets and attach with (10) 1/4" x 3/4" Hex bolts and star washers. Mount equipment onto removable tray as desired.



Tighten floor bracket hardware. Attach side top trim brackets with 1/4" x 3/4" Hex bolts and star washers.



Attach lid with 1/4" x 5/8" Button head screws
Installation complete.