

# INSTALLATION INSTRUCTIONS WGI-F22

## INTERIOR WINDOW GUARDS

**For 2020 -2025 FORD TRANSIT WINDOW VAN (WAGON) with  
MEDIUM ROOF, LONG LENGTH 148"INCH WHEEL BASE  
and SIDE SLIDING DOOR**

### TOOLS REQUIRED:

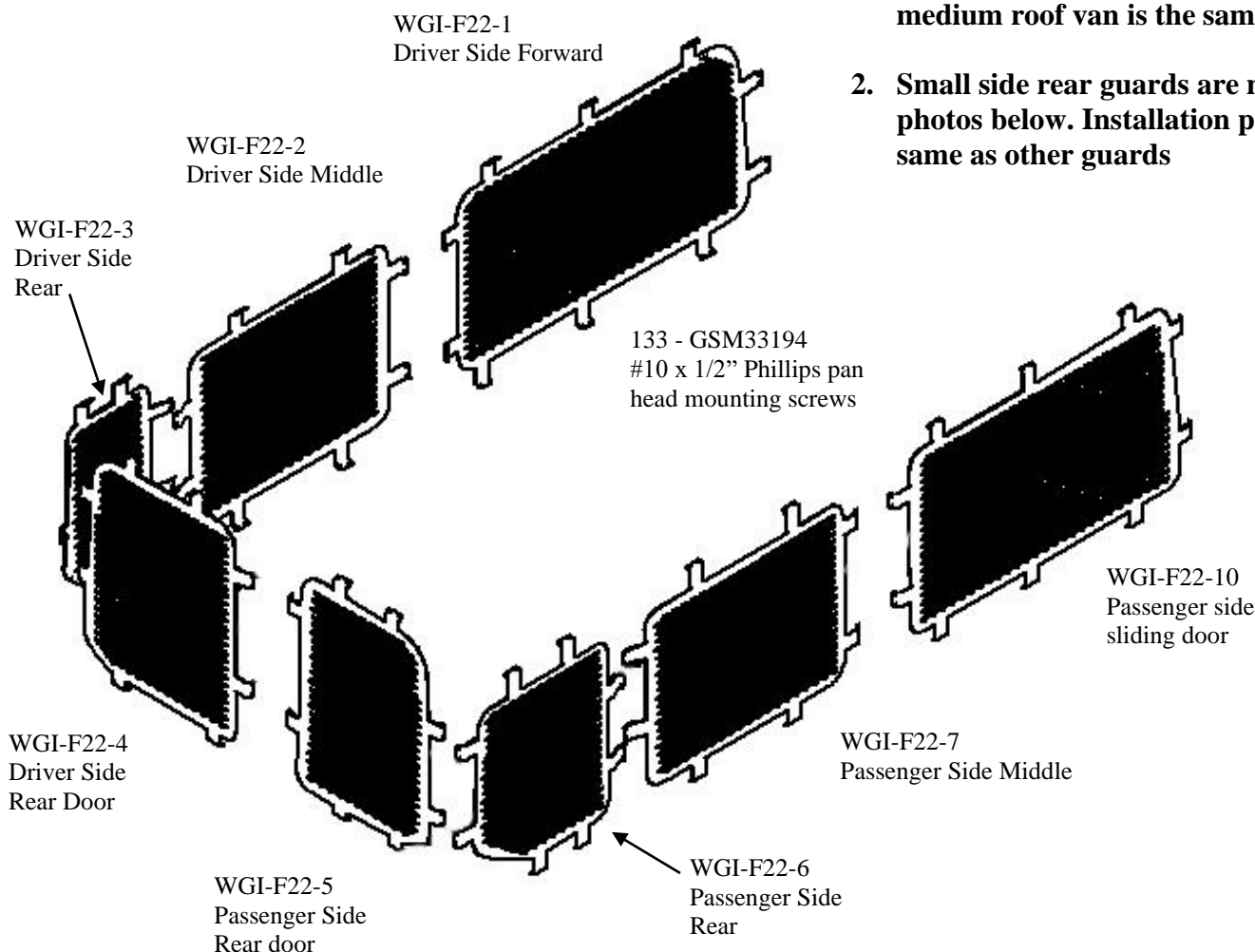
Power Drill  
1/8" Drill Bit  
Phillips Screw Driver  
Metric Socket Set

Ratcheting Wrench  
T-50 Torx Bit (for seat belts)  
Plastic Cutting Tool (utility knife or tin snips)  
Hook style and Straight pick tools

### WGI-F22 PARTS INCLUDED:

### NOTES:

1. Some photos on these instructions show a low roof van. Installation process for the medium roof van is the same.
2. Small side rear guards are not shown in photos below. Installation process is the same as other guards



### Always!

- Read all instructions before installing any Havis, Inc. products.
- Check for obstructions (Wires, brake lines, fuel tank, etc.) before drilling any holes!
- Use hardware provided with install kit



Remove the rear seats out of the van. Start by grabbing the seat release with a long hook style pick tool.



When the latch is hooked, simply pull up to release the latch.



The latch will relock itself once you let go. Use another pick tool or small screwdriver to keep the latch released while you release the other side.



When both latches are released push the seat forward to remove. The front is hooked and will need to be slid rearwards.



Carefully remove the vans interior panels including the door panels.



Removing the headliner is recommended but not required. Removing the headliner will be required if installing a Front or Middle Partition.





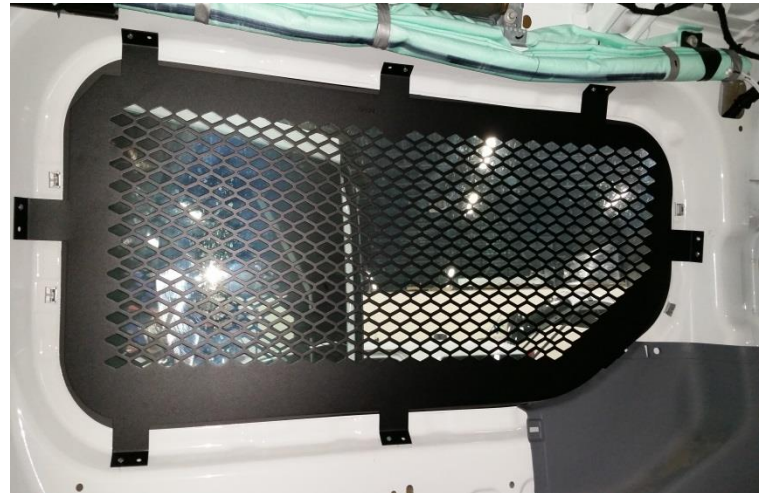
Determine location of each guard. Place guard up to the window frame, mark and pre drill mount holes with a 1/8" drill bit.  
*(Slight bending of the tabs may be necessary to ensure a proper fit)*



Follow same process for all doors



Follow same process for all doors



When hanging screens on the larger windows it is helpful to mark and pre drill only a few holes to start.

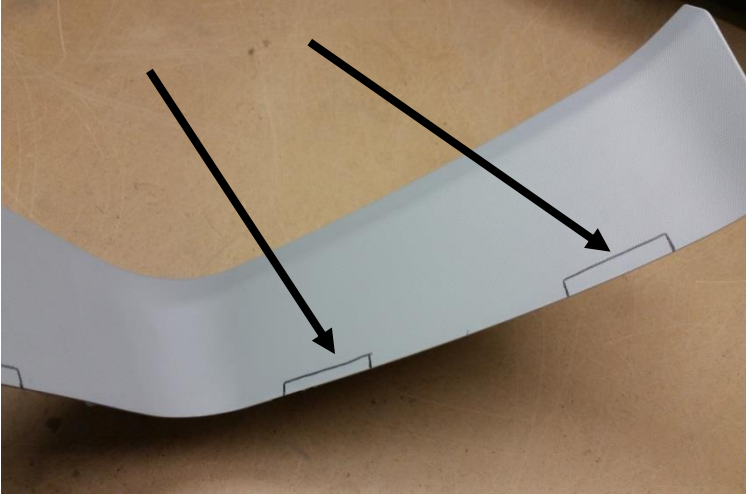


Hang the screen with only a few screws and then mark and drill the remaining mounting holes.



When all guards are hung, begin to loosely place the trim panels back on the van. Mark the trim on either side of the mounting tabs for notching.

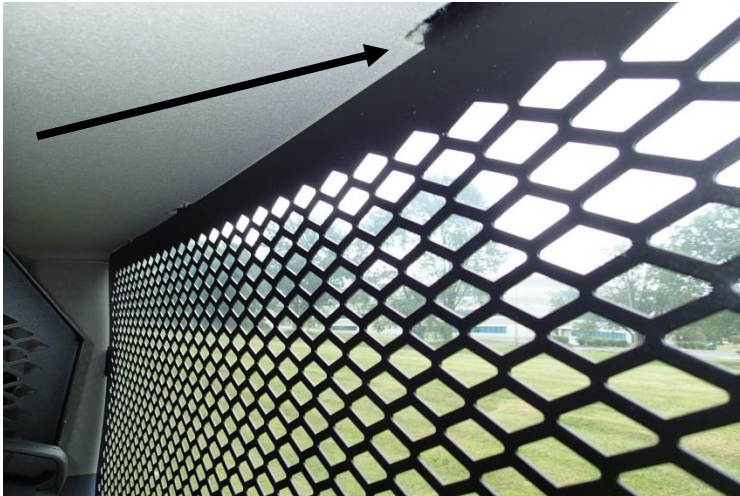




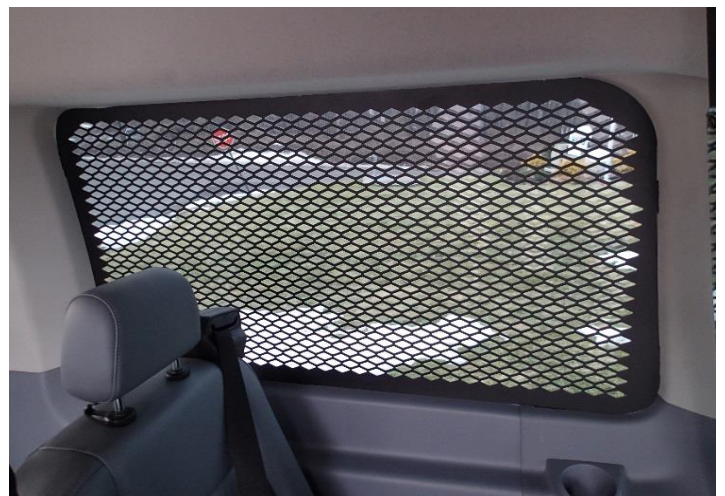
Draw a line between the points to help with maintaining a straight cut. Remove (notch) plastic from the panel as needed for mounting tab clearance.



When reinstalling the trim, additional notching may be necessary. Cut as needed.



The headliner will need to be notched around the tabs so that it sits properly above the screens.



Completed trim and headliner installation



Reinstall seats



Installation is now complete.