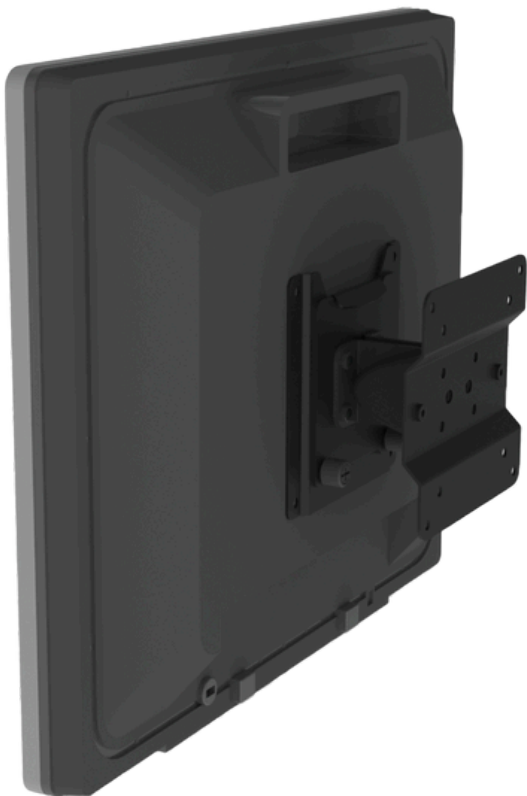




# MONITOR WALL MOUNT

## ENHANCE USER EXPERIENCE WITH THIS DURABLE WALL MOUNT FROM HAVIS

Durably designed for a range of VESA 100mm compatible monitors, this Monitor Wall Mount from Havis offers improved ergonomics and easy monitor replacement in any setting. Securely mount a range of displays up to 20lbs (9.07kg) to save space and enhance user experience.



- Monitor mount for 100mm VESA compliant monitors weighing up to 20lbs (9.07kg)
- Quick monitor release and replace feature makes switching devices easy
- Tilt range provides optimum user comfort and experience
- Durable steel construction for a robust, reliable solution
- Cable strain relief clip and monitor attachment hardware included
- Easy to install with customer-provided wall attachment hardware
- Achieve ADA compliance for vertical displays which are up to 1.25" thick

Part Number	367-4783
Shipping Dimensions W x D x H (in)	6" x 5.56" x 5.12"
Shipping Weight (lb/kg)	1.7lbs/0.77kg
Tilt Range	60° (10° up, 50° down)