

# INSTALLATION INSTRUCTIONS

## C-TTP-TAH-101

### Rear Hinged Lid Trunk Tray Storage Box

### For 2021-2022 Chevrolet Tahoe PPV

#### **TOOLS REQUIRED:**

Standard Socket Set

Drill

1/8" Drill Bit

Metric Socket Set

Phillips Screw Driver

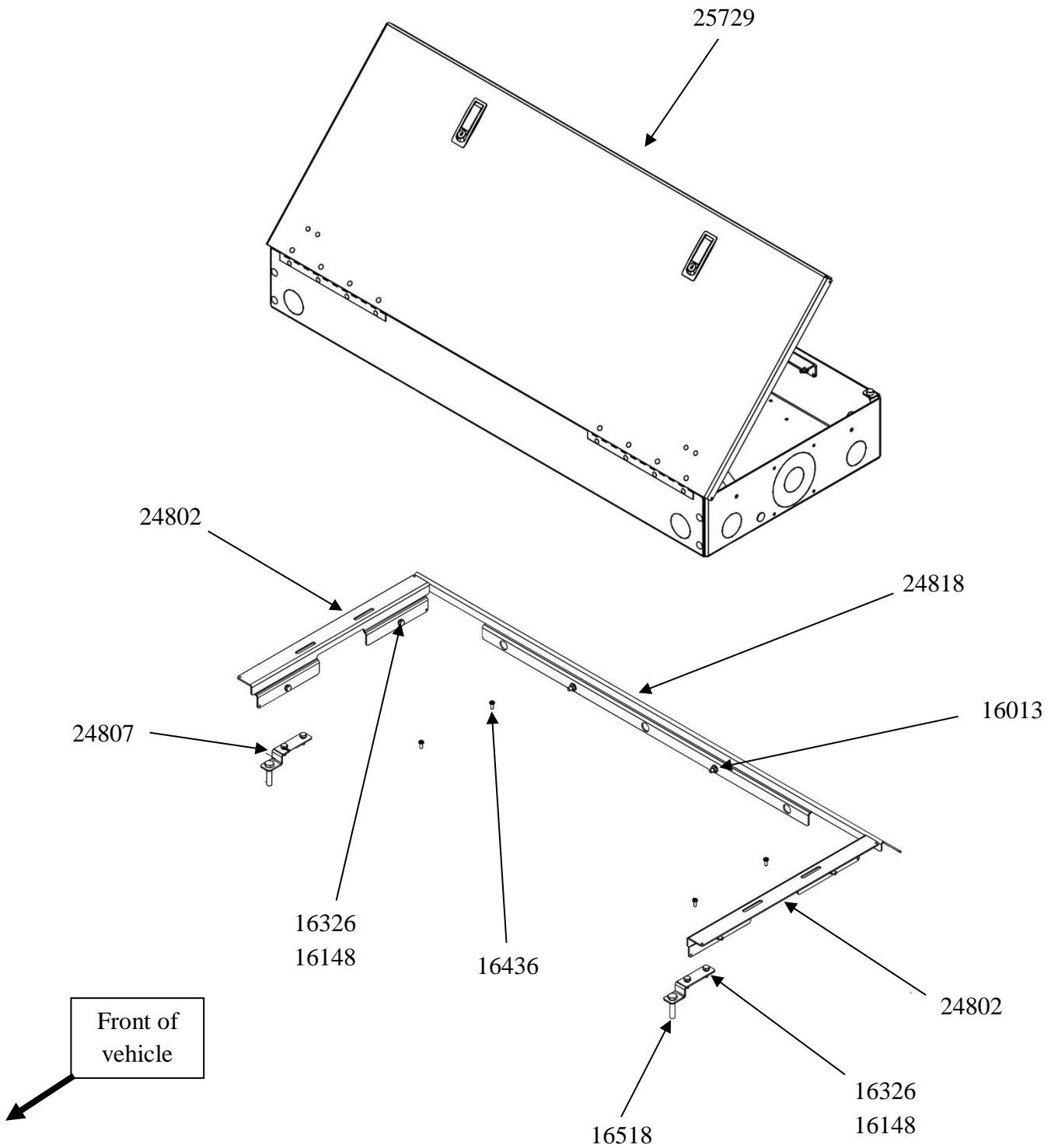
#### **PARTS and MOUNTING HARDWARE:**

<b><u>QTY</u></b>	<b><u>DESCRIPTION</u></b>	<b><u>ITEM#</u></b>
1	Main Box assembly	25729
2	Floor Bracket	24807
2	Side Trim Bracket	24802
1	Tailgate Sill Trim Plate	24818
2	1/4-20 Serrated nuts	16013
8	1/4-20 x 3/4" Hex bolt	16326
8	1/4 Star lock washer	16148
4	#10 x 1/2 Phillips sheet metal screw	16436
2	M10 x 1.5 x 45mm Hex Bolt	16518

#### **Always!**

- Read all instructions before installing any Havis, Inc. products.
- **Check for obstructions (Wires, brake lines, fuel tank, etc.) before drilling any holes!**
  - Use hardware provided with install kit

**C-TTP-TAH-101  
Assembly**





Remove OEM rear floor cover and locate existing threaded floor mount locations.



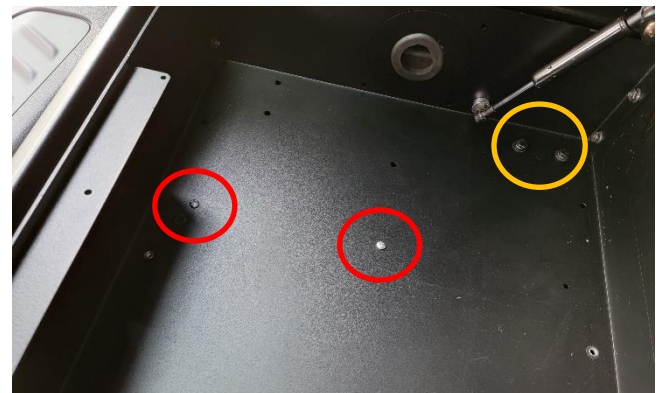
Remove OEM bolt on driver side and loosely attach storage box floor bracket to OEM threaded hole with supplied M10 x 45mm bolt.



Loosely attach storage box floor bracket to OEM threaded hole with supplied M10 x 45mm bolt.

Passenger side bracket shown.

**Note:** Threaded hole is under foil tape.



Place box into vehicle and loosely attach to floor brackets with 1/4 x 3/4" hex bolts and star washers.

**Note:** After rear and side trim parts are attached. (See next step), **carefully** drill and attach tray bottom to ribs in floor with #10 x 1/2 sheet metal screws.



Attach rear tailgate sill trim plate to studs on box with 1/4" serrated nuts. Attach side trim with 1/4 x 3/4" hex bolts and star washers.

Drill and attach screws as **noted** in previous step.



Tighten mount bracket hardware and install equipment into box as desired.

C-SBX-TAH-101 Installation complete.

C-TTP-TAH-101\_INST\_2-22