

# INSTALLATION INSTRUCTIONS

## C-DMM-3028 Flip up Dash Monitor Mount

### 2025-2026 Ford Interceptor Utility

#### TOOLS REQUIRED:

- Ratchet Wrench
- Socket Set
- 7/16" Open End Wrench
- Phillips Screwdriver (short)
- Dash panel removal tool
- Wire strippers/cutters

#### HARDWARE and PARTS shipped loose for installation:

<u>QTY</u>	<u>DESCRIPTION</u>	<u>PART#</u>
1	Main upper mounting tray	40938
1	DS mounting clamp	40939
1	PS mounting clamp	40940
2	1/4" Serrated nut	16013
2	1/4" x 1/2" Carriage bolt	16222
2	M5 x 30mm Machine screw	16553
2	1/4" plastic spacer	16732
2	8-32 x 3/4" Machine screw	16393
2	1/4" Fender washer	16130
2	#8 Star washer	16146
2	1/4" Flat washer	16122
2	1/16" Nylon Washer	13406
2	1/4-20 Nylock nut	16009
2	1/4-20 x 3/4" Carriage bolt	16223
1	PVC Spacer	22608
1	VESA 75 Swivel adaptor	22607

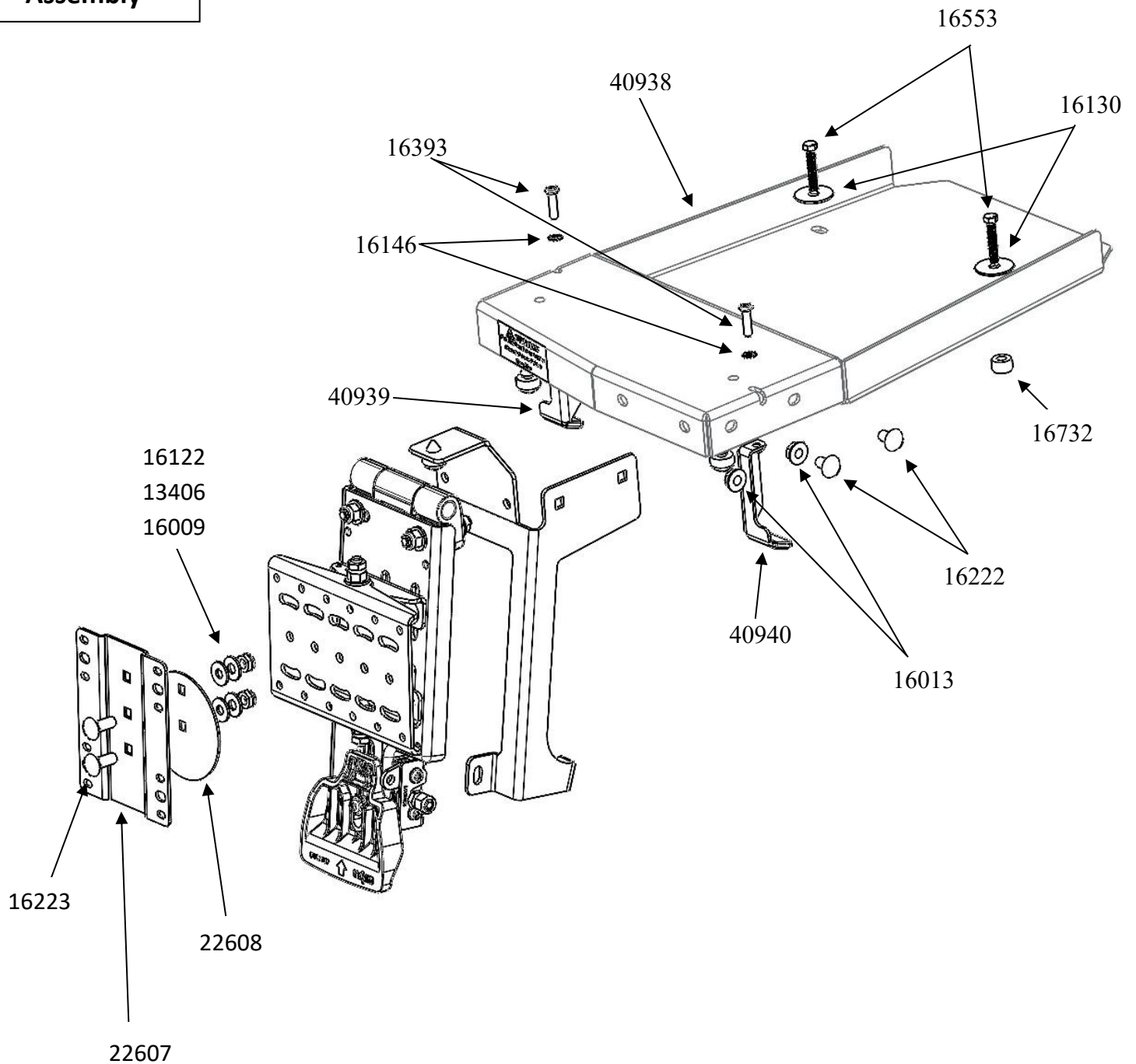
#### Notes:

*Swivel plate for mounting to a device has VESA 75 hole pattern*

#### ALWAYS!

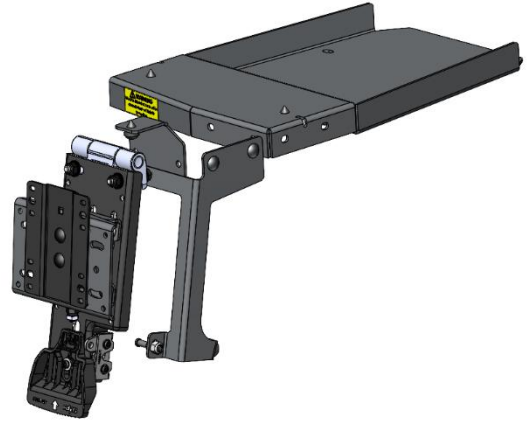
- Read all instructions before installing any Havis, Inc products.
  - Use hardware provided with install kit

**C-DMM-3028  
Assembly**

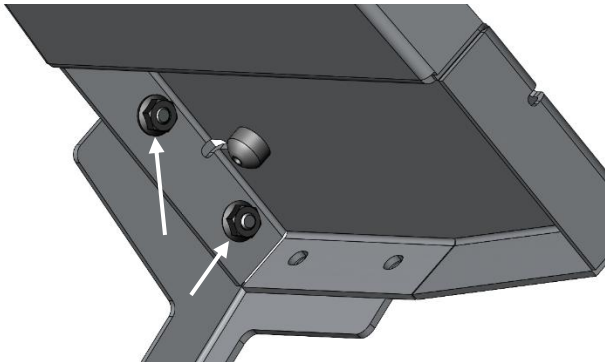




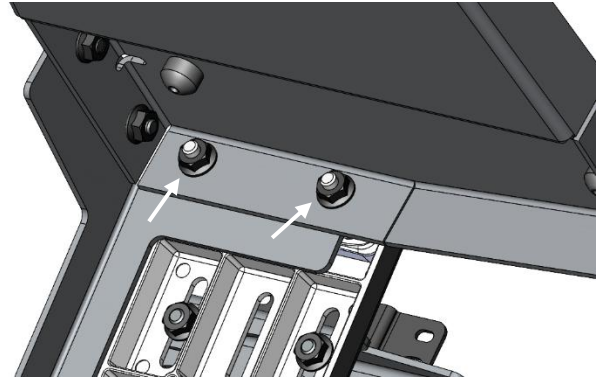
View of Interceptor Utility dash before installation



The C-DMM-3028 will need to be assembled when removed from shipping box.



Attach lower mounting support arm to main tray using 1/4" x 1/2" carriage bolts and serrated nuts.



Attach hinge assembly to main tray using 1/4" serrated nuts.

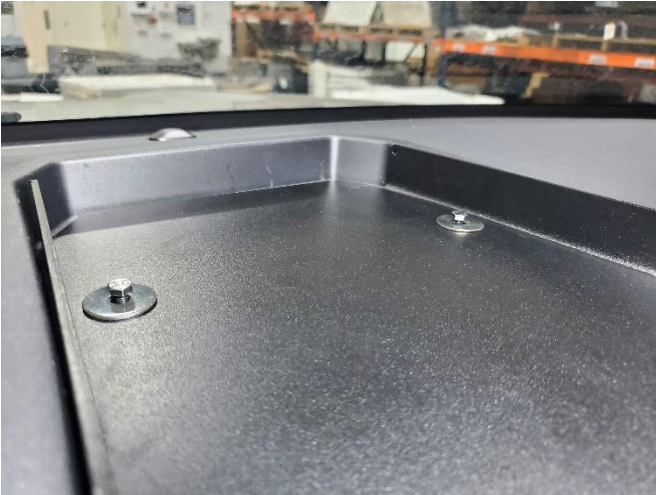


Remove OEM fasteners from upper dash pocket.  
Place plastic spacers over openings.  
(7mm socket)



Place DMM tray onto upper dash and push towards the windshield. Lower mounting tabs should sit around trim by vents as shown.





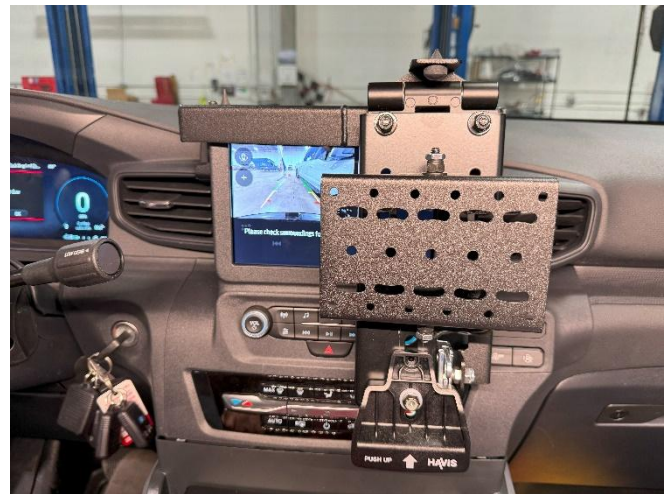
Place M5 x 30mm bolts and flat washers in top of tray, through spacers, and into the OEM clips. Tighten hardware.



Tighten lower mounting tabs using 8-32 x 3/4" screws and star washer. Push tabs into dash while tightening to ensure a good hold.



Test up and down motion of the arm and confirm smooth operation.



Attach display or docking station to VESA 75 holes in swivel bracket. It is easiest to do this by opening door and tilting bracket.



Dock the computer and test. Installation is now complete.