



2025-2026 CHEVROLET TAHOE STORAGE SOLUTIONS SIDE-BY-SIDE DUAL DRAWER SYSTEM



SIDE-BY-SIDE DUAL DRAWER BASE MOUNT FOR 2025-2026 CHEVY TAHOE SBX-5023

- Vehicle Specific kit for mounting side by side dual storage drawer series
- Compatible with Havis Standard K9 insert (K9-C26 & K9-C26-B)
- Raises drawers 6" above the floor
- Uses OEM mount points for a no-drill solution



STORAGE SOLUTIONS

WHEN EVERY SECOND COUNTS, ACCESS IS EVERYTHING.

Engineered for the demands of the Tahoe, this dual drawer setup transforms your cargo space into a mission-ready command center. With deeper drawers, rugged lock options, and new lightweight toppers, you get fast access and secure storage—because when seconds matter, your gear should be exactly where you need it.



**LARGE DUAL DRAWER WITH
MEDIUM-DUTY LOCK**
SBX-2001



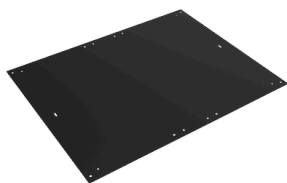
**LARGE DUAL DRAWER WITH
PUSH-BUTTON COMBINATION
LOCK**
SBX-2002



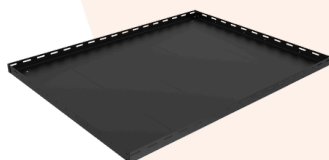
**SMALL DUAL DRAWER WITH
MEDIUM-DUTY LOCK**
SBX-2003



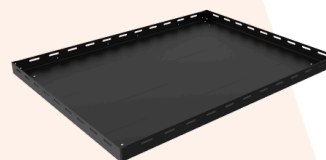
**SMALL DUAL DRAWER WITH
PUSH-BUTTON COMBINATION
LOCK**
SBX-2004



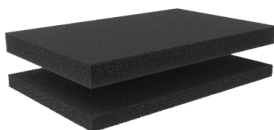
**DUAL DRAWER – BASIC FLAT
TOPPER**
SBX-3009



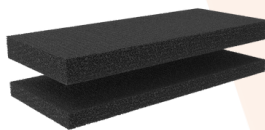
**DUAL SIDE-BY-SIDE DRAWER
BUNGEE TOPPER**
SBX-3010



**LARGE DUAL DRAWER BUNGEE
TOPPER**
SBX-3011



**FOAM INSERTS FOR LARGE
DUAL DRAWER STORAGE**
SBX-4021



**FOAM INSERTS FOR SMALL
DUAL DRAWER STORAGE**
SBX-4022



**STORAGE BIN WITH BUNGEE LIP
FOR SMALL DRAWER SECTION**
SBX-4023