

# Owner's Manual Havis Docking Station

For DT323 Series Rugged Tablet and Oracle Public Safety Tablet 210

## DS-DTR-100 Series

DS-DTR-101

DS-DTR-103



DS-DTR-100-SERIES-OMN\_10-25

# Before Beginning

Havis is pleased to provide this Owner's Manual to aid in the proper installation and use of the DS-DTR-100 Series Docking Station for the DT323 Series Rugged Tablet and Oracle Public Safety Tablet 210. For questions regarding the set-up of your DS-DTR-100 Series Docking Station, please contact Havis at 1-800-524-9900 or visit [www.havis.com](http://www.havis.com) for additional product support and information.

## WARNING

## AVERTISSEMENT

- NEVER STOW OR MOUNT THE DOCKING STATION DIRECTLY IN A VEHICLE AIRBAG DEPLOYMENT ZONE.
- DO NOT USE THE COMPUTER WHILE DRIVING.
- DO NOT PLACE METAL OBJECTS OR CONTAINERS OF LIQUID ON TOP OF THE DOCKING STATION.
- IF A MALFUNCTION OCCURS, IMMEDIATELY UNPLUG THE POWER SUPPLY AND REMOVE THE TABLET.
- NE JAMAIS PLACER OU MONTER LA STATION D'ACCUEIL DIRECTEMENT DANS LA ZONE DE DÉPLOIEMENT DES COUSSINS GONFLABLES D'UN VÉHICULE.
- NE PAS UTILISER L'ORDINATEUR EN CONDUISANT.
- NE PLACEZ PAS D'OBJETS MÉTALLIQUES OU DE CONTENANTS DE LIQUIDE SUR LE DESSUS DE LA STATION D'ACCUEIL.
- EN CAS DE DYSFONCTIONNEMENT, DÉBRANCHEZ IMMÉDIATEMENT LE BLOC D'ALIMENTATION ET RETIREZ LA TABLETTE.

## CAUTION

## ATTENTION

- READ ALL INSTRUCTIONS THOROUGHLY BEFORE BEGINNING INSTALLATION.
- DO NOT STORE, INSTALL, OR OPERATE THE DOCKING STATION WHERE WATER, MOISTURE, STEAM, DUST, ETC. ARE PRESENT
- FOR THE DS-DTR-101 DOCKING STATIONS: DO NOT CONNECT DIRECTLY TO VEHICLE VOLTAGE SOURCE: This product requires a certified, automotive grade, DTR/Havis approved power supply with a 19.5 V power output, such as the 120N-A01-R12-1. Failure to comply with this requirement will cause product damage that is NOT repairable and is NOT covered under warranty.
- USE ONLY THE SPECIFIED POWER SUPPLY WITH THIS DOCKING STATION.
- DO NOT CONNECT CABLES INTO PORTS OTHER THAN WHAT THEY ARE SPECIFIED FOR.
- DO NOT LEAVE THE DOCKING STATION IN A HIGH TEMPERATURE ENVIRONMENT (GREATER THAN 85°C, 185°F) FOR AN EXTENDED PERIOD OF TIME.
- LISEZ ATTENTIVEMENT TOUTES LES INSTRUCTIONS AVANT DE PROCÉDER À L'INSTALLATION.
- NE PAS ENTREPOSER, INSTALLER OU UTILISER LA STATION D'ACCUEIL DANS UN ENDROIT OÙ L'EAU, L'HUMIDITE, LA VAPEUR, LA POUSSIÈRE, ETC. SONT PRÉSENTS.
- POUR LES STATIONS D'ACCUEIL DS-DTR-101: NE PAS CONNECTER DIRECTEMENT À LA SOURCE DE TENSION DU VÉHICULE : Ce produit requiert un source de courant certifié, de qualité automobile et approuvé par Dell/Havis, pour une puissance de sortie de 19.5 V, comme le 120N-A01-R12-1. Le non-respect de ces exigences entraînera des dommages au produit qui ne seront PAS réparables et ne seront PAS couverts par la garantie.
- UTILISER UNIQUEMENT LE BLOC D'ALIMENTATION SPÉCIFIÉ AVEC CETTE STATION D'ACCUEIL
- NE PAS BRANCHER DE CÂBLES DANS D'AUTRES PORTS QUE CEUX AUXQUELS ILS SONT DESTINÉS.
- NE LAISSER PAS LA STATION D'ACCUEIL DANS UN ENVIRONNEMENT À HAUTE TEMPÉRATURE (PLUS DE 85°C, 185°F) POUR UNE PÉRIODE PROLONGÉE.

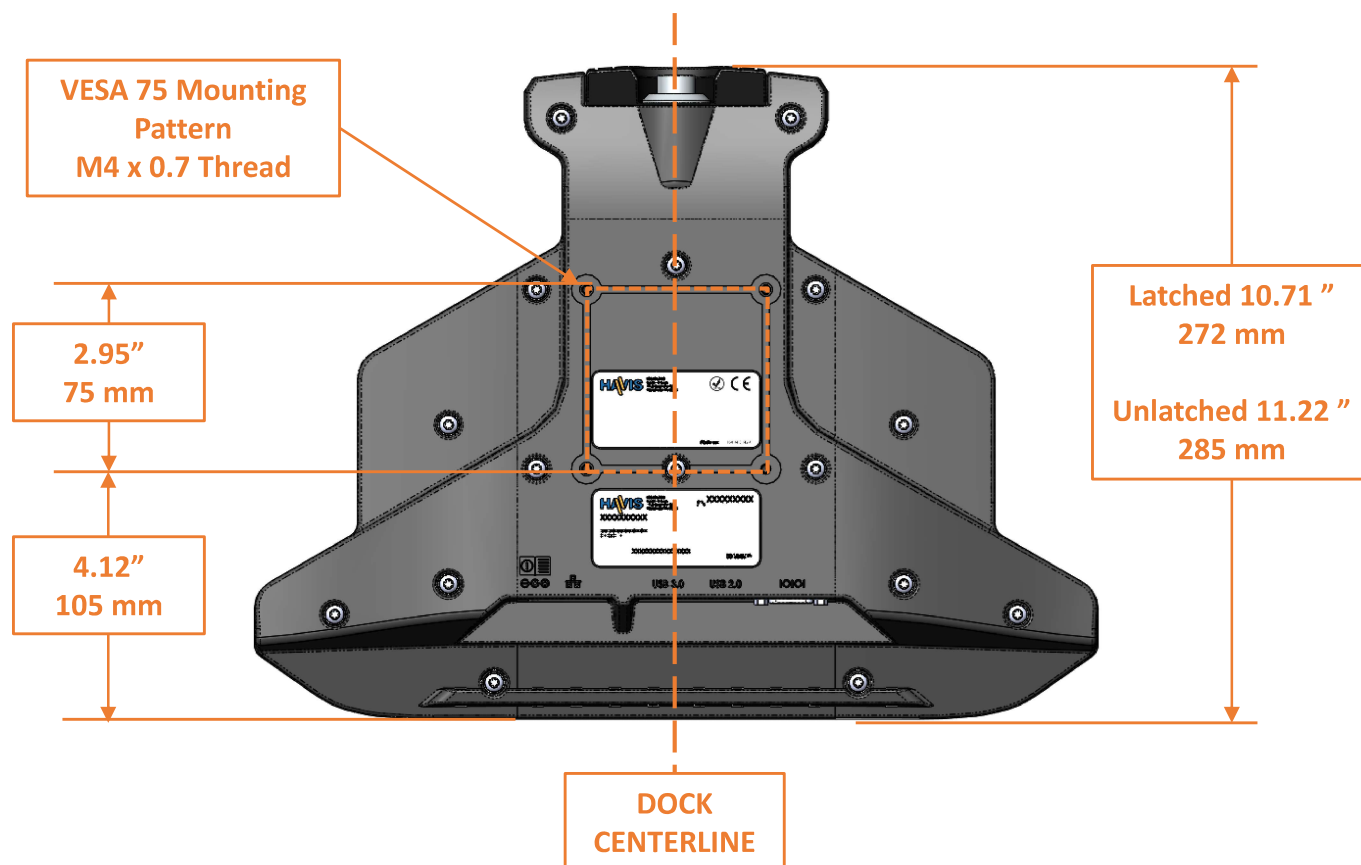
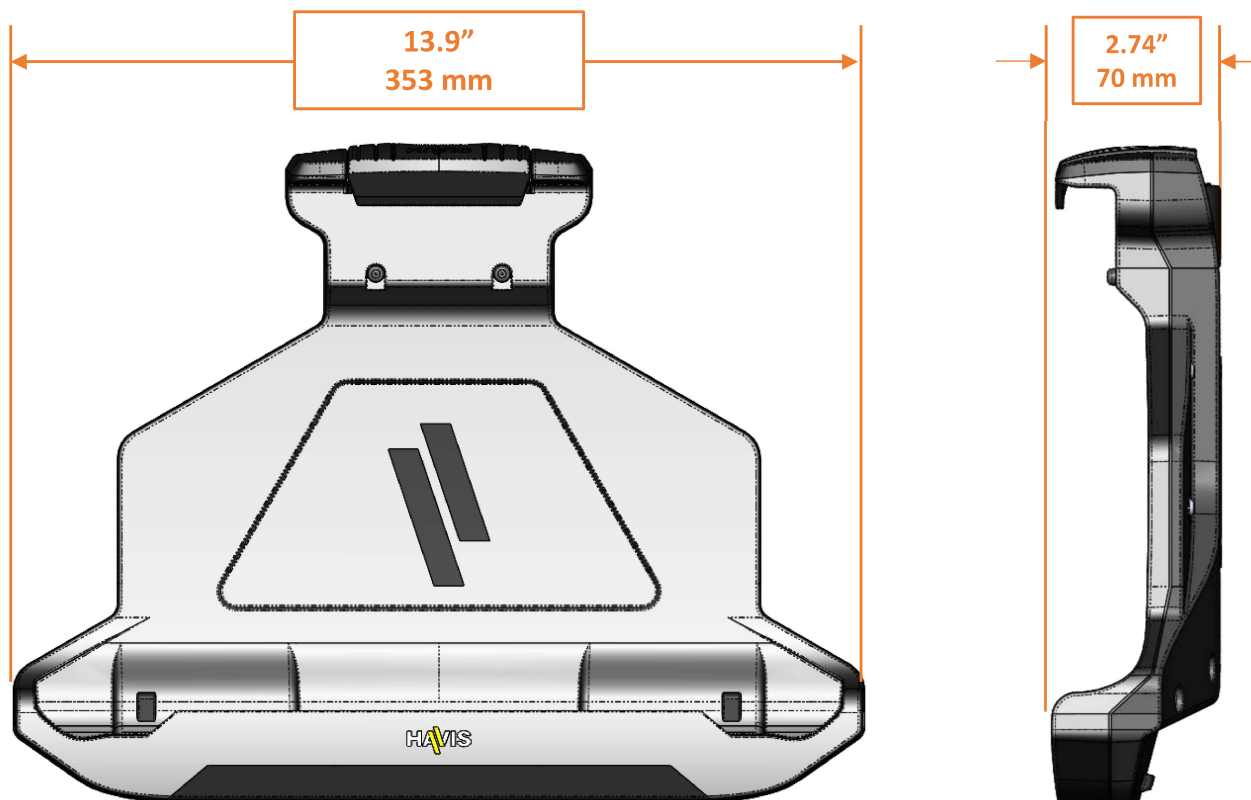
## NOTICE

- FOR THE DS-DTR-101, DO NOT CONNECT THE TABLET TO MULTIPLE POWER SUPPLIES. PRIOR TO DOCKING THE TABLET INTO THE DOCKING STATION, ENSURE THAT THERE IS NO POWER CABLE ATTACHED TO THE TABLET.

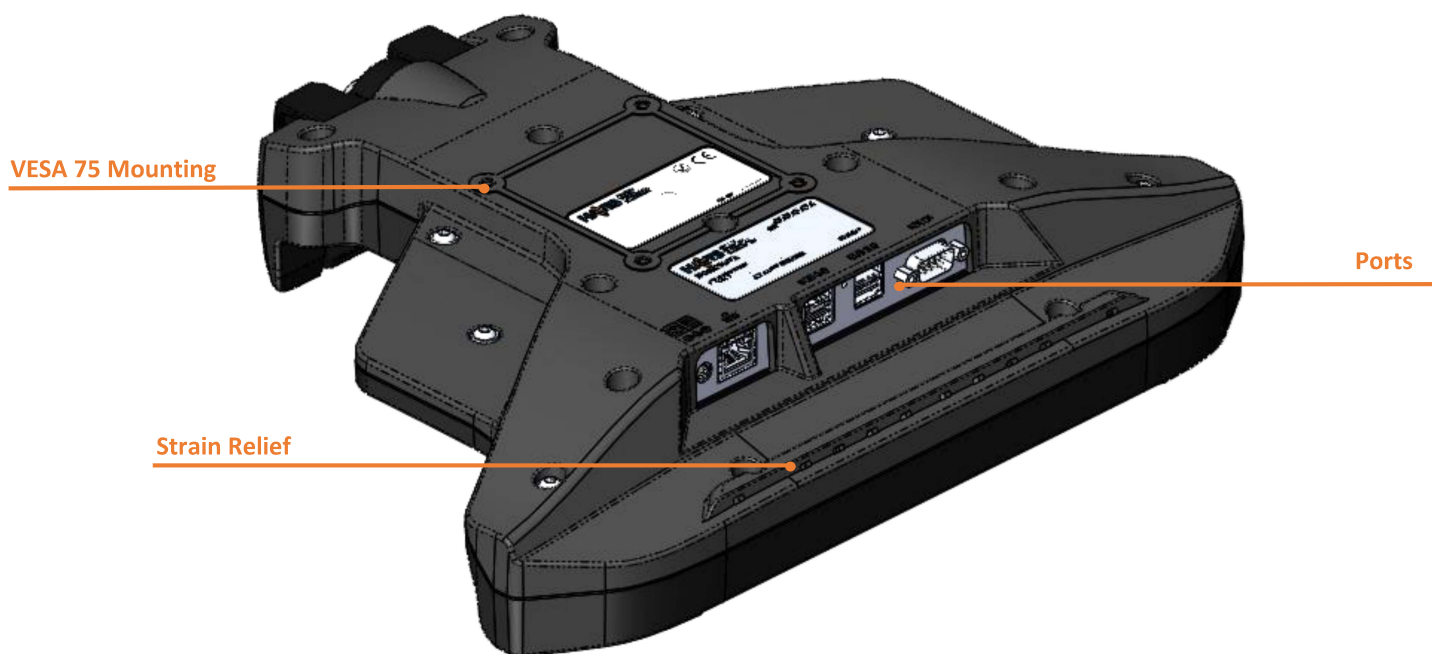
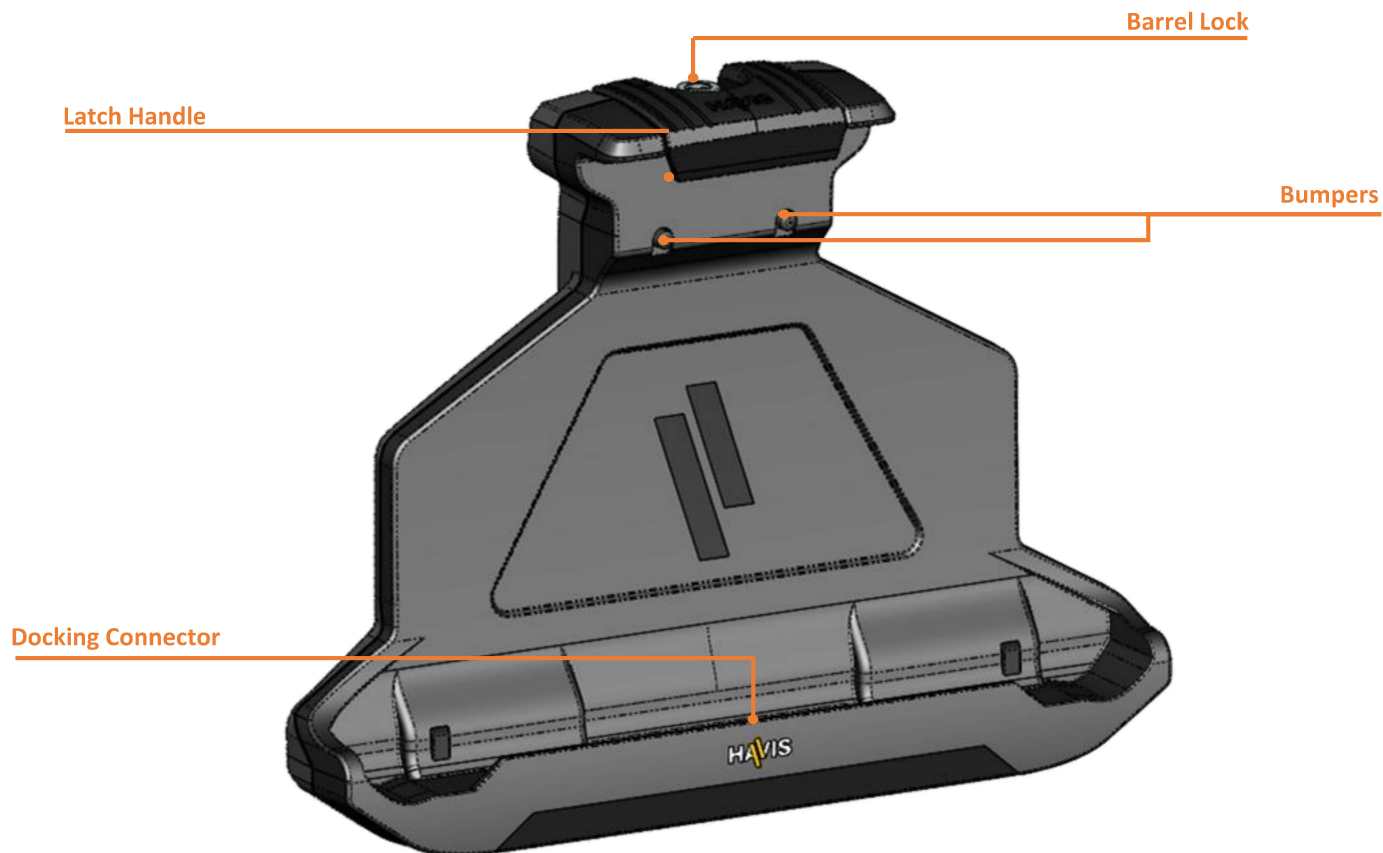
# Specifications

Docking Station Information	Configuration	Description	Power Options	Dock Input Voltage Requirement
	DS-DTR-101	Standard Electronics with Internal Power Supply	120N-A01-R12-1	11-22.6 VDC
	DS-DTR-103	No Electronics	None	None
Dimensions	10.71" (27.2 cm) H x 13.90" (35.3 cm) W x 2.74" (7.0 cm) D			
Weight	2.38 lbs. (1.25 kg)			
Operating Environment	-0° C to 50° C (32° F to 122° F)			
Storage Environment	-55° C to 70° C (-67° F to 158° F)			

# Specifications



# Specifications



## Parts Included (continued)

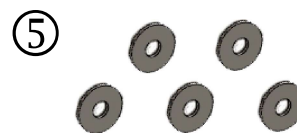
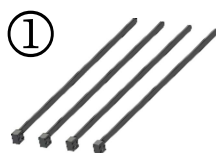
### Hardware Kit (30-013743)

This Hardware Kit includes:

1. Zip Ties (4)
2. Keys (2)
3. M4 x 0.7 x 12mm long Pan Head Screws (5)
4. Split Lock Washers (5)
5. Washers, M4 (5)

Tools required for installation:

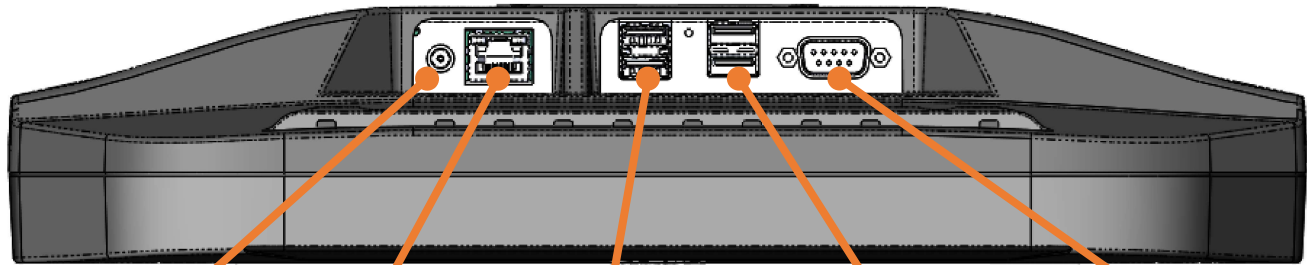
- #2 Phillips (For M4 Pan Head Screws)



# Port Replication Capability

## Rearward Facing Ports

DS-DTR-101



Power Input

Ethernet<sup>1</sup>  
RJ45  
1 Gb/s



USB 3.0  
Type A  
(2X)

USB 2.0  
Type A  
(2X)

Powered Serial  


## NOTICE

**DO NOT CONNECT ANY ADDITIONAL POWER SUPPLY TO THE TABLET WHEN IT IS DOCKED. MULTIPLE POWER SUPPLIES WILL CAUSE DAMAGE TO THE TABLET**



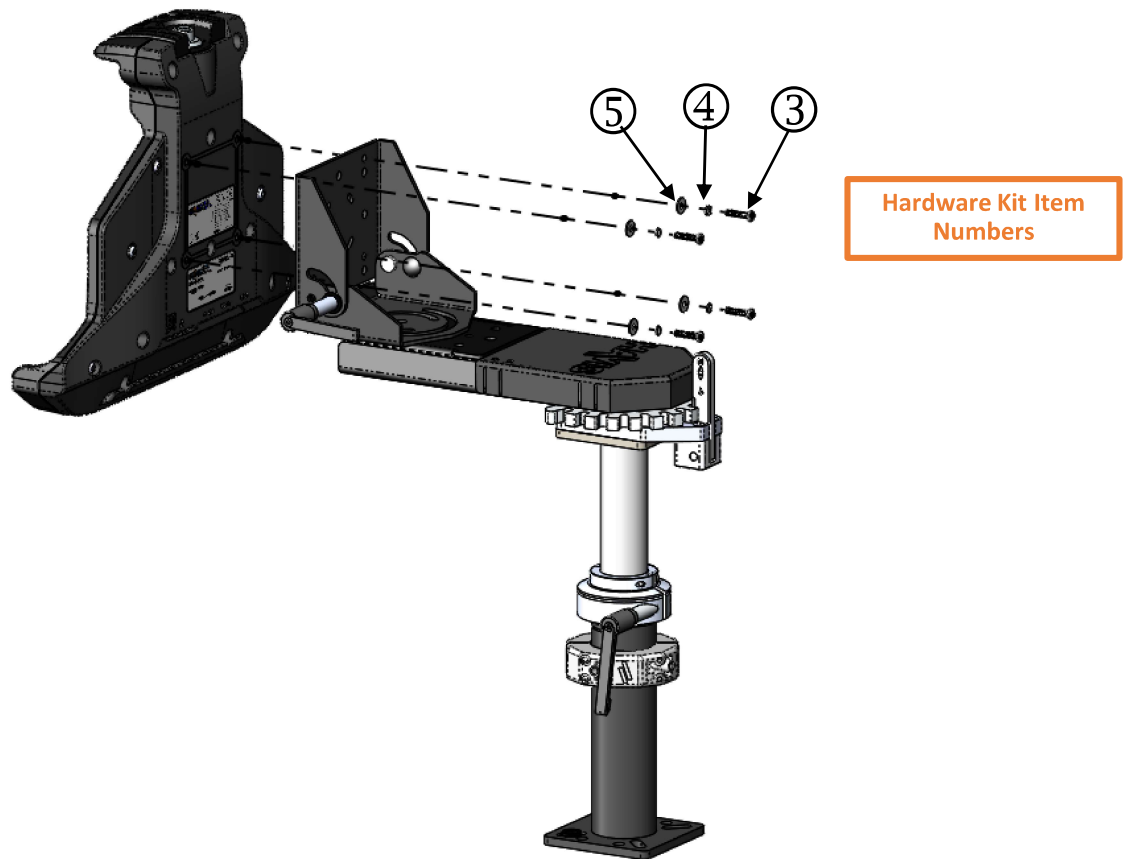
**NOTE: THIS DOES NOT APPLY TO THE DS-DTR-103 CONFIGURATION (THESE DO NOT HAVE AN INTERNAL SUPPLY AND NEED TO BE POWERED WITH THE EXTERNAL PORT WHEN DOCKED).**



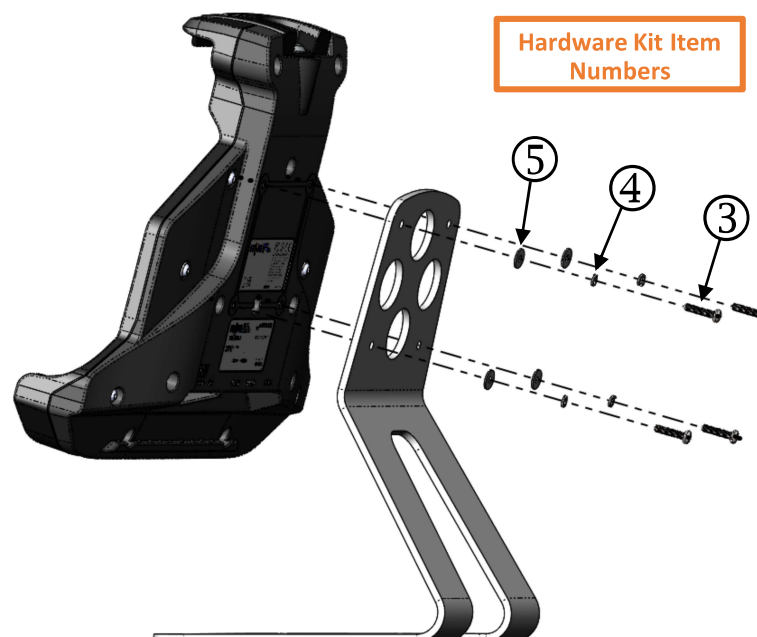
# Installation

1. Align Docking Station mounting holes with the hole pattern on mounting device. Use the (4) Pan Head screws with washers and lock washers from the hardware kit to fasten the docking station to the motion device (Hardware Kit Items 3, 4, 5). Torque screws to 12-15 in-lbs (1.4-1.7 Nm).

## A) HAVIS In-vehicle mounting system installation (Sold separately)



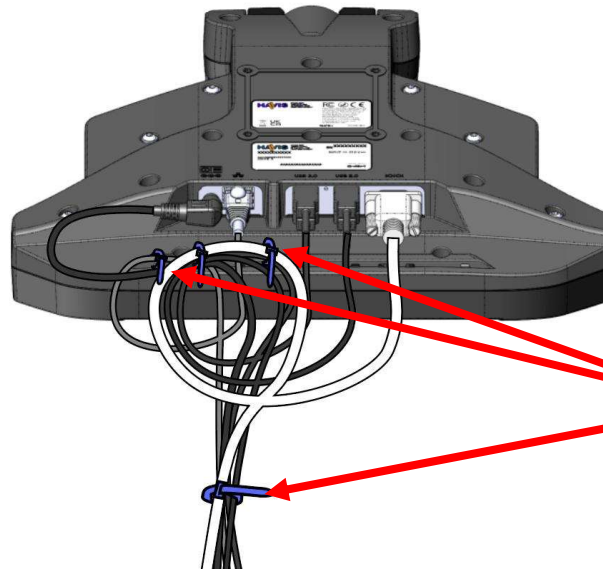
## B) HAVIS Desktop Stand installation (Sold separately)





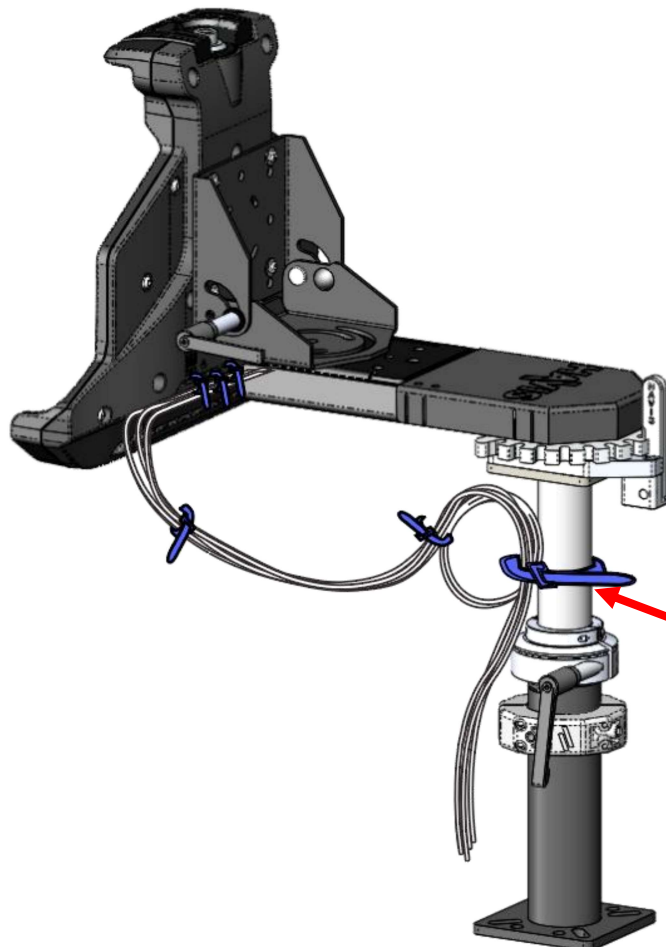
# Cable Management

2. Install all the cables that are necessary for your computing needs. Use zip ties (Hardware Kit Item 1) to strain relieve cables to strain relief points, routing all cables together so they can be attached to the mounting system



Use as many zip ties as necessary to secure cables

3. Create a service loop with cable bundle to ensure no tension is on the connectors and to enable intended motion.
4. Tie off cables onto a stationary part of the mounting system  
(Mounting system not included with the docking station)

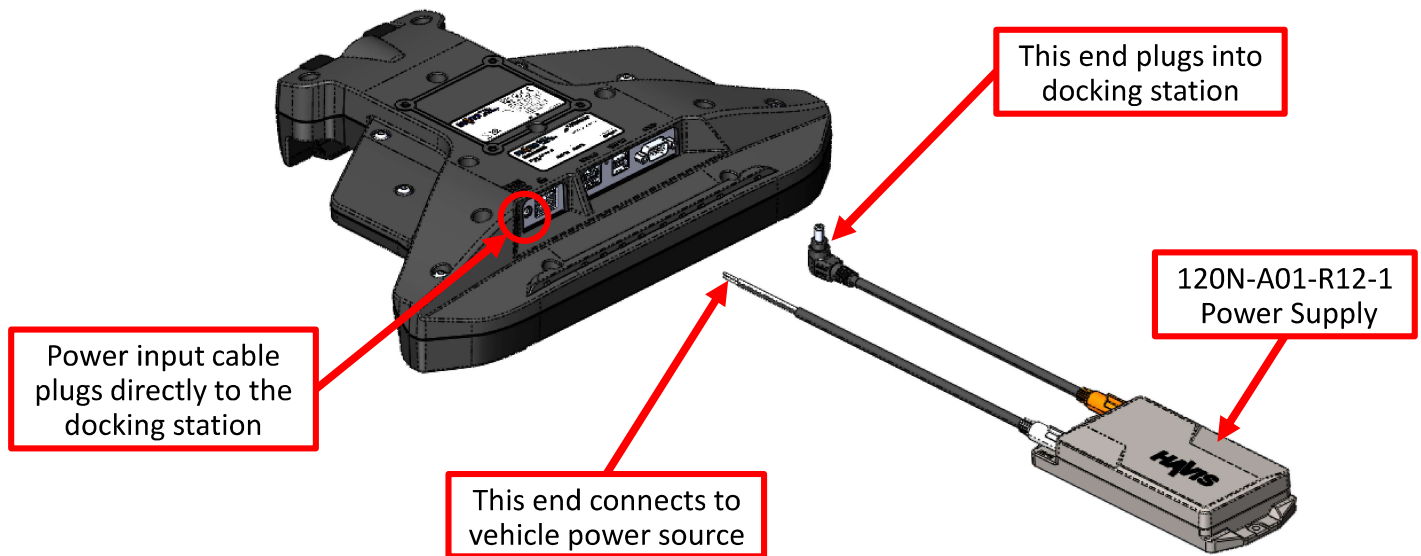


Zip tie cables onto mounting device as shown. Leave additional slack to allow motion device to move freely without stressing cables. Create a service loop if there is excess cable

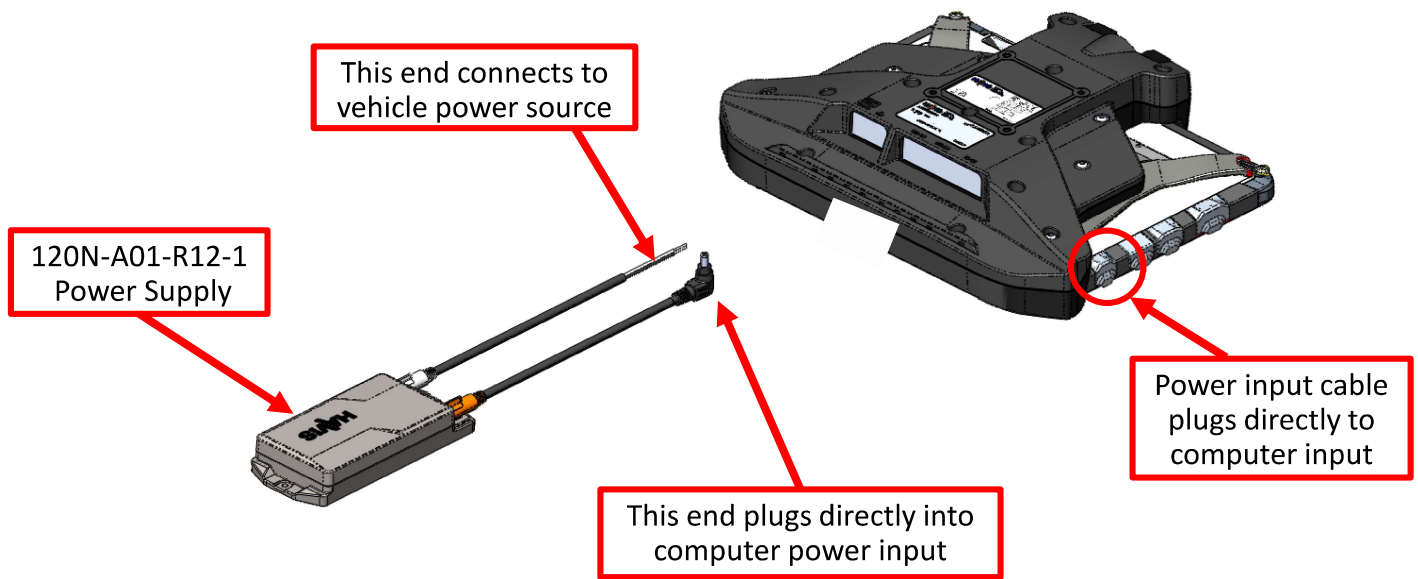
# Power Input Configuration

There are several different power supply options for the DS-DTR-100 Series Docking Station. Below are diagrams showing the power input set up for each specific configuration of the dock.

## External Power Supply Configuration DS-DTR-101



## Cradle Only Configuration DS-DTR-103

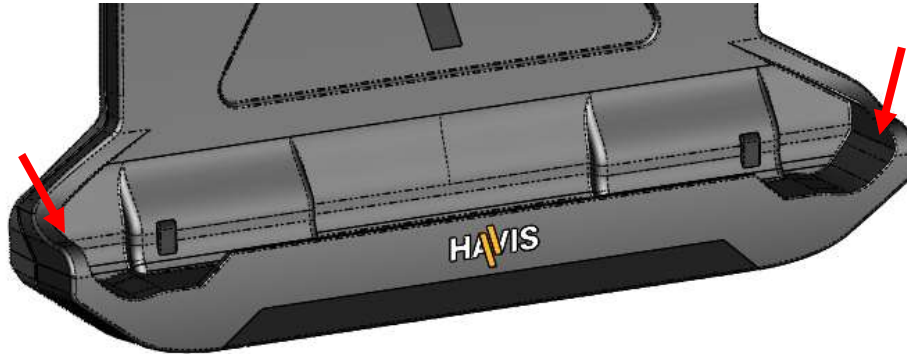


\*\*\* For clarity, all input/output power cables are shown shorter than their actual lengths

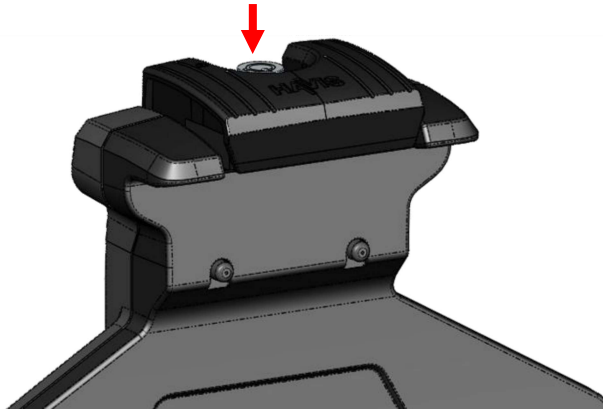
## Operation - Docking

### CAUTION

**DO NOT FORCE TABLET ONTO DOCKING STATION. IF THERE IS RESISTANCE, CHECK THE ALIGNMENT OF THE TABLET ON DOCKING STATION**



1. Ensure docking station is unlatched by pressing the lock button on the top of the docking station.



2. Hold the tablet in the landscape orientation, with the bottom side angled towards the docking station. Lower the tablet onto the docking station by aligning the tablet alignment sockets with the alignment posts on the docking station.



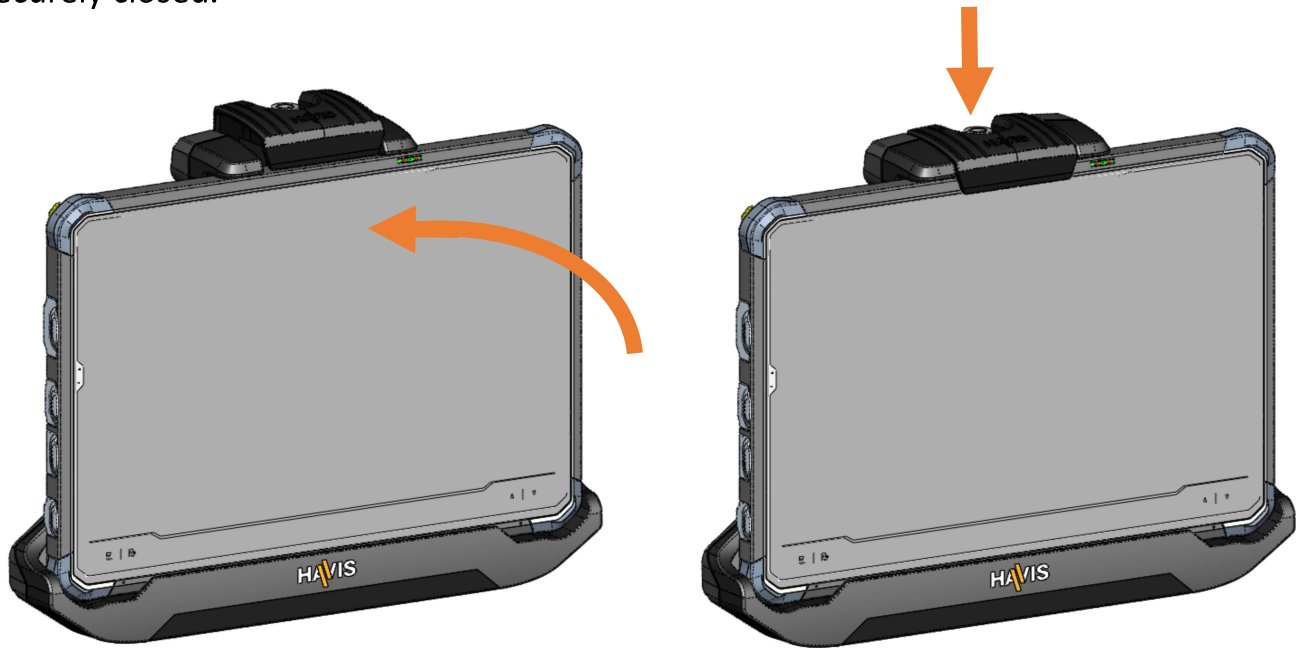
### WARNING



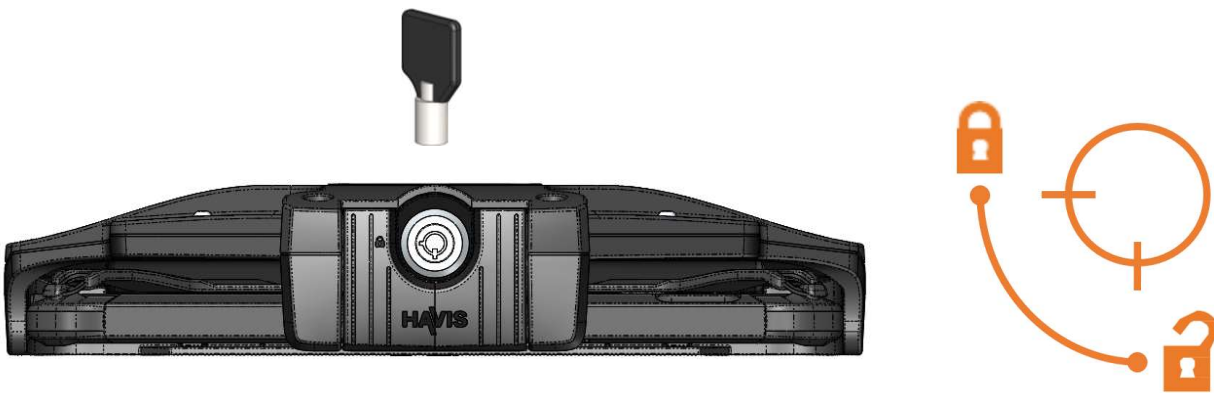
**DO NOT DOCK TABLET BACKWARDS IN THE DOCKING STATION OR DAMAGE TO THE SCREEN, TABLET ELECTRONICS, AND DOCKING STATION ELECTRONICS WILL RESULT**

## Operation – Docking (Continued)

3. Pivot the top of the tablet into the docking station and apply light rearward pressure to the top center of tablet or handle. Apply pressure until the tablet is fully seated. Secure tablet by closing the latch, push downward until you hear the click of the latch which indicates the latch is securely closed.

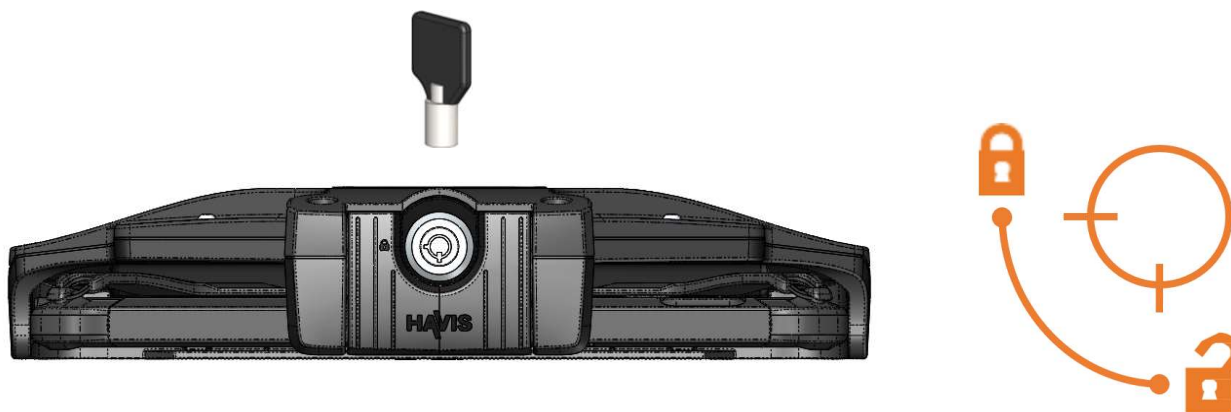


4. For theft deterrence, secure tablet by locking the docking station with the supplied key (Hardware Kit Item 2)



## Operation - Undocking

1. If previously locked, unlock Docking Station using the supplied key.



2. While securely holding the tablet, push the lock button on the top of the docking station until the latch hook releases.



3. Once unlatched, remove the tablet by rocking the top of the tablet away from the docking station and carefully lift out of the docking station, top end first.



# Regulatory Information

## Canada

### **CAN ICES-3 (B) / NMB-3(B)**

#### Class B equipment

This class B digital apparatus meets all requirements of the Canadian Interference-Causing Equipment Regulations.

#### Équipement de classe B

Cet appareil numérique de la classe B respecte toutes les exigences du Règlement sur le matériel brouilleur du Canada.

## United States of America

### **FCC Compliance**

This device complies with part 15 of the FCC Rules. Operation is subject to the following two conditions: (1) This device may not cause harmful interference, and (2) this device must accept any interference received, including interference that may cause undesired operation.

*Note:* This equipment has been tested and found to comply with the limits for a Class B digital device, pursuant to part 15 of the FCC Rules. These limits are designed to provide reasonable protection against harmful interference in a residential installation. This equipment generates, uses and can radiate radio frequency energy and, if not installed and used in accordance with the instructions, may cause harmful interference to radio communications. However, there is no guarantee that interference will not occur in a particular installation. If this equipment does cause harmful interference to radio or television reception, which can be determined by turning the equipment off and on, the user is encouraged to try to correct the interference by one or more of the following measures:

- Reorient or relocate the receiving antenna.
- Increase the separation between the equipment and receiver.
- Connect the equipment into an outlet on a circuit different from that to which the receiver is connected.
- Consult the dealer or an experienced radio/TV technician for help.

Changes or modifications not expressly approved by the party responsible for compliance could void the user's authority to operate the equipment.

Responsible party (contact for FCC matters only):

Havis, Inc.  
75 Jacksonville Road  
Warminster, PA 18974  
[havis.com/contact-us](http://havis.com/contact-us)



## Related Products

Havis offers a wide variety of accessory products specifically for use with your Docking Station. For more information or to order, please visit [www.havis.com](http://www.havis.com).



### DS-DA-218

#### *Desktop Stand*

Durable stand for mounting the DS-DTR-100 Series Docking Station in the home or office.



### DS-DA-502

#### *Replacement Keys*

Set of (2) replacement keys for DS-DTR-100 Series Docking Stations



### Power Supplies (for DS-DTR-101 and DS-DTR-103)

#### 120N-A01-R12-1

*Power Supply w/Hardwired Input Cable (12-16VDC)*