

# INSTALLATION INSTRUCTIONS

## SBX-5013 Standalone mounting base for C-SBX-101 Universal Storage Box in 2011-2021 Dodge Durango

### **TOOLS REQUIRED:**

Standard socket set

Standard wrench set

T-20 Torx driver

### **PARTS and MOUNTING HARDWARE:**

#### **SBX-5009**

<b><u>QTY</u></b>	<b><u>DESCRIPTION</u></b>	<b><u>PART#</u></b>
1	Mounting base	13288
2	Mounting riser	24476
1	Filler panel	13317
1	Cover plate	25855
15	#8 x 3/8" Torx screw	13405
8	5/16" Hex nut	15999
8	5/16" Flat washer	16123
8	5/16" Split lock washer	16143
6	1/2" Flat washer	16126
6	1/2" Split lock washer	16145
4	M12 x 1.75" Hex nut	16107
2	M12 x 1.75 Bolt	16524
4	1/4" X 3/4 Phillips head bolt	16404
4	NUT 1/4-20 Hex flange nut	15013
4	1/4 Flat washer	16122
6	Rubber bumper w/PSA	20346

**NOTE: If you are also installing Progard rear partition, you must purchase the optional SBX-5009-PROKIT support bracket kit.**

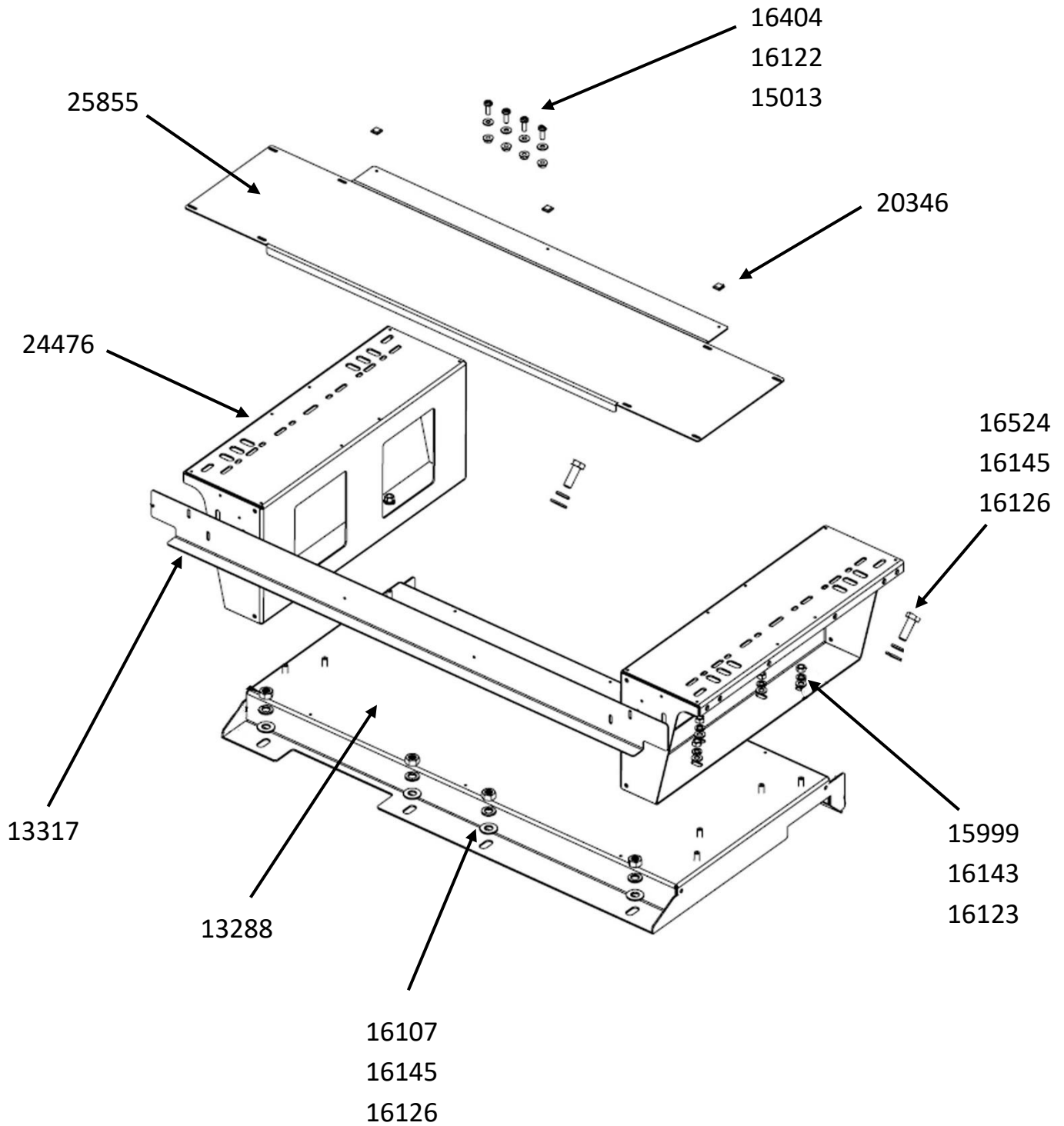
**See SBX-5009 / SBX-5009-PROKIT instructions prior to installing C-SBX-101 Box.**

### **Always!**

- Read all instructions before installing any Havis, Inc. products.
- **Check for obstructions (Wires, brake lines, fuel tank, etc.) if drilling any holes!**
  - Use hardware provided with install kit

# SBX-5013

## Assembly





View of Durango trunk before installation



Flip down rear seats, unsnap forward storage pocket covers, and forward trim.



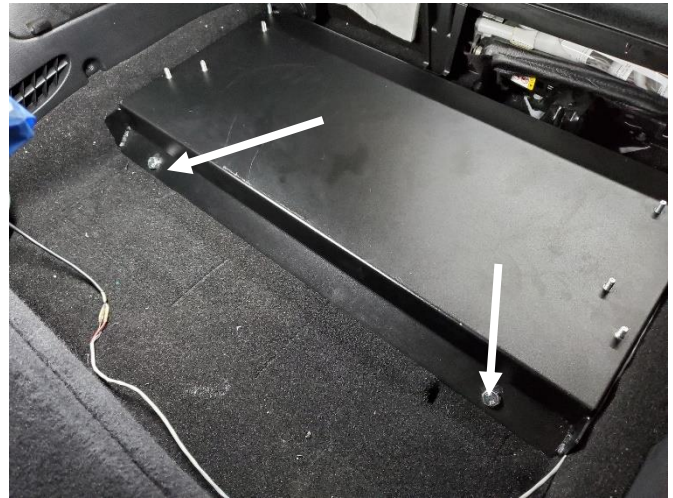
Remove rear storage cover, this unsnaps from the base.



Locate and remove (2) Phillips head screws from forward storage area.  
(1 each side)



Remove forward storage pockets from vehicle.  
These will not be reused.

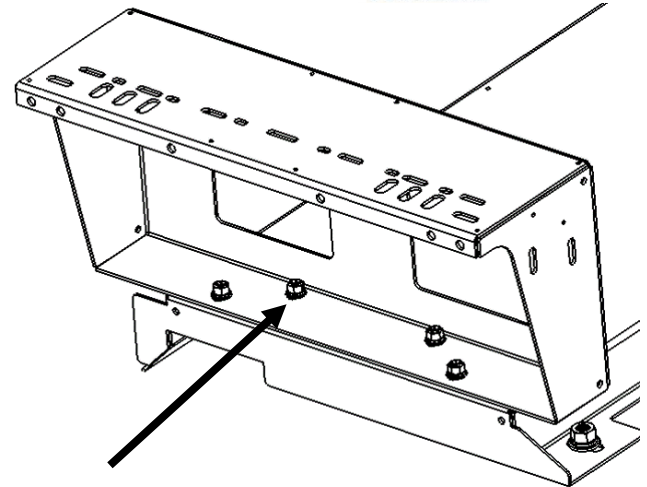


Insert mounting base and attach to OEM holes using (2) M12 x 1.75" bolts, washers, and split lock washers.  
***If relocating or adding equipment to the tray, do so at this time.***

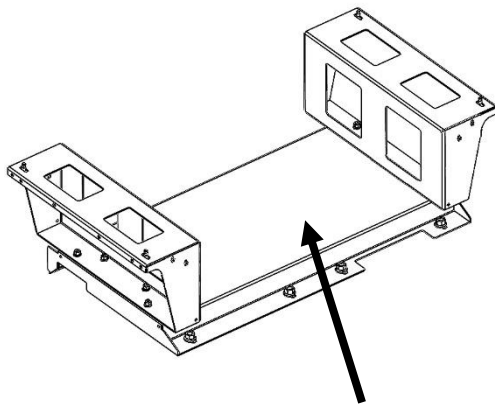




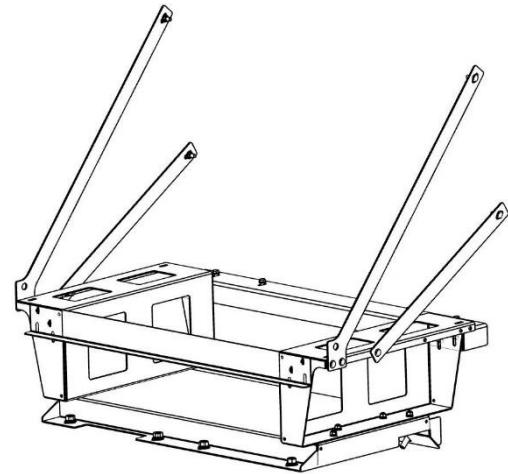
Attach the rear of the mounting base to the floor studs using (4) M12 nuts, split lock washers, and flat washers.



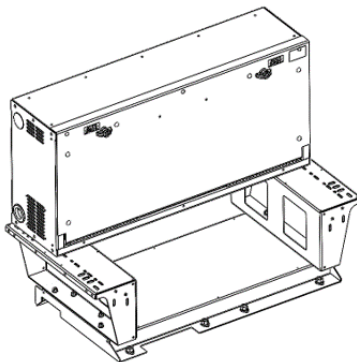
Loosely attach each mounting riser to base studs with (4) 5/16" hex nuts, lock washers and flat washers.



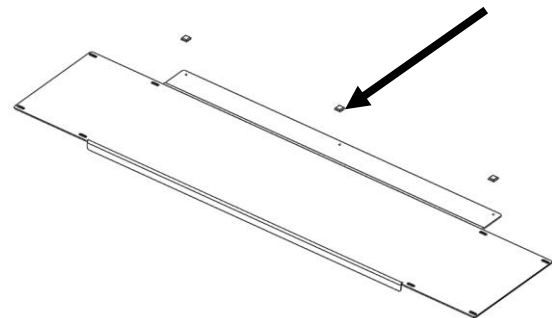
Attach optional SBX-4015 Electronics mount plate to mounting base with (6) Torx screws provided with plate.



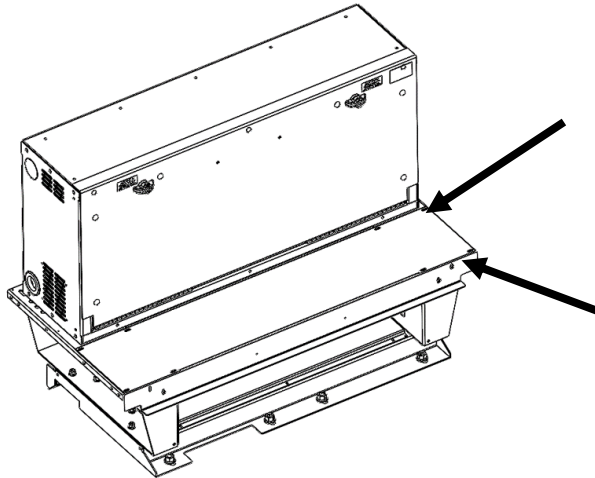
This shows the optional SBX-5009-PROKIT support brackets attached to risers for reference. See SBX-5009 / SBX-5009-PROKIT instructions for specific PROKIT and partition mounting details.



Place the C-SBX-101 Box onto the legs and determine desired location. Loosely attach SBX using (4) 1/4 x 3/4" Phillips head bolts, lock washers, flat washers, and nuts.



Attach three (3) adhesive-backed rubber bumpers onto cover plate (forward offset lip) as shown. Center the bumpers on the small holes. This is intended to minimize possible rattle between box and plate.



Loosely attach cover plate and filler panel to ensure that twelve (12) Torx screws align with pilot holes. Remove plate and filler then tighten all hardware for legs to base and legs to SBX. Reattach cover plate and filler panel.

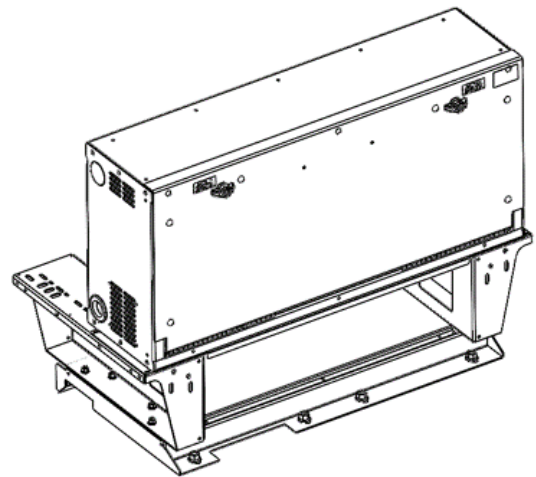


View of C-SBX-101 and SBX-5013 installed in the common forward position.

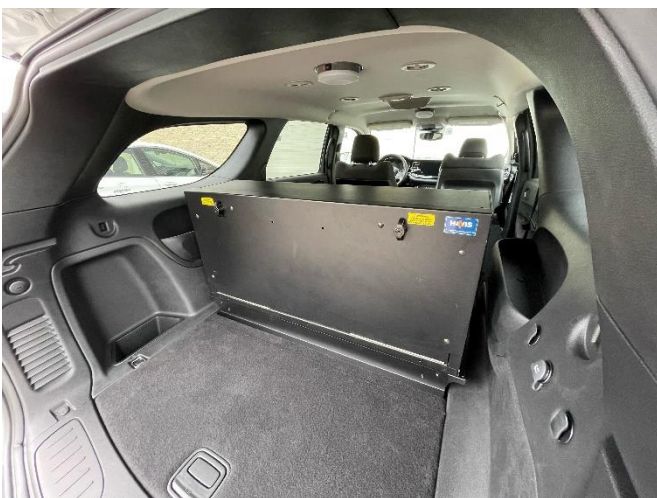
Attach (3) adhesive-backed rubber bumpers midway down on door for cushion when door is opened.



Complete wiring and or other equipment mounting as desired.



C-SBX-101 can be mounted on rear end of SBX-5013 if desired.



C-SBX-101 mounted on rear end of SBX-5013.



C-SBX-101 mounted on rear end of SBX-5013.