

INSTALLATION INSTRUCTIONS - WGI-C26

2021-2025 Chevy Tahoe Interior Window Guards

Recommended to be used with Havis door panels DP-C26-A.

Can use with OEM door panels, but drilling holes in door panels is required.

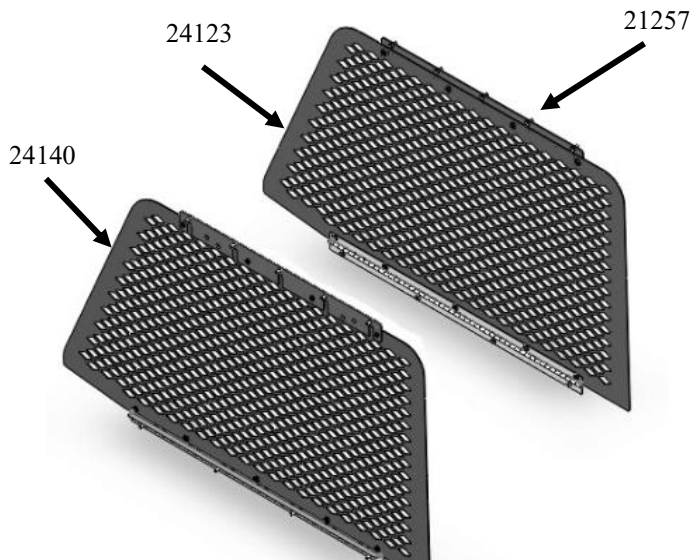
TOOLS REQUIRED:

Drill and drill Bits

Phillips Screwdriver

HARDWARE and PARTS:

QTY:	DESCRIPTION:	PART #:
1	Driver Side interior Window Guard	24140
1	Passenger Side interior Window Guard	24123
2	Upper Guard Mount Bracket	21257
10	# 10 x 1/2" Phillips flat head SMS	16641
8	#10 X 1/2" Phillips pan head SMS	16655



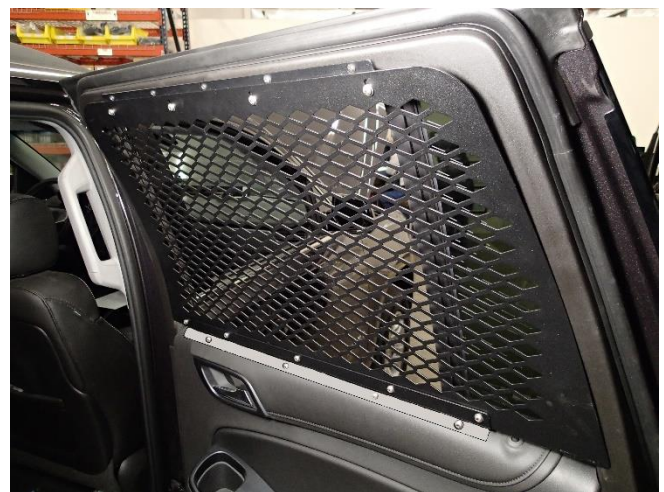
Upper brackets and lower hinges come pre-assembled to guards when shipped.



Align the hinge mounting holes to holes in the Havis DP-C26-A door panel. Attach hinge with # 10 x 1/2 Phillips pan head sheet metal screws. OEM door panel will require 1/8" pilot holes for attaching hinge with same screws.



Mark and drill 5/32" holes in door / window frame for upper bracket. Screw upper bracket to door frame with # 10 x 1/2" flat head sheet metal screws.



WGI-C26 INST 6-25

Installation Complete.

To clean windows, unscrew guard from upper bracket.