

# INSTALLATION INSTRUCTIONS C-VSW-2000-LTNG

## Vehicle Specific Console for 2022-2026 Ford F-150 Lightning Pickup And 2021-2026 Ford F-150 XLT Retail Pickup

**20" inches of Equipment mounting space**  
 \* Console does not work with 4 X 4 floor shifter \*

**TOOLS REQUIRED:**

Phillips Screw Driver	Standard Socket set	T-20 Torx Bit
Metric Socket set	7/16" Wrench	

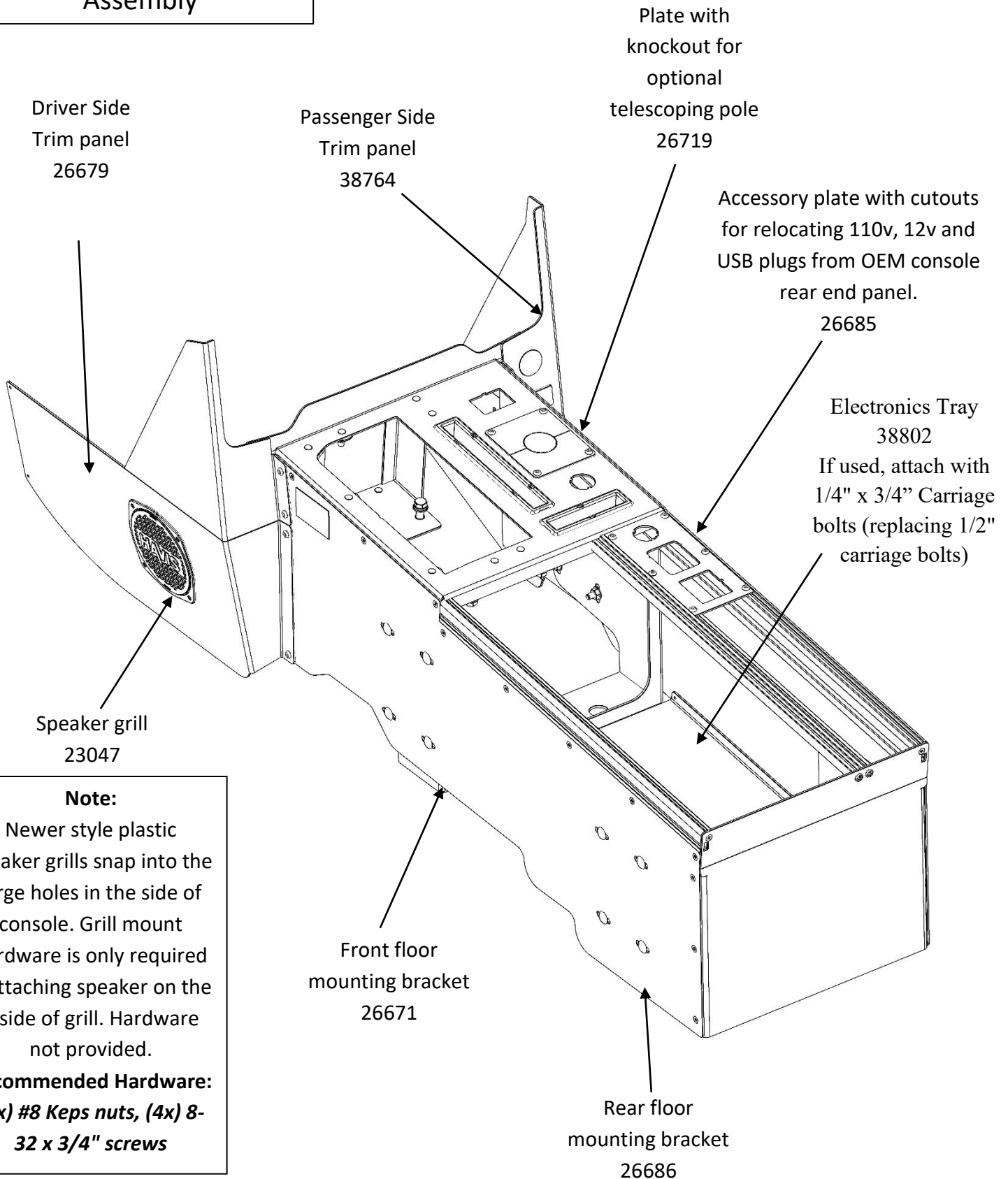
**INSTALLATION PARTS AND MOUNTING HARDWARE:**

<u>QTY</u>	<u>DESCRIPTION</u>	<u>PART#</u>	
1	Front floor mounting bracket	26671	
1	Rear floor mounting bracket	26686	} (already attached to console)
1	Accessory Pocket (1" x 4" id)	26637	
1	Accessory Pocket (1" x 7" id)	26638	
2	Speaker grill	23047	
1	Rubber liner for 4" pocket (.562" x 3.613")	26688	
1	Rubber liner for 7" pocket (.562" x 6.863")	26689	
1	Driver Side trim panel	26679	
1	Passenger Side trim panel	38764	
1	Shifter Rear mount bracket	26682	
1	Shifter Front mount bracket	26683	
1	Electronics Tray	38802	
1	Accessory filler plate	26685	
1	Knock out plate for optional internal pole	26719	
1	O-Ring (1.299" id x 1.505" od)	26999	
1	Rocker switch blank cover	14000 (C-SW-B)	
1	1/4" Hex nut kit	25520 (includes 12 nuts)	
18	#8 X 3/8 PHSMS TORX	13405	
1	1/16" Round hole plug	15804	
8	1/4" Nylock nut	16008	
5	1/4" Flat washer	16122	
3	1/4" Fender washer	16210	
4	1/4"x 3/4" Carriage bolt	16223	
4	5/16" Flat washer	16123	
4	5/16" Lock washer	16143	
4	5/16-18 X 1 1/4 HHCS	16337	
2	10-32 X 1/2 PPHMS	16399	
2	#10 Flat washer	16121	
4	O-Ring (1-1/16" id x 1-3/16" od)	16217	
1	8" x 2.5" x 2" Foam	12457	

**Always!**

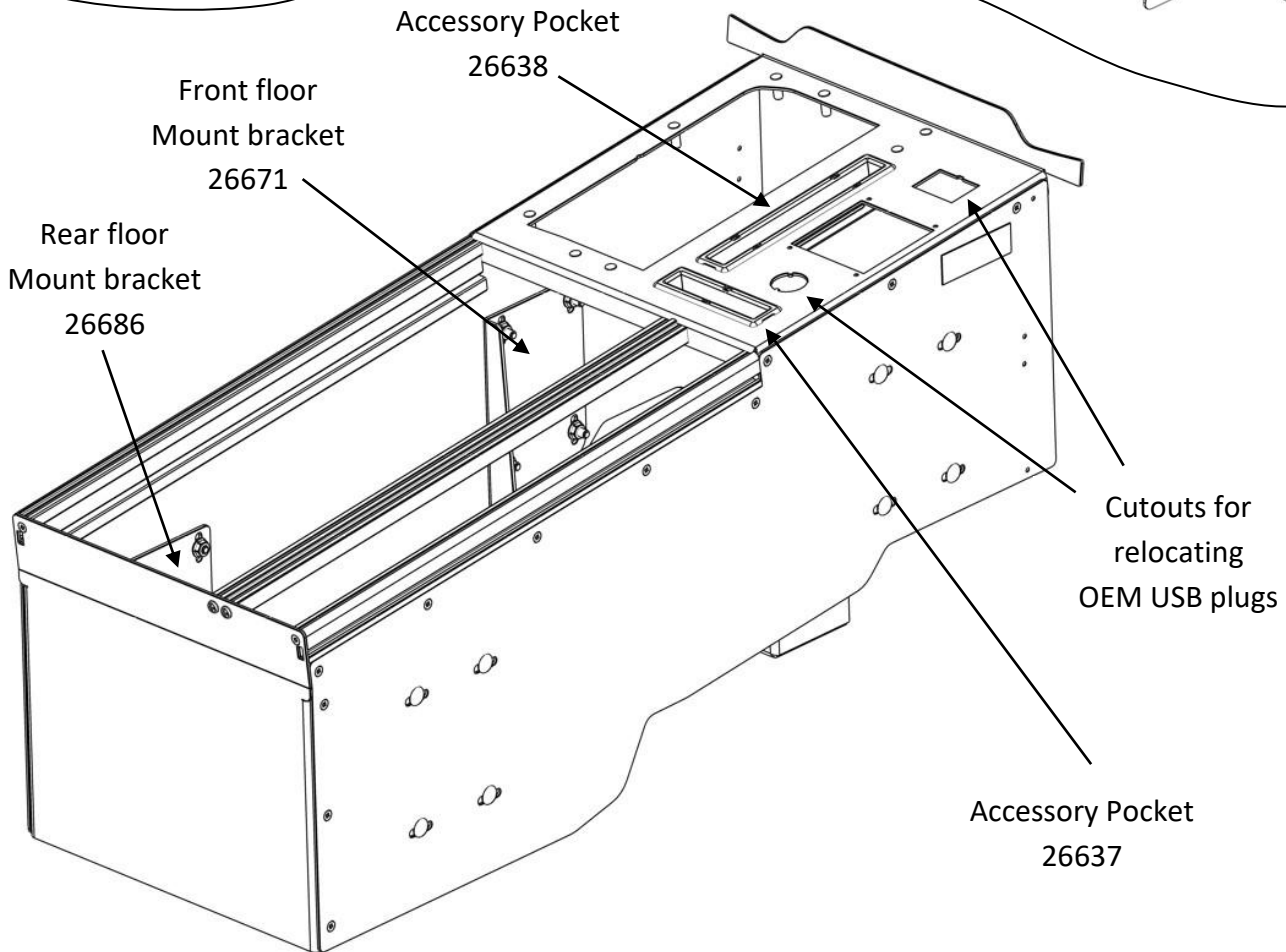
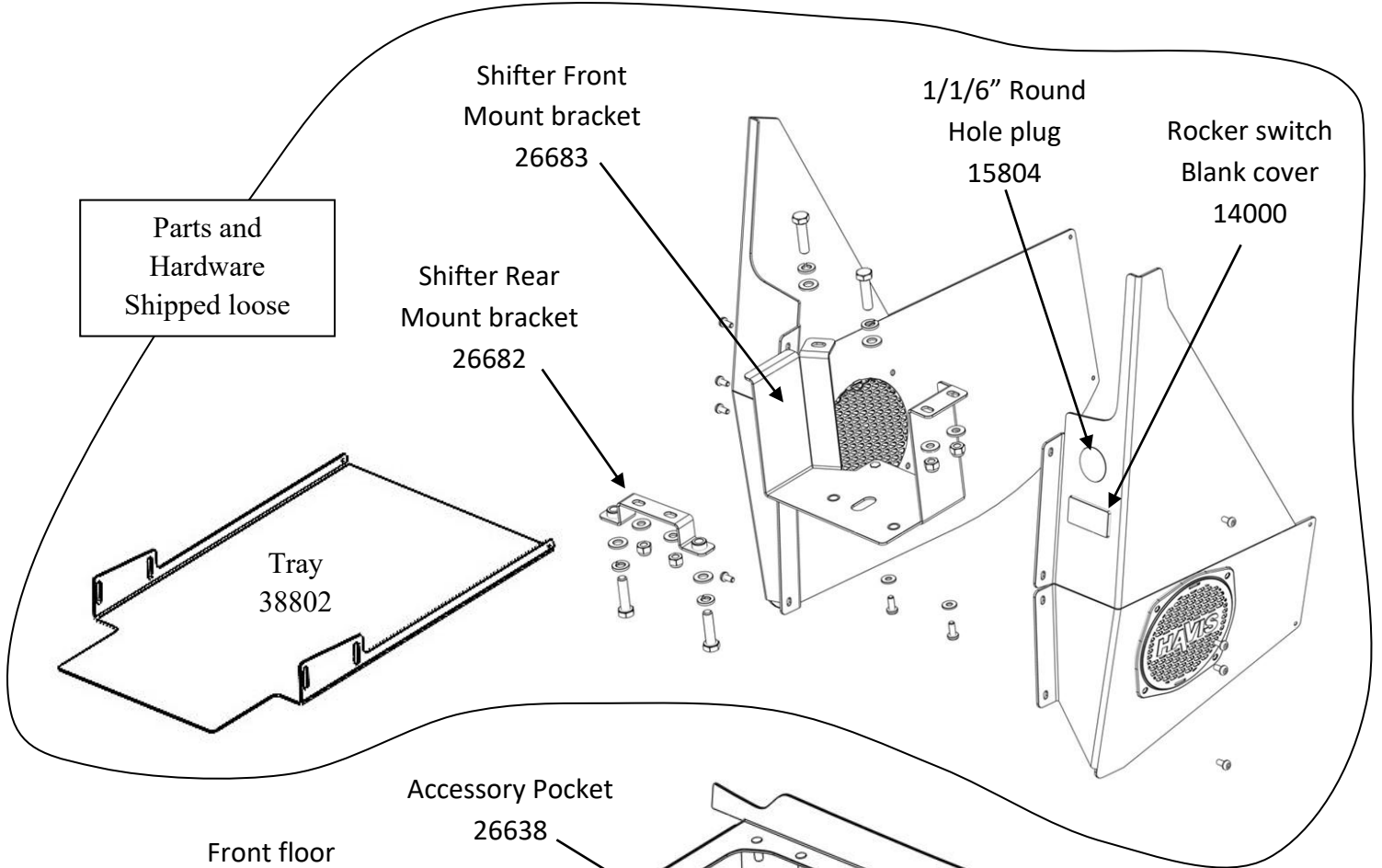
- Read all instructions before installing any Havis, Inc. products.
- Use hardware provided with install kit

**C-VSW-2000-LTNG**  
Assembly



**Note:**  
Newer style plastic speaker grills snap into the large holes in the side of console. Grill mount hardware is only required if attaching speaker on the inside of grill. Hardware not provided.

**Recommended Hardware:**  
**(4x) #8 Keps nuts, (4x) 8-32 x 3/4" screws**





View of OEM console.



Remove OEM console by detaching side trim panels, disconnecting wire harness and removing six mounting screws.



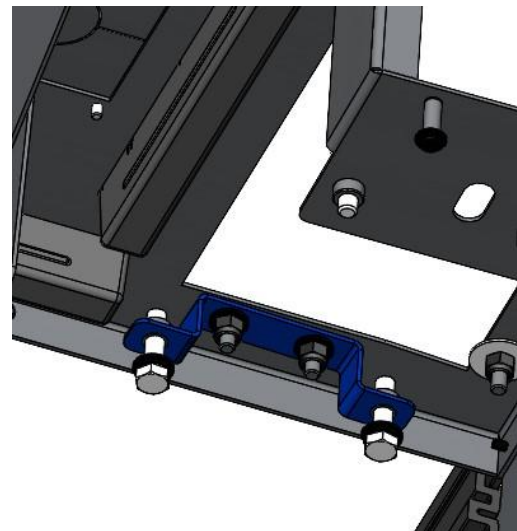
Remove wiring harness from OEM console.  
**Note:** OEM console lighting does not need to be removed because it will not be used.



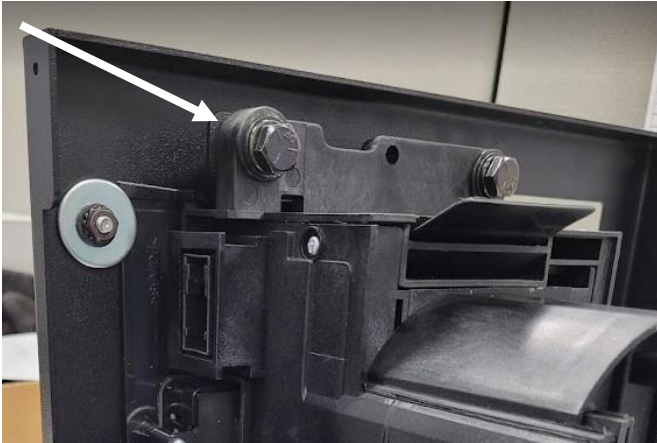
Remove shifter, all charging port modules and power plugs from OEM console.



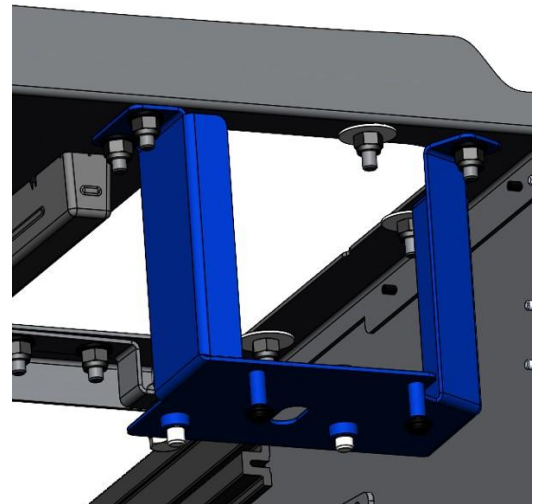
Remove keyless entry antenna with its mount from underneath the cup holder. Remove the antenna's mounting screws. Do not remove the captive nuts.



Loosely attach the shifter rear mounting bracket to the console center crossbar using two 1/4-20 Nylock nuts and washers.



Loosely attach shifter to rear mounting bracket using 5/16-18 X 1-1/4 bolts, split lock washers, and washers.



Loosely attach the shifter front mounting bracket to the console center crossbar using three 1/4-20 Nylock nuts and washers. Shifter not pictured.



Loosely attach shifter to front mounting bracket using 5/16-18 X 1-1/4 bolts, split lock washers, and washers.



Center shifter in cutout and tighten all hardware. **Note:** Tighten 5/16-18 screws before tightening 1/4-20 nuts.



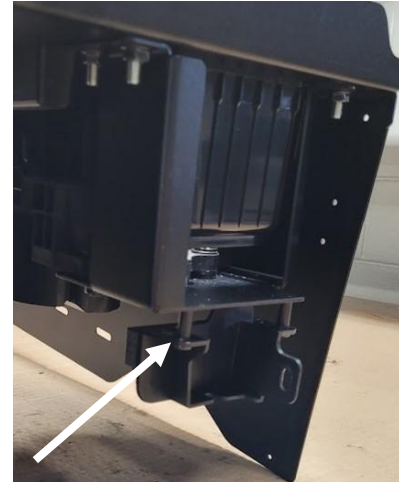
Loosely attach three 1/4-20 Nylock nuts and 1" fender washers to threaded studs near shifter. **Note:** Washers should seat underneath shifter lip.



Tighten the three 1/4-20 Nylock nuts and 1" fender washers until the shifter sits flush with the center console bracket.



**Note:** Only two shifter sides can be pulled flush to the bracket.



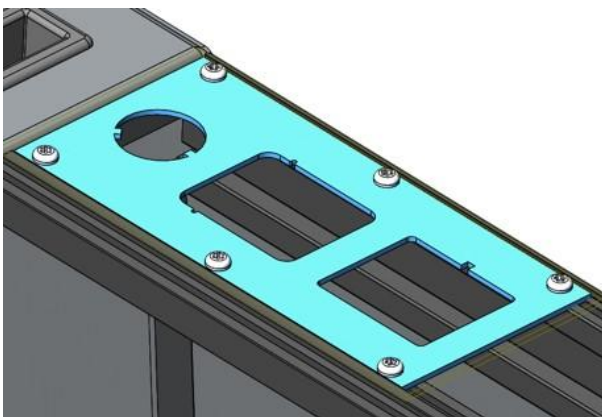
Attach keyless entry antenna to front shifter bracket threaded standoffs using two 10-32 X 1/2" screws and washers.



Attach large O-ring (spacer) to OEM AC 110V module. Make sure the four plastic clips are pulled to the outside of the O-ring. O-ring not needed for other large module.



Attach smaller O-rings (spacers) to the underside of the four remaining OEM port modules.



Install all power port modules. All should click to firmly seat. **Note:** All plugs have locating features and can only be installed in one orientation.



Attach wiring harness to OEM components. Connectors for OEM console lighting will not be used. Connector for front square USB port is located in vehicle and is not attached to wiring harness. This will be connected later.



Remove OEM console floor mounting brackets. Retain mounting bolts.

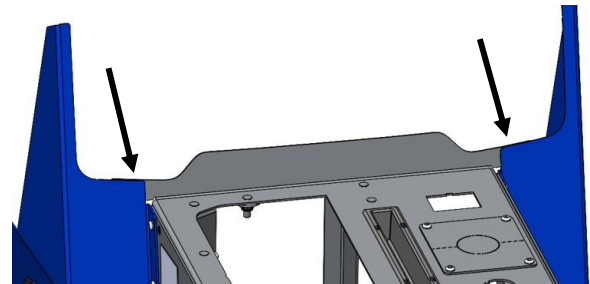


If internal pole mount is to be used, use the four carriage bolts on console front passenger side mounting bracket and loosely attach pole. Split cover plate in half and remove center cutout. Attach cover plate around pole using four Torx screws.



Loosely attach console to floor using four previously removed OEM mounting bolts. Attach all wire harness connectors to vehicle. Start vehicle to make sure all wiring has been properly connected.

**Insert foam to block off air vent.**



Make sure sixteen carriage bolts on console mounting brackets are loose. Loosely attach front trim panels using eight Torx screws.

**Note:** Trim panels sit on top of the console crossbar bracket.



Position trim panels tight to dash and tighten eight Torx screws. Tighten sixteen carriage bolts on mounting brackets. Tighten four (4) floor mount bolts.



Install desired equipment and accessories to complete installation.