

INSTALLATION INSTRUCTIONS

C-TTP-TAH-104

2021-2026 Chevrolet Tahoe PPV

**Fits with Havis Extra Length and K9-PT inserts
(K9-C26-XL, K9-C26-XL-B, K9-C26-PT and K9-C26-PT-B)**

***Note: Used for attaching optional C-TTP-TAH-107 or
C-TTP-TAH-108 Riser Kits for SBX-1000 series drawers.***

TOOLS REQUIRED:

Standard Socket Set

5/32" Allen Key/hex bit

T50 Torx

Metric Socket Set

PARTS and MOUNTING HARDWARE:

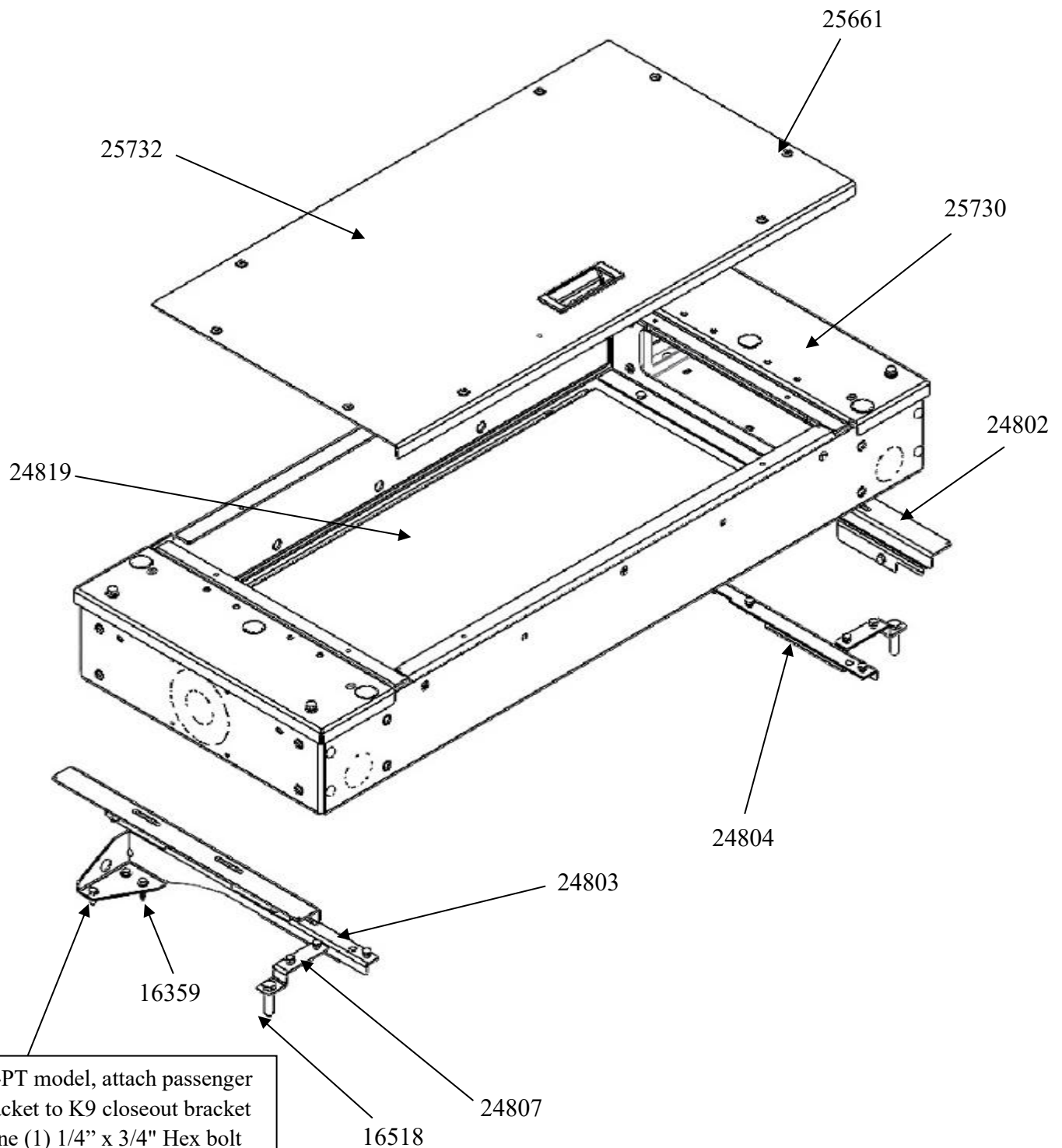
<u>QTY</u>	<u>DESCRIPTION</u>	<u>ITEM#</u>	
1	Main Box assembly	25730	
1	Lid – Full size	25732	
2	Rear Floor Bracket	24807	
2	Side top trim bracket	24802	
1	DS Front Floor Bracket	24803	
1	PS Front Floor Bracket	24804	
16	1/4 Star washer	16148	
16	1/4" x 3/4" Hex bolt	16326	
6	1" Hole plug	15803	
8	1/4" x 5/8" Button head screw	25661	
1	1/4-20 Serrated nut	16013	
4	1/4 x 3/4 HH SEMS	16359	
1	Equipment mounting tray (removable)	24819	included in main box
4	8-32 x 1/2" Machine screw	16378	for removable tray
4	# 8 Flat washer	16119	for removable tray

Always!

- Read all instructions before installing any Havis, Inc. products.
- Use hardware provided with install kit

**C-TTP-TAH-104
Assembly**

Front of
vehicle



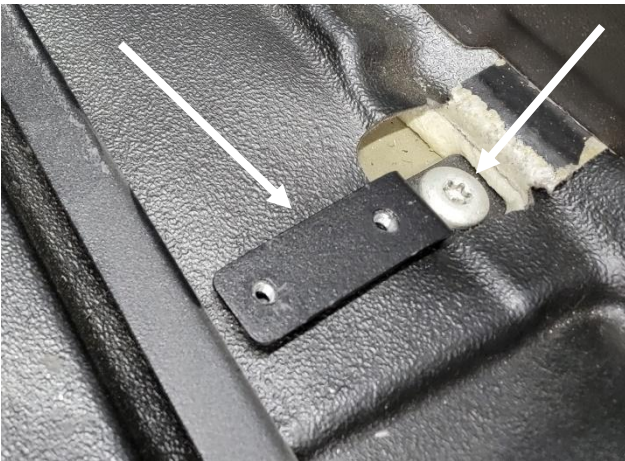
For K9-PT model, attach passenger side bracket to K9 closeout bracket with one (1) 1/4" x 3/4" Hex bolt and serrated nut. 16326 and 16013



With K9-C26-XL or -PT installed, place driver and passenger side front floor brackets into vehicle.



Attach each front floor bracket to 1/4 x 3/4 bolts in K9 rear closeout bracket. Also attach to pre-drilled holes with two (2) 1/4 x 3/4 self-threading screws. **For K9-PT model, attach passenger side bracket with one (1) 1/4" x 3/4" Hex bolt and serrated nut.**



Locate OEM rear floor seat belt anchor bolts.
Loosely attach rear floor brackets to OEM rear seat belt anchors on each side with existing OEM 12mm Torx bolts.



Place main box assembly onto brackets and attach with (10) 1/4" x 3/4" Hex bolts and star washers. Mount equipment onto removable tray as desired.



Tighten floor bracket hardware.
Attach side top trim brackets with 1/4" x 3/4" Hex bolts and star washers.



Attach lid with 1/4" x 5/8" Button head screws.
Installation complete.