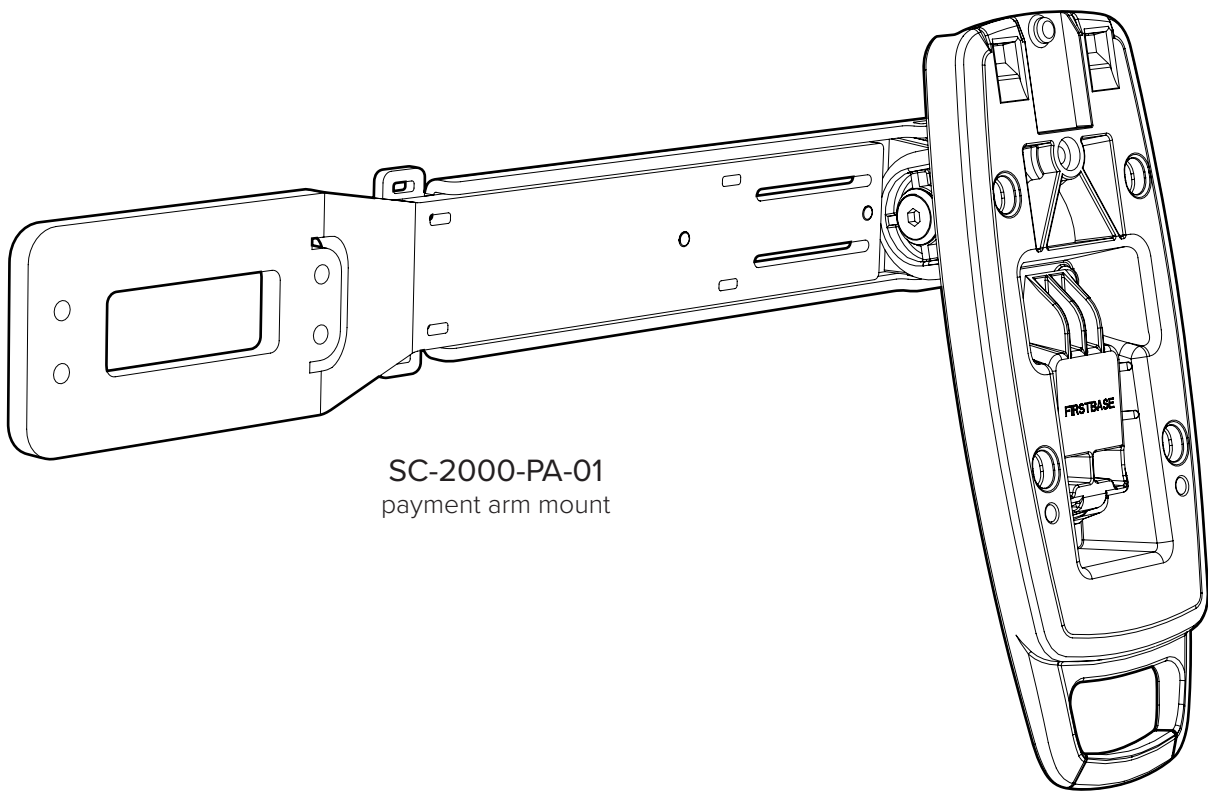




# SC-2000

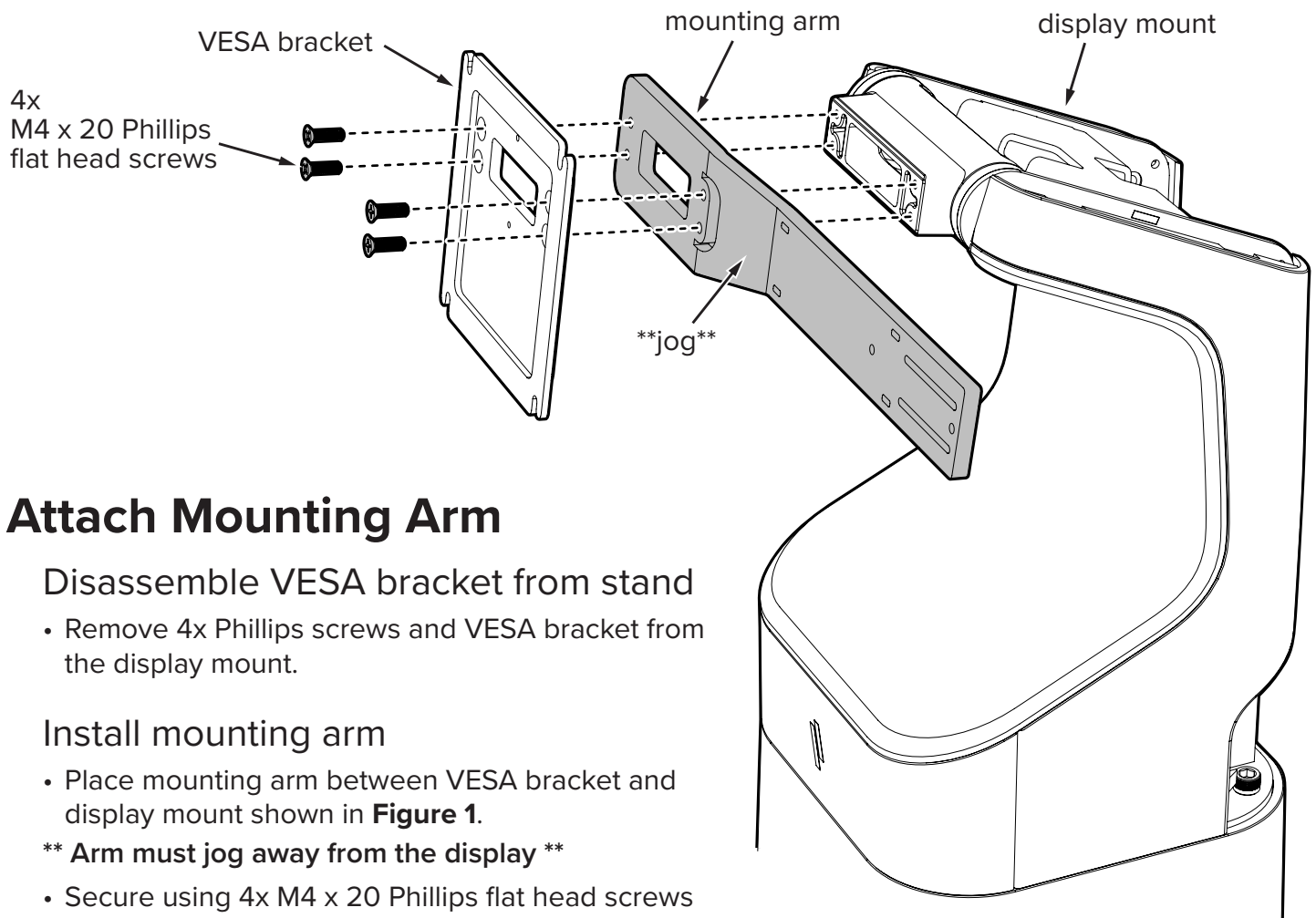
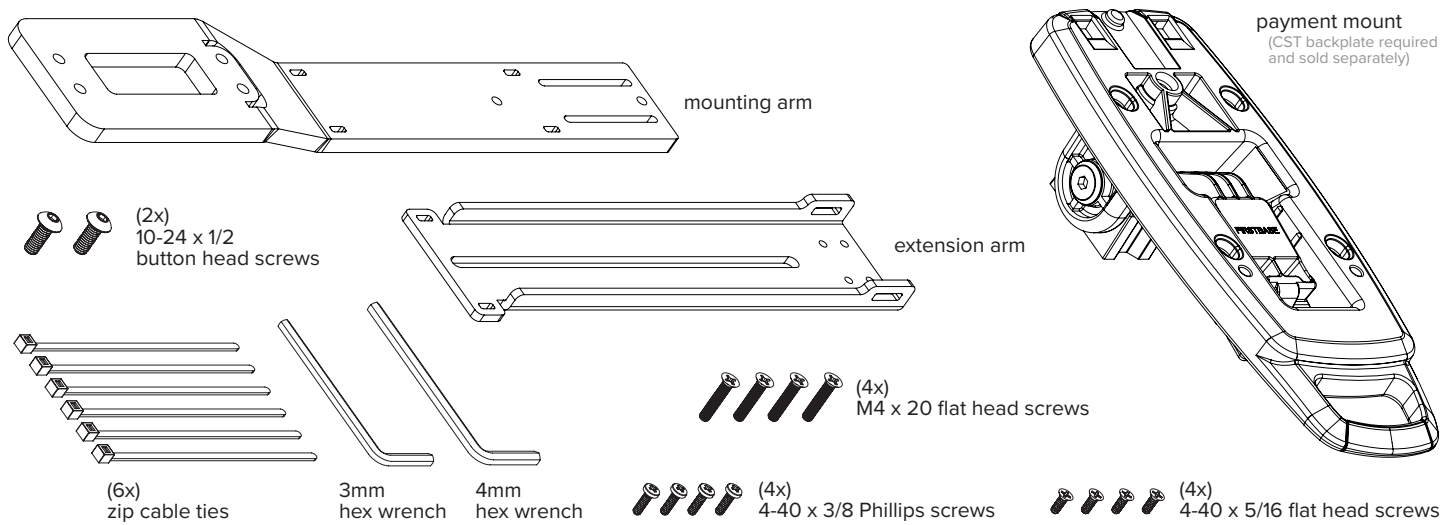
## Payment Arm Mount Accessory



SC-2000-PA-01  
payment arm mount

# Opening the Box

To ensure you have everything required to properly install the SC-2000, open the package and verify that all the components are included.



## Attach Mounting Arm

Disassemble VESA bracket from stand

- Remove 4x Phillips screws and VESA bracket from the display mount.

Install mounting arm

- Place mounting arm between VESA bracket and display mount shown in **Figure 1**.

**\*\* Arm must jog away from the display \*\***

- Secure using 4x M4 x 20 Phillips flat head screws

**\*\* DO NOT OVER-TIGHTEN SCREWS \*\***

**Figure 1**

# Configuring the Display and Payment Mounting

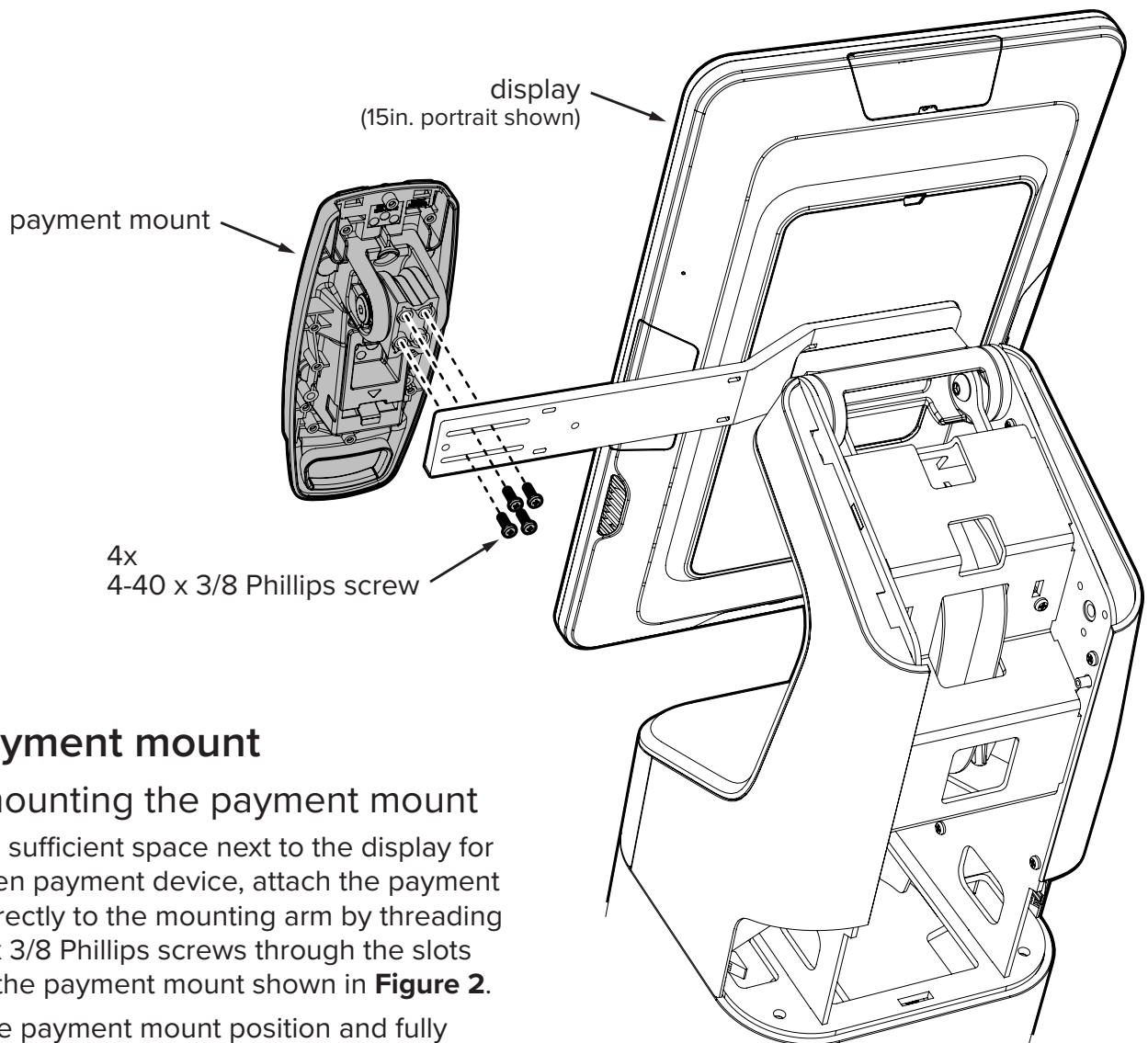
The SC-2000-PA-01 is configurable and adjustable for varying payment device sizes and varying sizes and orientation of displays.



**WARNING** It is the responsibility of the installer to ensure the mounting structure has the capability to support the fully loaded stand and all other equipment when in use.

## Install display onto the SC-2000 product

Determine the orientation (portrait or landscape) of the display that is needed and complete the installation using the instructions for the SC-2000 product being used.



## Install payment mount

### Direct mounting the payment mount

- If there is sufficient space next to the display for the chosen payment device, attach the payment mount directly to the mounting arm by threading 4x 4-40 x 3/8 Phillips screws through the slots and into the payment mount shown in **Figure 2**.
- Adjust the payment mount position and fully tighten the screws.

**\*\* If there is not enough room for the payment device next to the screen, move to the step of “Mounting with the extension arm.”**

**Figure 2**

## Payment Mounting (cont.)

The SC-2000-PA-01 is configurable and adjustable for varying display and payment device sizes and orientations and is capable of freestanding with additional tip safety built into the design.

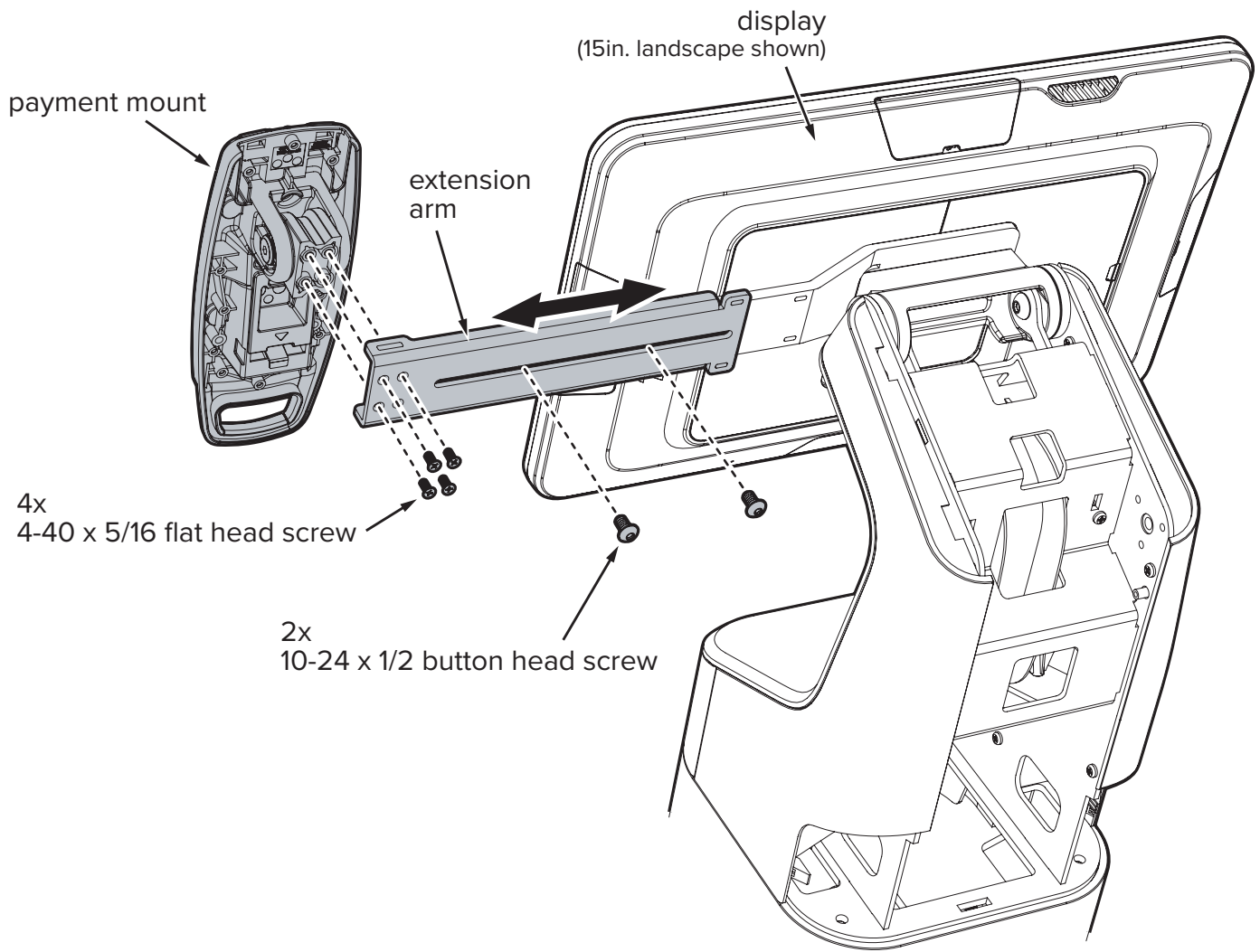


**WARNING** It is the responsibility of the installer to ensure the mounting structure has the capability to support the fully loaded stand and all other equipment when in use.

### Mounting with the extension arm

- For larger displays, and displays in landscape orientation, the extension arm should be used.
- Fit the extension arm over the mounting arm and install 2x 10-24 x 1/2 button head screws as shown in **Figure 3**.
- Install 4x 4-40 x 5/16 flat head screws through extension arm into payment mount.
- Using the provided 3mm hex key, adjust the extension arm to its desired position and tighten the button head screws.

**\*\* DO NOT OVER-TIGHTEN SCREWS \*\***



**Figure 3**

# Cable Routing and Mounting the Device

The payment arm accessory has dedicated features to help with properly managing cables and secure them during the product's use. It is the responsibility of the installer to assure that cables are managed in a way that will not cause harm to the users or damage to the devices or product(s).

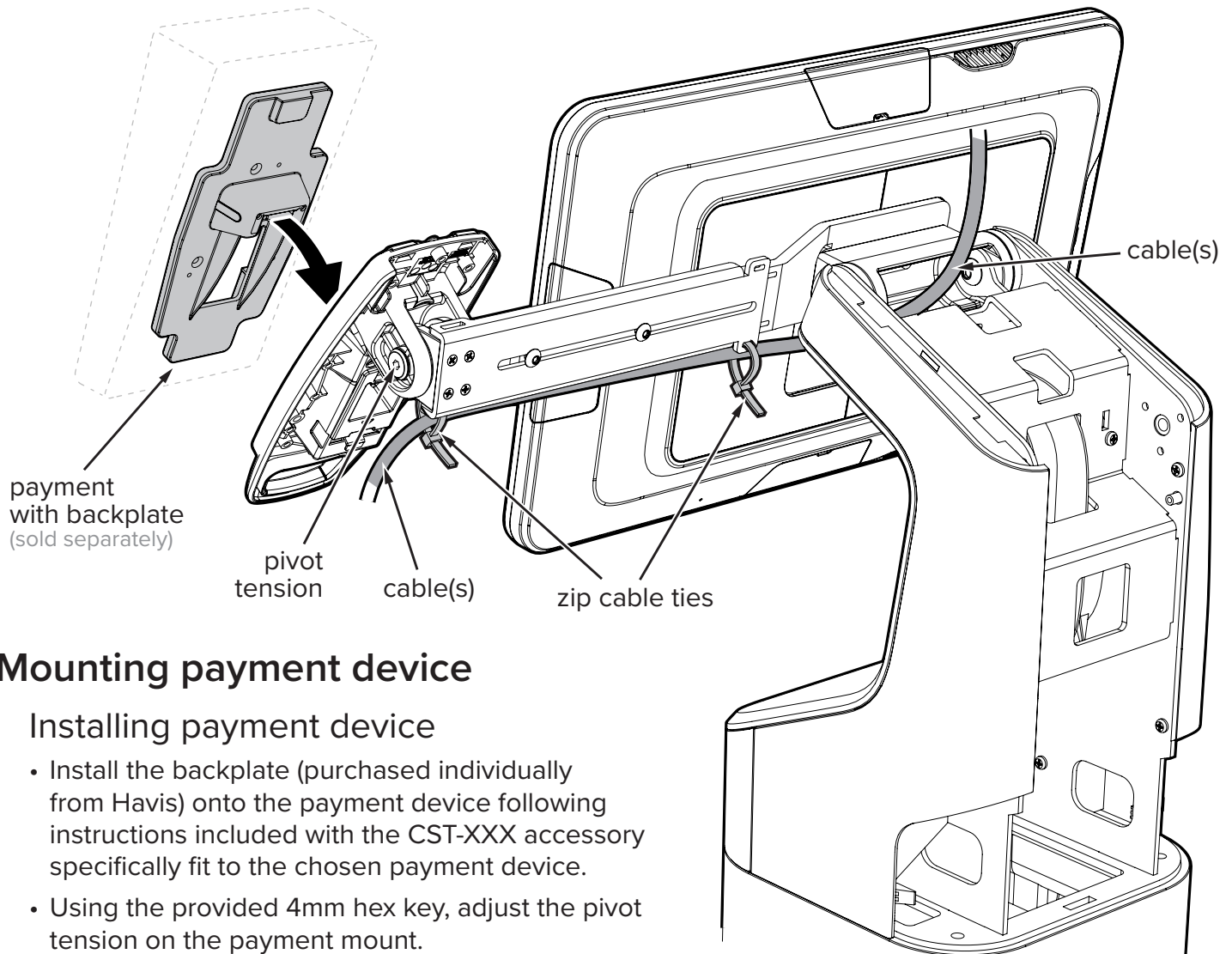


**CAUTION** Making sure cables are not pinched during full use of the system is vital for safety and the prolonged use of the stand and the installed equipment.

## Cable management

### Managing cables across arm

- Insert at least 2x included zip cable ties into any selected slot positions shown in **Figure 4** and make a large hoop making sure to leave space for the amount of needed cables.
- Pass all cables through the created loops from the zip ties across the arm from the payment device and into the stand through the underside passage.
- Once all cables are routed, tightly pull the zip ties closed and trim any excess length.



**Figure 4**

## Mounting payment device

### Installing payment device

- Install the backplate (purchased individually from Havis) onto the payment device following instructions included with the CST-XXX accessory specifically fit to the chosen payment device.
- Using the provided 4mm hex key, adjust the pivot tension on the payment mount.