

## INSTALLATION INSTRUCTIONS C-VS-0820-BLZR-EV

### Vehicle Specific Console for 2024-2025 Chevrolet Blazer EV

#### TOOLS REQUIRED:

Phillips Screw Driver  
Trim tool kit

Standard and Metric Socket Set  
Wire cutter and crimper

T-20 Torx Bit

#### **PARTS and MOUNTING HARDWARE:**

<u>QTY</u>	<u>DESCRIPTION</u>	<u>PART#</u>
2	Speaker Cover	23047
1	Bin / Phone holder	26638
1	Bin liner	26689
1	USB Bracket	38475
1	USB Block-off Plate	42446
1	Driver side/Left side trim panel	38225
1	Passenger side/Right side trim panel	38226
1	Front cross plate	38227
1	Wire harness bracket	41842
1	Fuse block bracket	40134
1	1/4" Hex nut kit (12 total)	25520
2	10mm Hex screw	39775
1	Aluminum spacer 1.125"	39776
1	Nylon spacer 1.5"	39777
10	#8 – 3/8 torx screw	13405
2	Light plug wire harness	13852
5	1/4-20 Hex flange serrated nut	16013
2	M6 – 1 Flange nut	16076
7	1/4 Flat washer	16122
1	3/8 Flat washer	16127
2	1/4 Lock washer	16142
5	1/4-20 x 3/4 Screw	16326
4	#10-32 x 1/2 Pan head phillips screw	16399
2	#8-18 x 3/8 Flat head phillips screw	16425
1	8mm Hex Screw	16509

#### **NOTE:**

**Vehicle trim levels with OEM console installed require additional purchase of Chevrolet Air Duct**

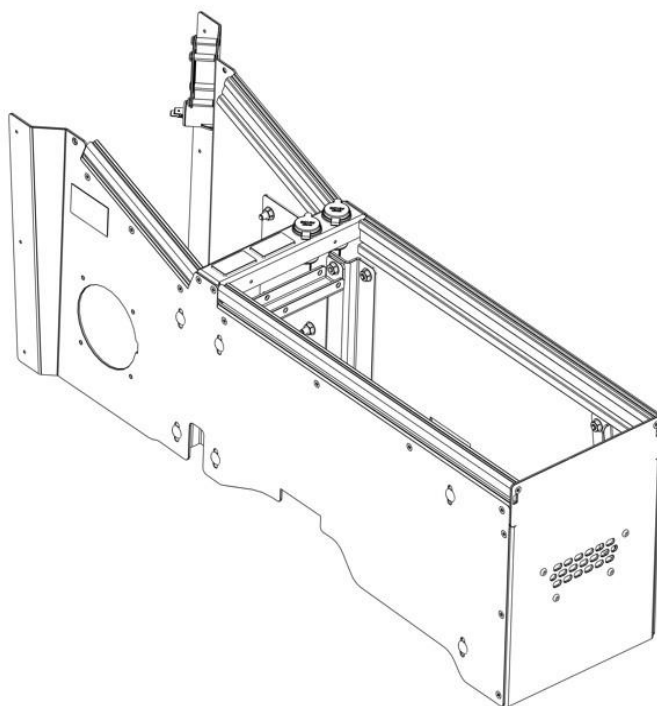
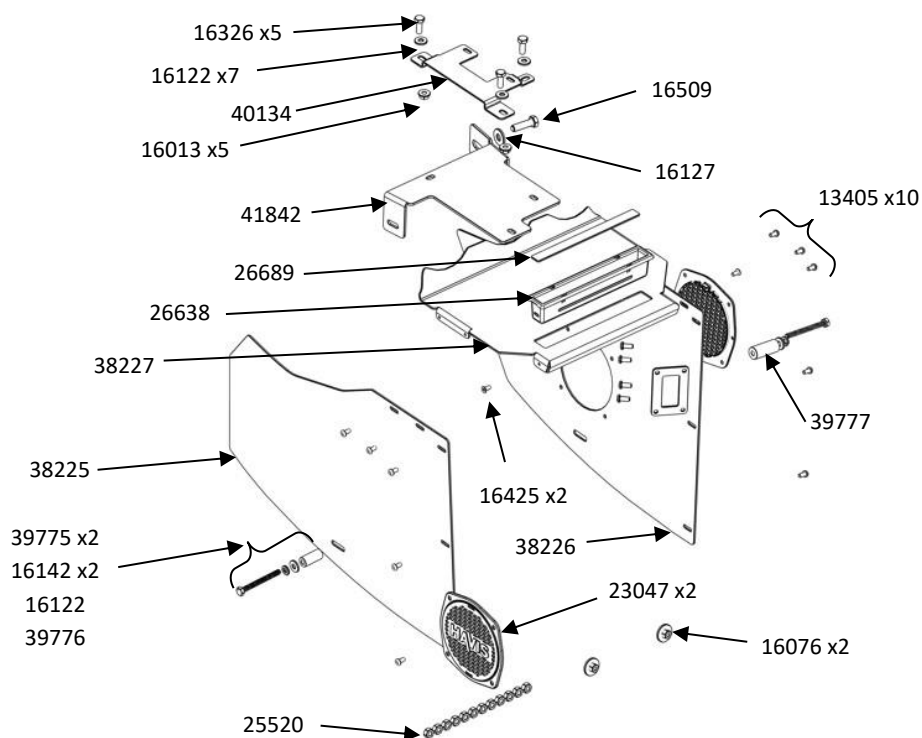
- **GM Part ID: 26401329**

**2025 Blazer EV PPV and later, OEM USB and OEM USB wiring harness must be purchased separately**

- **GM USB Part ID: 527865004**
- **GM USB Wire Harness Part ID: 86592838**

#### **Always!**

- Read all instructions before installing any Havis, Inc. products.
- **Check for obstructions (Wires, brake lines, fuel tank, etc.) before drilling any holes!**
  - Use hardware provided with install kit





Blazer EV with OEM console



Start by removing OEM console - Keep and reuse OEM hardware after removal



Fully remove side trim panel from OEM console – Repeat on passenger side



Remove additional OEM hardware



Remove OEM hardware at rear of center console – repeat on both sides



After all bolts (8 in total) are removed and wire harnesses are disconnected, carefully remove OEM console



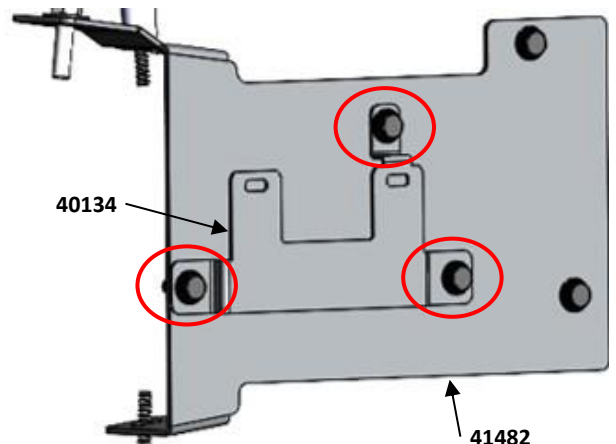
In 'console delete' version remove plastic tunnel mount cover – keep and reuse hardware



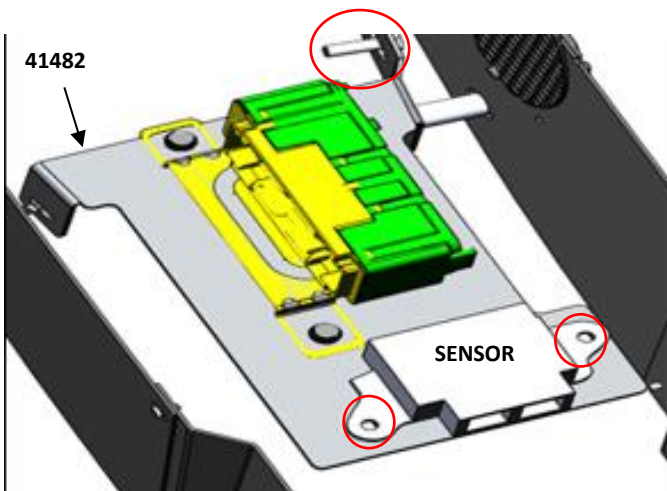
In console delete model remove fuse block from OEM bracket – after removal, use Havis brackets and remount



Models with OEM console remove fuse block and remount using Havis brackets (40134) and (41842)

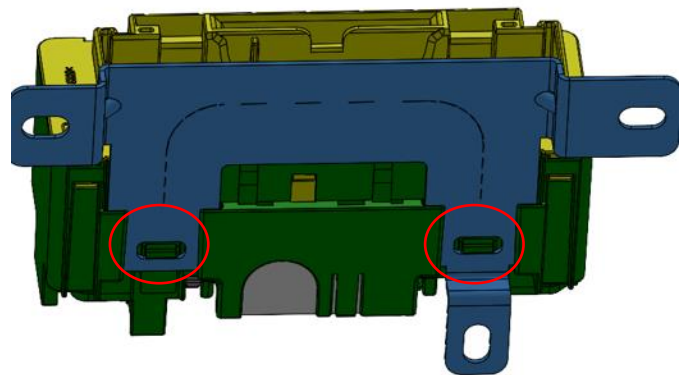


Attach fuse block bracket (40134) to wire harness bracket (41842) using  $\frac{1}{4}$ -20x3/4 screws, flat washer, and flange nuts

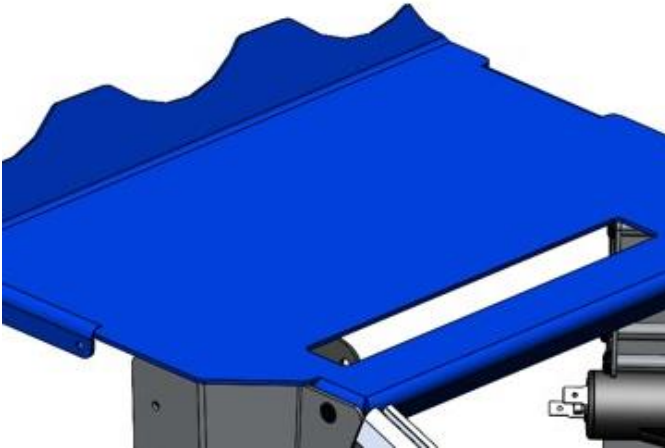


Use OEM bolt to mount wire harness bracket (41842)

In console included models relocate keyless entry sensor using  $\frac{1}{4}$ -20x3/4 screws, flat washer, and flange nuts



Fuse block will clip into bracket (40134)

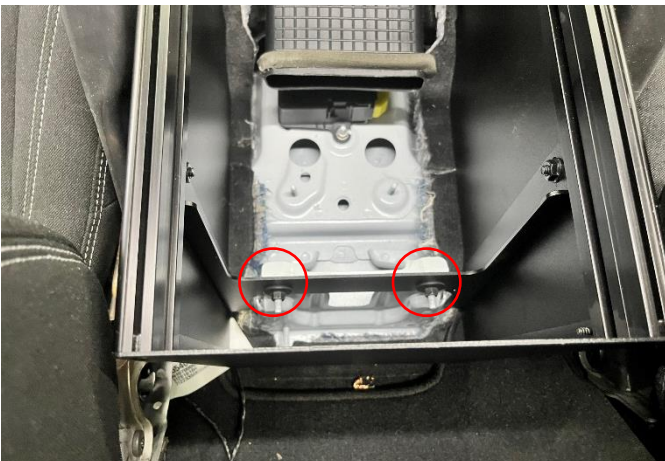


Attach front cross plate (38227) with flat head #8 screws



In console version relocate OEM USB using (38475) and (4) (16399) #10-32 x1/2 PH screws

In console delete model use cover plate (42446)



Attach rear mounting bracket to GM studs using two M6 Flange nuts



Attach front mounting bracket to GM studs using two OEM screws – see next picture for placement



Attach front mounting bracket to GM studs using two OEM screws – repeat both sides



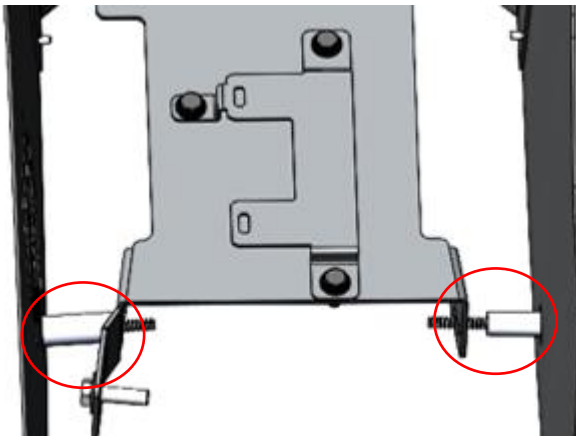
Install trim plates using torx screws and insert M6 x 65mm screw thru M6 split lock washer, then thru M6 flat washer, then thru side panel, then thru 1.5" long **Nylon** spacer



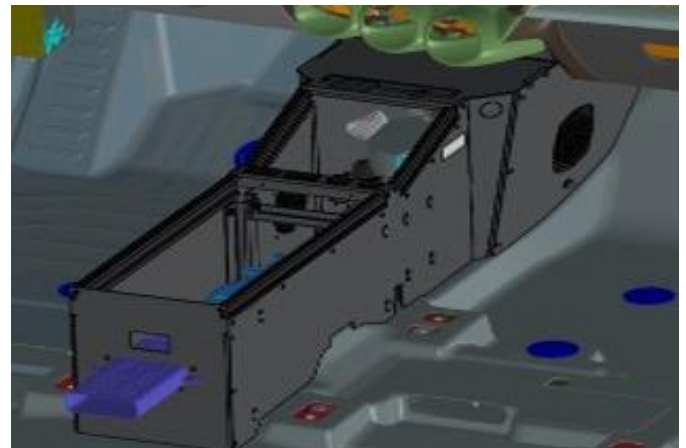
View behind the trim panel on Passenger side



Install DS trim plate using torx screws and insert M6 x 65mm screw thru M6 split lock washer, then thru M6 flat washer, then thru side panel, then thru 1.125" long **Aluminum** spacer

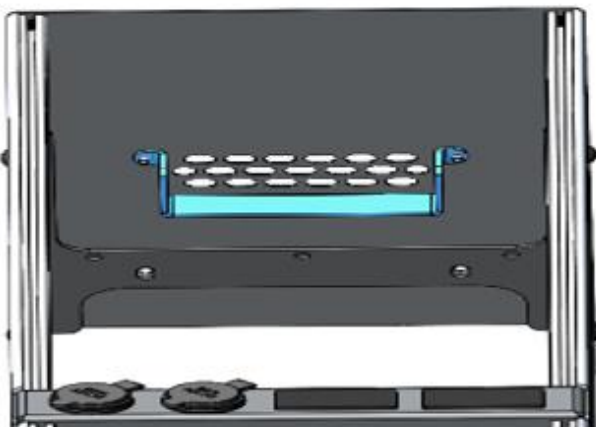


View of spacers behind the trim plates.  
Use **Aluminum** spacer on DS and a **Nylon** spacer on PS



In console delete model cut ducting to size.  
In console model cut ducting and connect using

**GM part: 26401329**



Match up the end of the OEM ducting to bracket attached to rear panel



Plug in all modules and fully tighten hardware