

INSTALLATION INSTRUCTIONS

C-DMM-3026 Flip up Dash Monitor Mount

2023-2025 Ford F-250, 350, 450, 550 and F-600 with Standard Radio

*****Does NOT work with OEM top center dash speaker.***

OEM top Tray must be removed and not used. **

TOOLS REQUIRED:

| | | |
|----------------|-------------------------|-------------------------|
| Ratchet Wrench | Dash panel removal tool | Open End Wrench - 7/16" |
| Socket Set | Phillips screwdriver | Plastic cutting tool |

MOUNTING BRACKETS and HARDWARE:

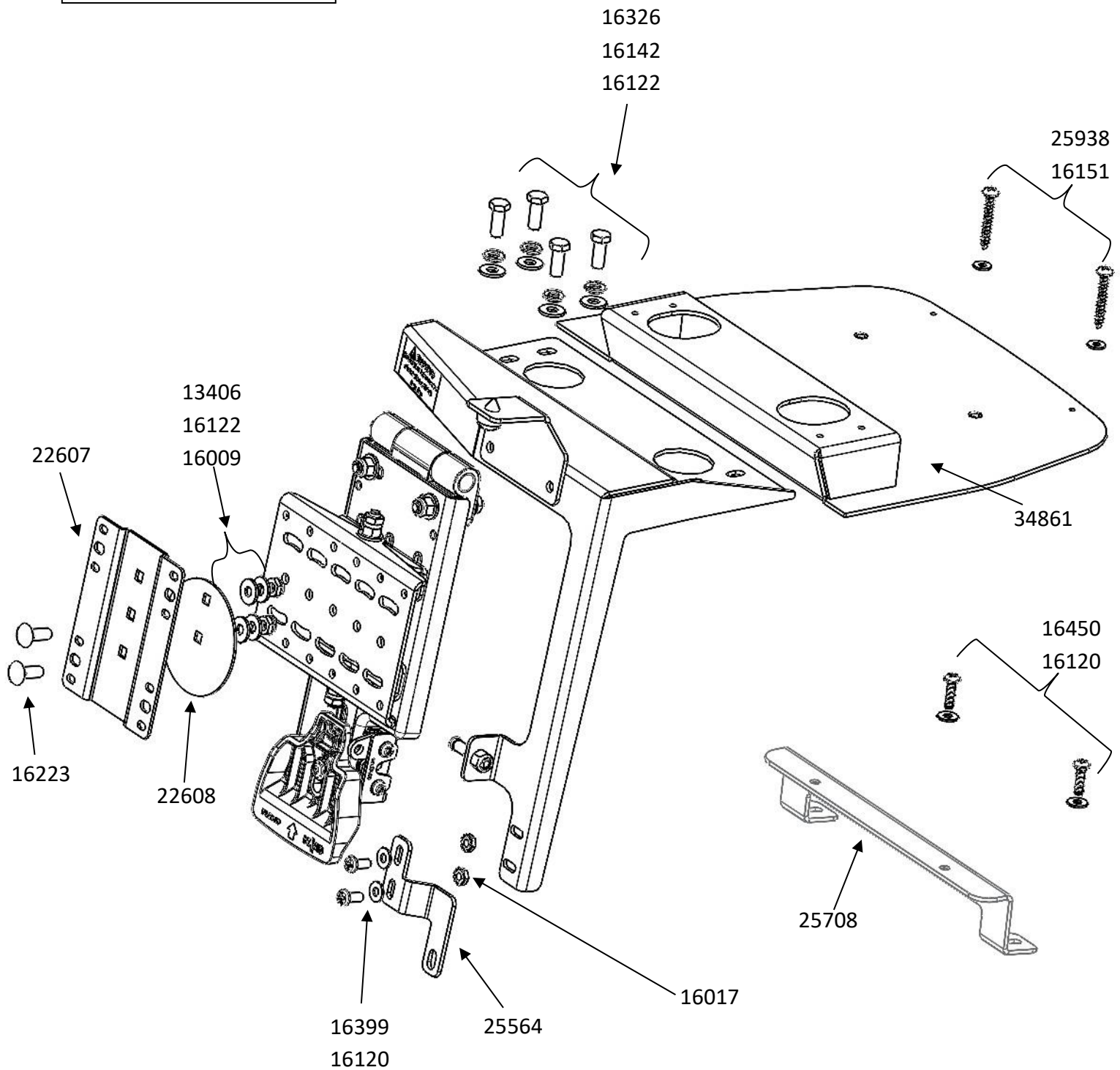
| <u>QTY</u> | <u>DESCRIPTION</u> | <u>PART#</u> |
|------------|--------------------------------|--------------|
| 1 | Upper DMM mounting tray | 34861 |
| 1 | Lower mounting tab | 25564 |
| 1 | XL trim upper mounting bracket | 25708 |
| 2 | #8 x 1.5" Pan Head screw | 25938 |
| 2 | 10-32 Keps nut | 16017 |
| 4 | #10 Flat washer | 16120 |
| 6 | 1/4" Flat washer | 16122 |
| 4 | 1/4" Lock washer | 16142 |
| 2 | #8 Flat washer | 16151 |
| 4 | 1/4" x 3/4" Hex head bolt | 16326 |
| 2 | 10-32 x 1/2" Machine screw | 16399 |
| 2 | 10-32 x 3/4" Machine screws | 16450 |
| 2 | 1/4-20 x 3/4" Carriage bolt | 16223 |
| 1 | PVC Spacer | 22608 |
| 1 | VESA 75 Swivel adaptor | 22607 |
| 2 | 1/16" Nylon Washer | 13406 |
| 2 | 1/4-20 Nyloc low profile nut | 16009 |

Always!

- Read all instructions before installing any Havis, Inc. products.
- Use hardware provided with install kit

C-DMM-3026

Assembly





View of F-150 dash prior to install.



Remove (2) 7mm head fasteners at top center dash.



Lift off upper trim panel assembly.
This panel will not be reused.



Remove trim around radio frame.



Unsnap trim around passenger vent assembly.



Unsnap and remove trim.



Remove OEM 7mm head fastener from above 12v socket.



Install lower mounting tab using 7mm fastener.



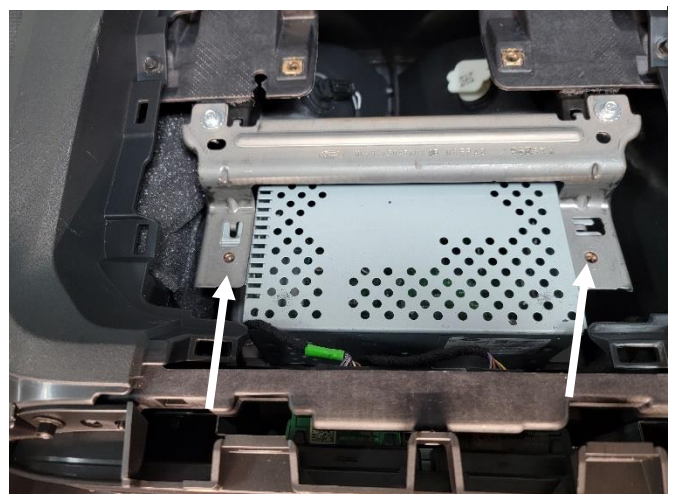
Temporarily reinstall the trim.



Mark location of trim coming into contact with lower mounting tab. Remove trim and cut away material as needed to clear bracket.



Reinstall previously removed trim.



Remove (2) 7mm head fasteners from the upper mounting area.



Install upper mounting bracket using previously removed OEM fasteners.



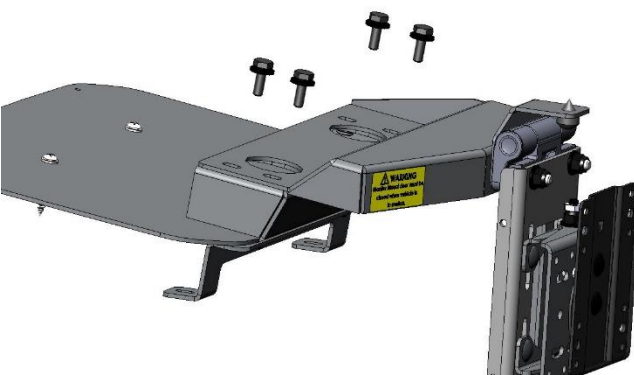
Place upper mounting tray onto dash.



Attach using #8 x 1.5" pan head sheet metal screws in the front with flat washers and 10-32 x 3/4" machine screws in the rear with flat washers



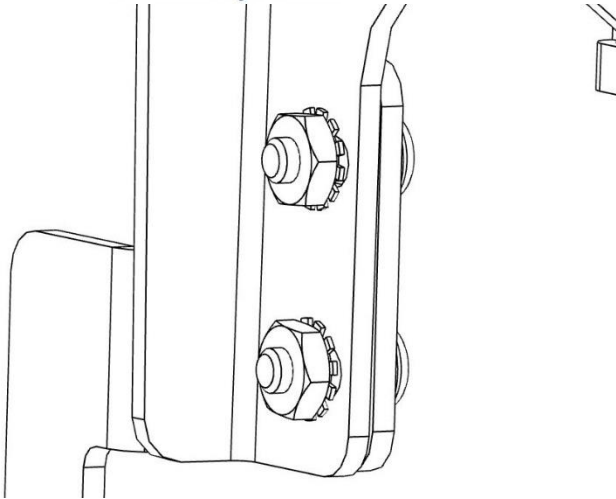
Reinstall previously removed trim around radio.



Attach DMM frame to upper mounting tray using (4) 1/4 x 3/4" bolts, split lock washers and flat washers



Attach frame support arm to lower mounting tab using (2) 10-32 x 1/2" machine screws, keps nuts and flat washers



View of frame and lower mounting tab attached with (2) 10-32 Keps nuts



Position VESA plate on back of Device as desired. Attach VESA plate with carriage bolts to the back of the dock. The gray PVC washer will go between this bracket and the DMM swivel plate.



Determine desired position for your specific computer and attach to DMM swivel plate using 1/4"x 3/4" carriage bolts, PVC spacer, nylon washers, steel washers, and nylock nuts.

Tighten so that the dock rotates smoothly.



Route wiring as needed along the frame of the DMM.



Confirm smooth left / right and up / down operation of the DMM.



Installation is now complete.