

INSTALLATION INSTRUCTIONS

P-FRONT-4 Front Partition with P-MFK-13 Mount kit FOR 2015-2026 FORD TRANSIT STANDARD and LONG WHEELBASE WINDOW / PASSENGER VANS with MEDIUM ROOF

Note: After partition is pre-assembled outside of vehicle, it is recommended to use two (2) people to lift and place partition into the van.

TOOLS REQUIRED:

Power Drill
Drill Bit set

Ratcheting Wrench
Phillips Screw Driver

Standard & Metric Socket Set
7/16" wrench

PARTS & HARDWARE:

QTY	DESCRIPTION	PART#
P-FRONT-4		
1	Main partition center section	HS-PA007746
1	Driver side partition panel	HS-PA007732
1	Passenger side partition panel	HS-PA007733
2	Lock stiffener bracket	KKM01110
24	1/4" Serrated nut	GSM30023
24	1/4"x 3/4" Carriage bolt	GSM32000
P-MFK-13		
2	Stud plate	CM003457
2	Lower support bracket	HS-PA007238
2	Upper roof support bracket	HS-PA007743
1	Driver side polycarbonate filler	HS-PA007777
1	Passenger side polycarbonate filler	HS-PA007778
20	1/4" Serrated nuts	GSM30023
2	1/4" Flat washer	GSM31005
14	1/4" x 3/4" Carriage bolts	GSM32000
2	1/4" x 3/4" Bolt	GSM33001



Always!

- Read all instructions before installing any Havis, Inc. products.
- Check for obstructions (Wires, brake lines, fuel tank, etc.) before drilling any holes!
 - Use hardware provided with install kit

HS-PA007777
Passenger side clear
polycarbonate filler

HS-PA007743
Upper roof bracket

HS-PA007778
Driver side clear
polycarbonate filler

HS-PA003457
Stud Plate

HS-PA007238
Lower support bracket

HS-PA007746
Main Partition
Center section

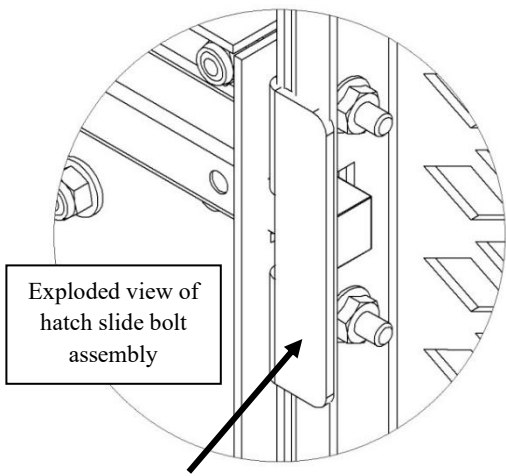
HS-PA007238
Lower support bracket

HS-PA007733
Passenger partition panel

HS-PA007732
Driver partition panel

Front of Vehicle

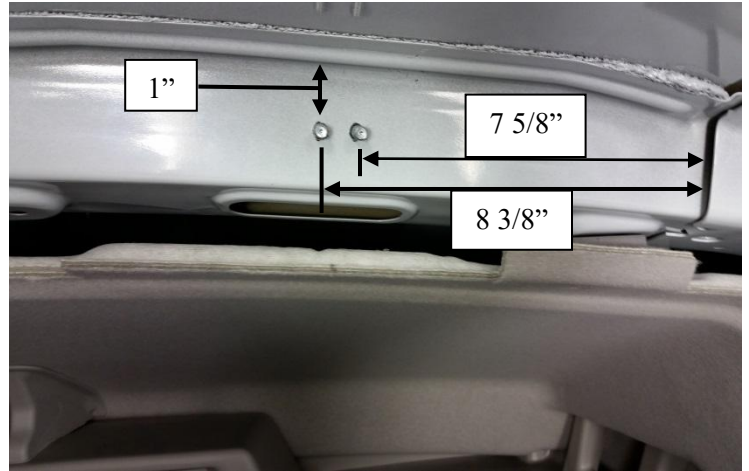
NOTE:
*Using 1/4"x 3/4"
carriage bolts and
serrated nuts provided,
assembly of the partition
side panels to the main
center partition is
required before
installation.*



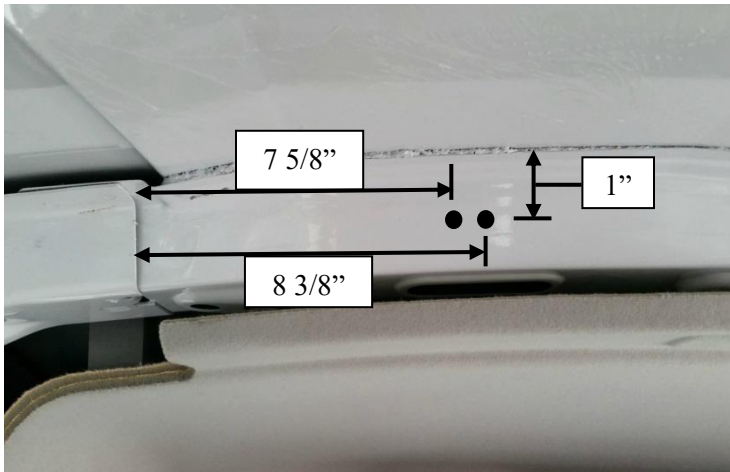
*Make sure to install the
emergency exit hatch slide
bolt reinforcement brackets
when attaching the partition
side panels to the main
partition center section.*



Remove middle section of headliner to expose the cross support rib over the front seats.



Mark and drill two (2) holes as shown with a 9/32" drill bit. Both holes measure 1" down from the top of the rib. Measure across from cross support seam 7 5/8" and 8 3/8".



Repeat process for driver's side.



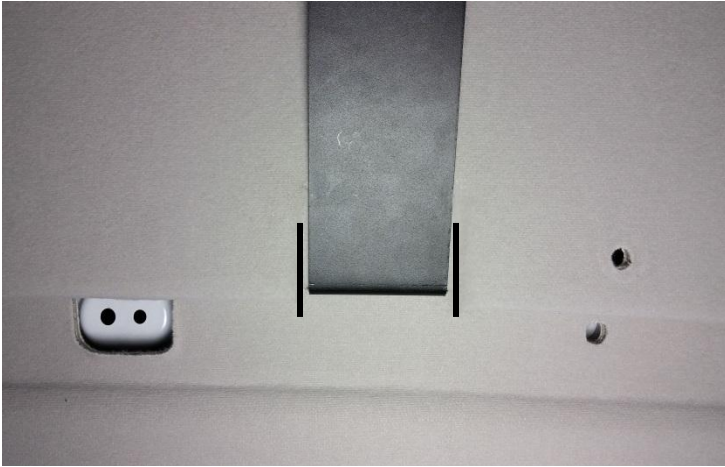
Place stud plate (CM003457) into holes up through the large opening in the rib with the studs facing rearward.



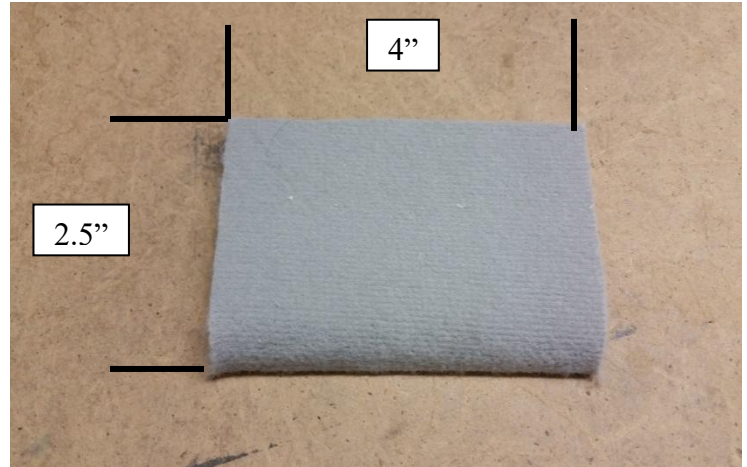
Attach Upper roof bracket to stud plate using two (2) 1/4" serrated nuts (GSM30023)



Repeat process for other side. Tighten hardware

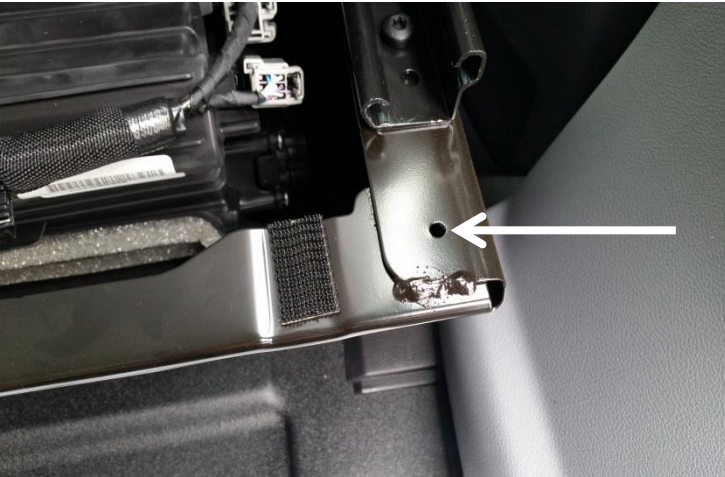


Loosely press headliner up to the bracket and mark around the bracket.



Remove the headliner and cut a section for bracket clearance approximately 4" x 2.5".

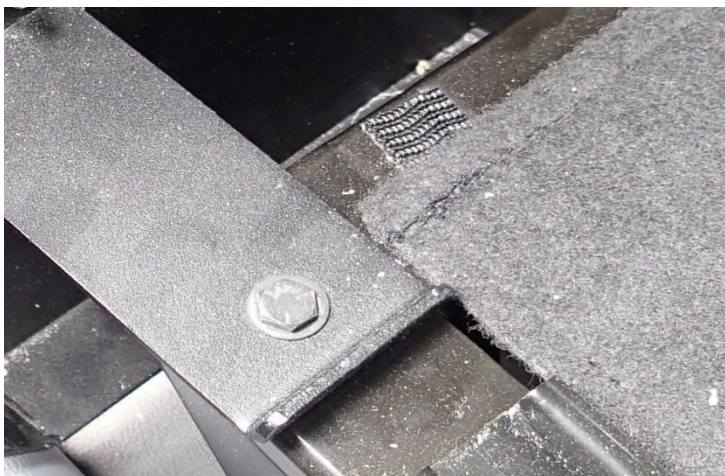
Repeat for both sides. Reinstall headliner.



Slide front passenger seat forward and remove cover under seat. Drill out the existing outboard hole in seat base to 1/4"



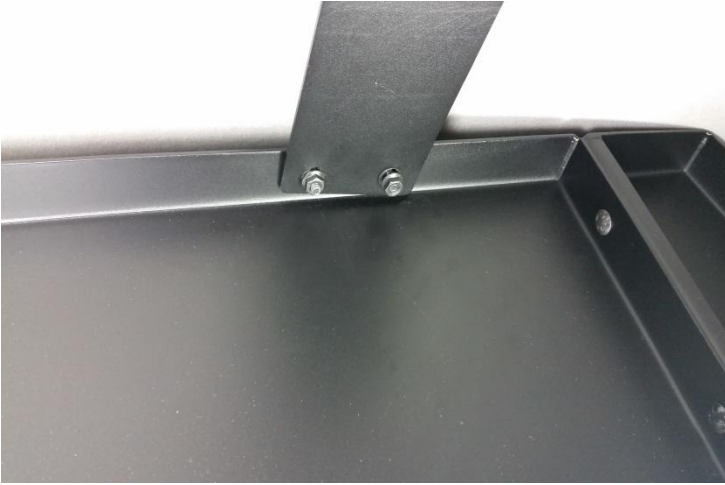
Repeat process on front driver's side seat base.



Attach lower support brackets (CM007238) to pre-drilled holes in seat base using 1/4"x 3/4" hex bolts, 1/4" washers, and nuts. (one on each side)



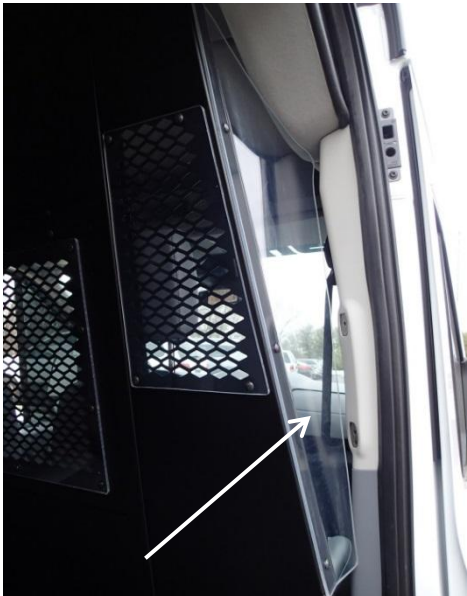
Slide partition in through the side door and prop into position. Attach to the lower support brackets using two (2) 1/4"x 3/4" carriage bolts and 1/4" nuts.



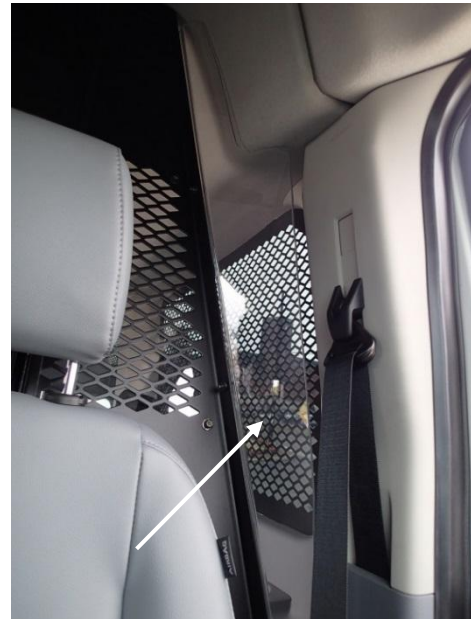
Attach partition to upper roof brackets using two (2) 1/4" x 3/4" carriage bolts and serrated nuts.



Repeat process for other side.



Remove OEM grab handle from passenger side "B" pillar.
Attach passenger side clear polycarbonate side filler to partition frame using 1/4"x 3/4" bolts, washers and nuts.



Repeat process for driver's side.
(View from front)



Installation complete.