

INSTALLATION INSTRUCTIONS WGI-F20

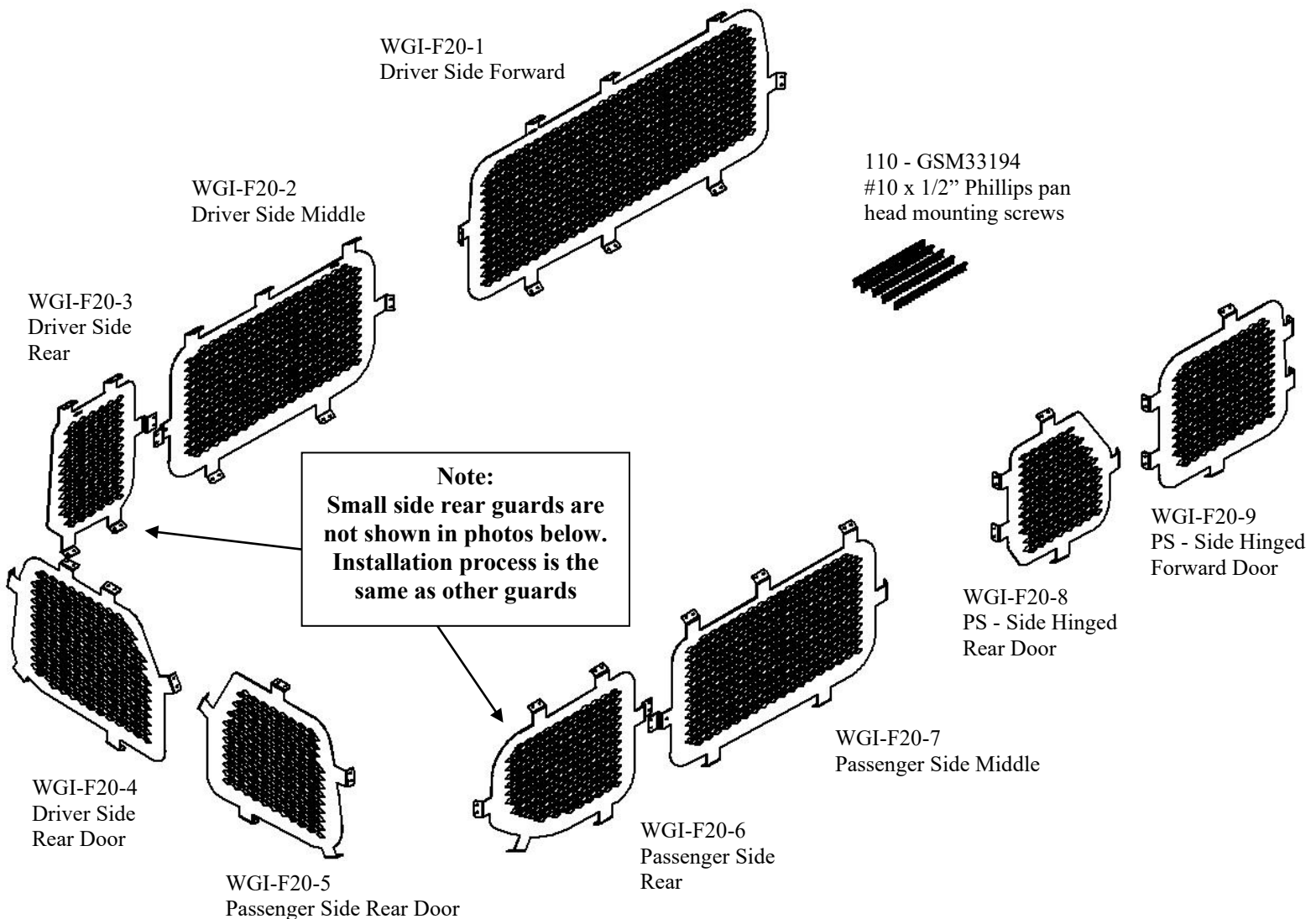
INTERIOR WINDOW GUARDS

For 2020 -2026 FORD TRANSIT WINDOW VAN (WAGON) with
LOW ROOF, LONG LENGTH 148"INCH WHEEL BASE
and **SIDE SWING OUT DOORS**

TOOLS REQUIRED:

Power Drill	Ratcheting Wrench
1/8" Drill Bit	T-50 Torx Bit (for seat belts)
Phillips Screw Driver	Plastic Cutting Tool (utility knife or tin snips)
Metric Socket Set	Hook style and Straight pick tools

WGI-F20 PARTS INCLUDED:



Always!

- Read all instructions before installing any Havis, Inc. products.
- Check for obstructions (Wires, brake lines, fuel tank, etc.) before drilling any holes!
- Use hardware provided with install kit



Remove the rear seats out of the van. Start by grabbing the seat release with a long hook style pick tool.



When the latch is hooked, simply pull up to release the latch.



The latch will relock itself once you let go. Use another pick tool or small screwdriver to keep the latch released while you release the other side.



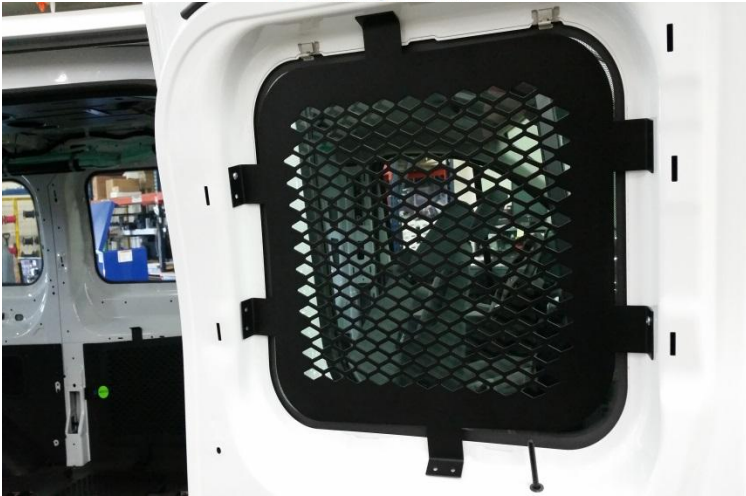
When both latches are released push the seat forward to remove. The front is hooked and will need to be slid rearwards.



Carefully remove the vans interior panels including the door panels.



Removing the headliner is recommended but not required. Removing the headliner will be required if installing a Middle Partition.



Determine location of each guard. Place guard up to the window frame, mark and pre drill mount holes with a 1/8" drill bit.
(Slight bending of the tabs may be necessary to ensure a proper fit)



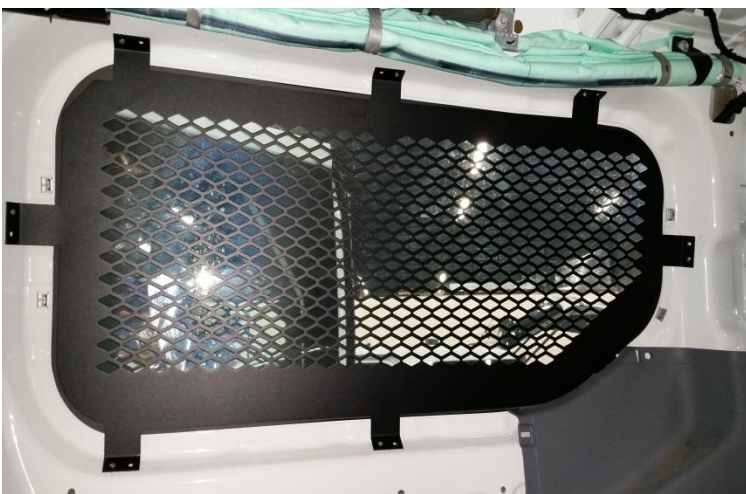
Attach screen to door using #10 x 1/2" screws
(GSM33194)



Follow same process for all doors



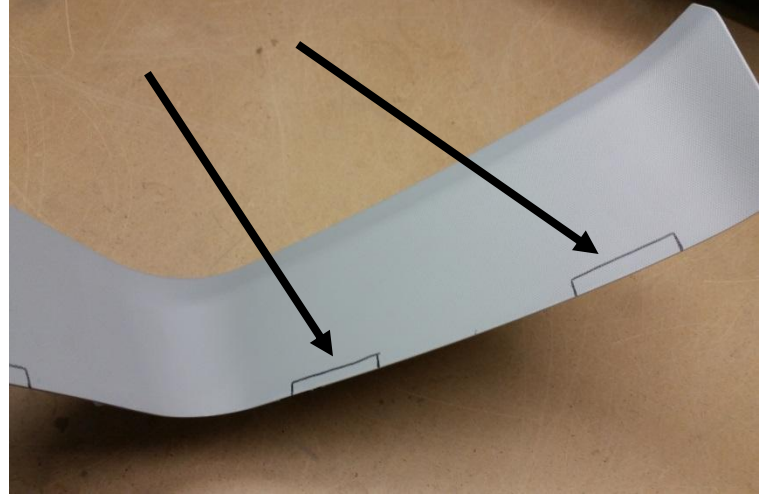
Follow same process for all doors



When hanging screens on the larger windows it is helpful to mark and pre drill only a few holes to start.

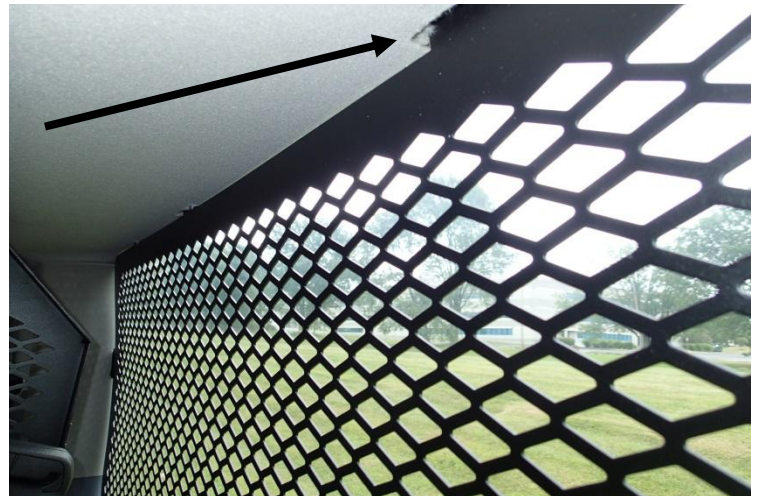


Hang the screen with only a few screws and then mark and drill the remaining mounting holes.



When all guards are hung, begin to loosely place the trim panels back on the van. Mark the trim on either side of the mounting tabs for notching.

Draw a line between the points to help with maintaining a straight cut. Remove (notch) plastic from the panel as needed for mounting tab clearance.



When reinstalling the trim, additional notching may be necessary. Cut as needed.

The headliner will need to notch around the tabs so that it sits properly above the screens.



Completed trim and headliner installation

Reinstall seats, Installation is now complete.