

INSTALLATION INSTRUCTIONS C-VSW-0824-SILV

Vehicle Specific Console for 2024 Chevrolet Silverado EV

TOOLS REQUIRED:

Phillips Screw Driver
Trim tool kit

Standard and Metric Socket Set
Wire cutter and crimper

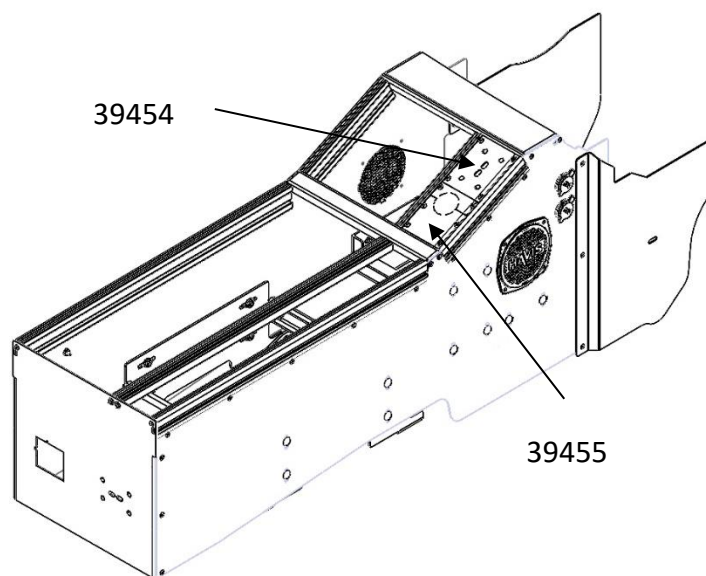
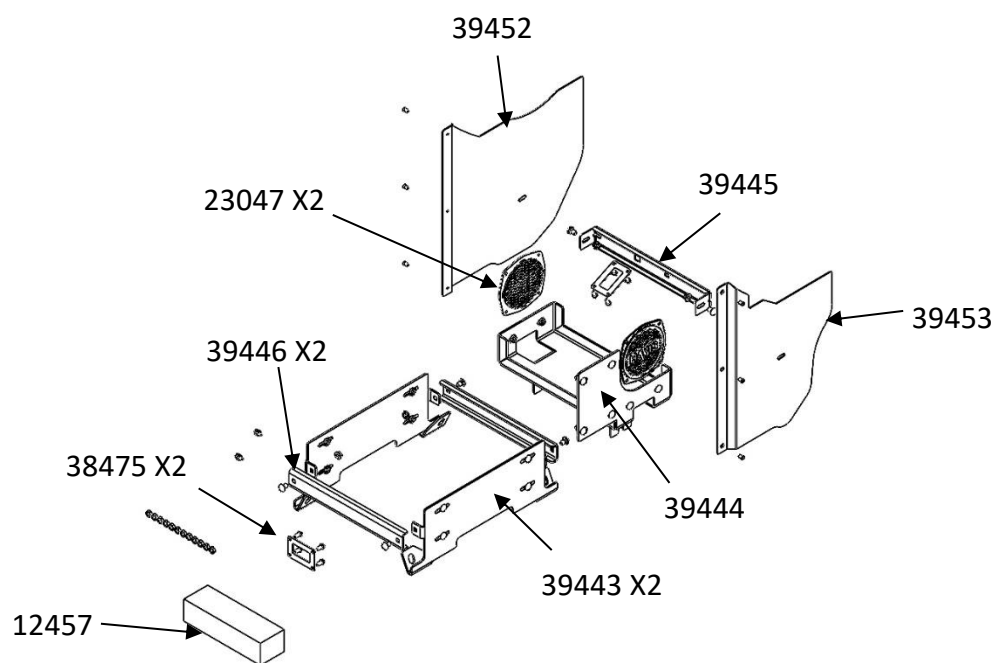
T-20 Torx Bit

PARTS and MOUNTING HARDWARE:

<u>QTY</u>	<u>DESCRIPTION</u>	<u>PART#</u>
2	Speaker grill	23047
1	Foam block	12457
1	1/4" Hex nut kit (12 total)	25520
1	Pole knockout filler panel	39455
1	USB Filler panel	39454
2	USB Bracket	38475
1	Front mounting bracket	39445
1	Tunnel/Middle mount bracket	39444
2	Rear mount bracket	39443
2	Cross brace for rear mount bracket	39446
1	Driver side/Left side trim panel	39452
1	Passenger side/Right side trim panel	39453
22	1/4-20 Hex flange serrated nut	16013
2	#10-32 Keps nuts	16017
18	1/4-20 x 1/2 Carriage bolt	16222
4	1/4-20 x 3/4 Carriage bolt	16223
10	#10-32 x 1/2 Pan head phillips screw	16399
6	#8-18 x 3/8 Flat head phillips screw	16425

Always!

- Read all instructions before installing any Havis, Inc. products.
- **Check for obstructions (Wires, brake lines, fuel tank, etc.) before drilling any holes!**
 - Use hardware provided with install kit





OEM console



Start by removing side panels and bolt (10 mm) from OEM console - Repeat for passenger side



Side Panel is now removed
Remove OEM bolts – Repeat for passenger side of console



Remove rear console bolts – Repeat for passenger side of console



Disconnect wire harnesses under dash before removing OEM console completely
***NOTE – You will need to relocate and reattach OEM harness**



Loosely assemble rear mounting brackets (2) (39443) and (2) (39446) using carriage bolts (16222) and serrated nuts (16013)



Fit loosely assembled mounting brackets over OEM mounting points circled in red



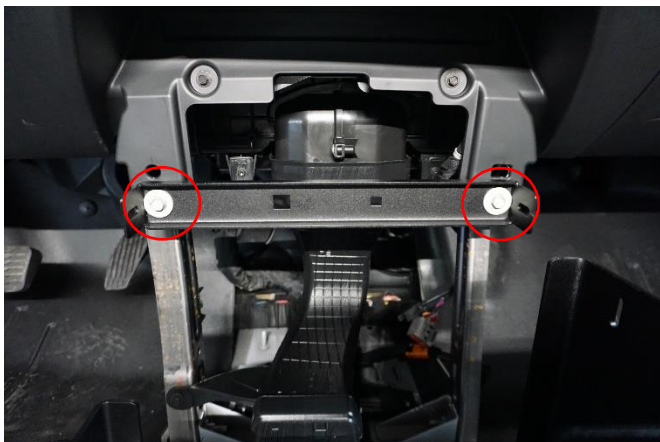
Use previously removed (4 total) OEM bolts to mount brackets – Then go back and tighten bracket hardware (16222 and 16013)



Position tunnel/middle bracket (39444) in place



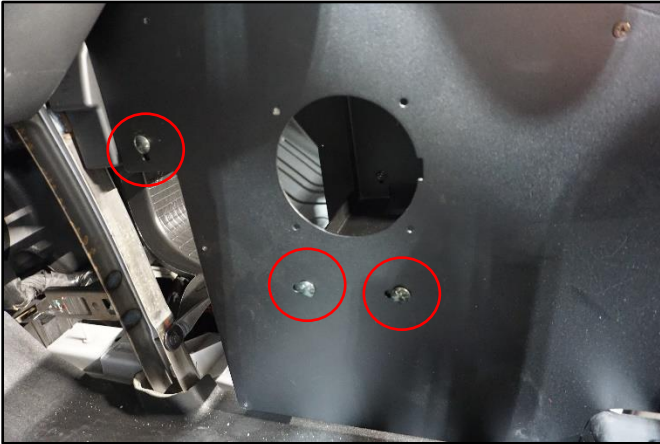
Use previously removed OEM bolts and loosely attach bracket (39444)



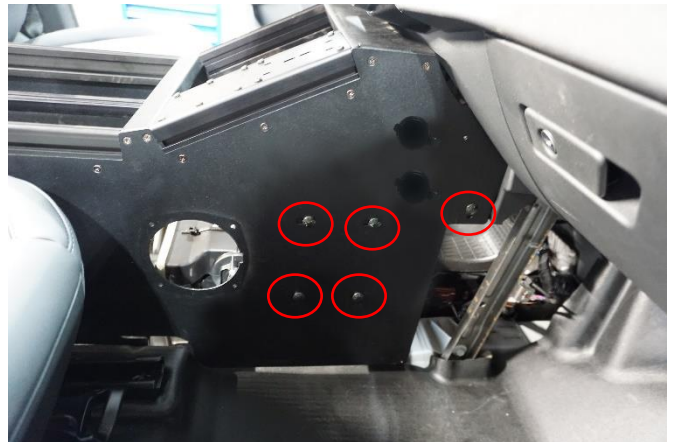
Use (2) previously removed OEM bolts and loosely attach bracket (39445) under the dash



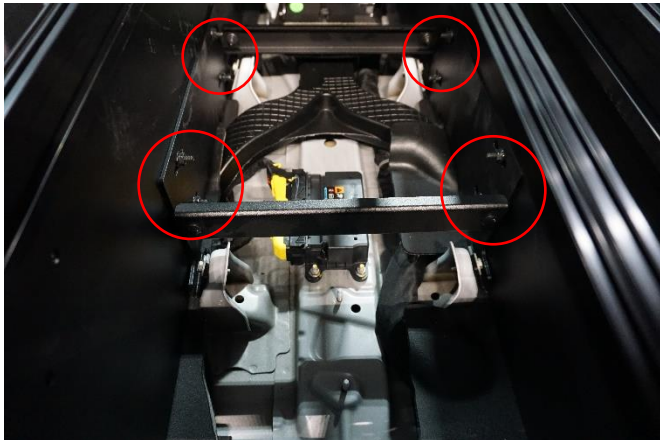
Drop your Havis console over mounting brackets



Once aligned use (3) carriage bolts (16222) and nuts (16013) to attach console to middle bracket (39444) and front bracket (39445)



Repeat on passenger side with 5 carriage bolts (16222) and nuts (16013)



Attach console to previously installed rear mounting brackets using (8) carriage bolts (16222) and (8) nuts (16013)



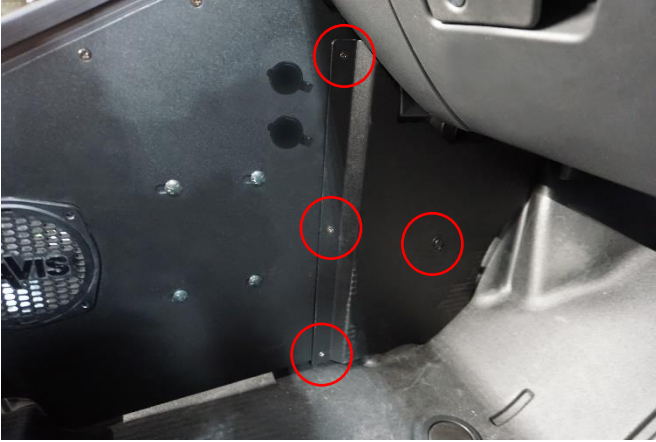
Install trim panel (39452) to the driver side. 3 screws will attach to the console and 1 will mount



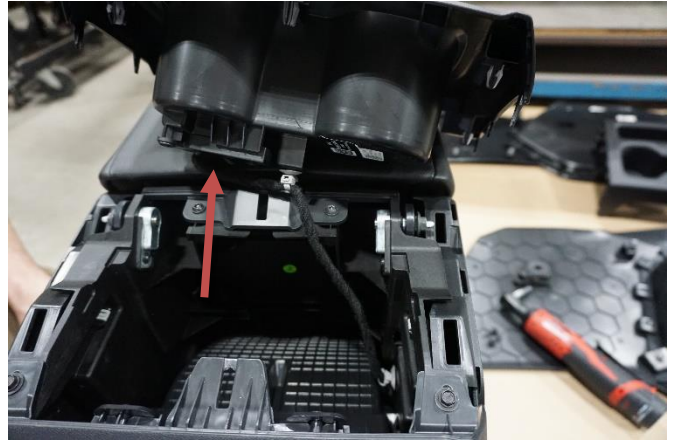
Install trim panel (39452) to the driver side. 3 screws (16425) will attach to the console and 1 will mount to OEM slot (see previous picture)



Repeat on the passenger side



Install trim panel (39453) to the passenger side. (3) screws (16425) will attach to the console and (1) will mount to OEM slot (see previous picture)



Remove Key Sensor from under OEM rear cup holder



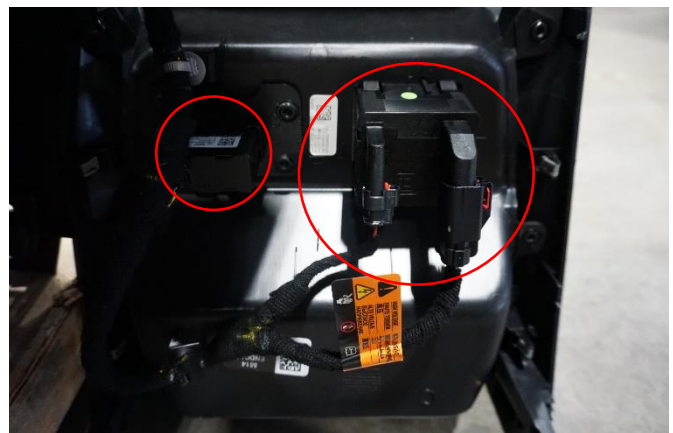
Relocated OEM Key Sensor to the rear driver side panel using (2) (16399) and (16017)



Disconnect remaining harnesses and second key sensor



Relocate key sensor to front mounting bracket (39445)



Disconnect USB and 12V socket from OEM console



Relocate 12V socket and USB module to rear of console. Use bracket 38475 and (4) 16399 screws to relocate USB



Relocate previously removed USB to the 3.3" wide section using plate 39454, bracket 38475, and (4) 16399 screws



USB RELOCATION:

Using bracket 38475 and (4) 16399 screws



Plug in all modules and fully tighten hardware