

Owner's Manual Havis Docking Station For Zebra ET8X 12" Tablet w/ Rugged Frame



DS-ZEB-400 Series

DS-ZEB-401

DS-ZEB-401-3

DS-ZEB-402

DS-ZEB-402-3

DS-ZEB-403



DS-ZEB 400 SERIES_OMN_09-24

Before Beginning

Havis is pleased to provide this Owner's Manual to aid in the proper installation and use of the DS-ZEB-400 Series Docking Station for the Zebra ET8X 12" Tablet with Rugged Frame.

For questions regarding the set-up of your DS-ZEB-400 Series Docking Station, please contact Havis at 1-800-524-9900 or visit www.havis.com for additional product support and information.

WARNING

- NEVER STOW OR MOUNT THE DOCKING STATION DIRECTLY IN A VEHICLE AIRBAG DEPLOYMENT ZONE.
- DO NOT USE THE COMPUTER WHILE DRIVING.
- DO NOT PLACE METAL OBJECTS OR CONTAINERS OF LIQUID ON TOP OF THE DOCKING STATION.
- IF A MALFUNCTION OCCURS, IMMEDIATELY UNPLUG THE POWER SUPPLY AND REMOVE THE TABLET

CAUTION

- READ ALL INSTRUCTIONS THOROUGHLY BEFORE BEGINNING INSTALLATION.
- DO NOT STORE, INSTALL, OR OPERATE THIS PRODUCT WHERE DUST, WATER,
- THIS PRODUCT IS NOT CLASSIFIED WITH AN IP RATING. DO NOT STORE, INSTALL, OR OPERATE THE DOCKING STATION WHERE WATER, MOISTURE, STEAM, DUST, ETC. ARE PRESENT
- FOR THE DS-ZEB-401, DS-ZEB-401-3, DS-ZEB-402, DS-ZEB-402-3, DOCKING STATIONS: DO NOT CONNECT DIRECTLY TO VEHICLE VOLTAGE SOURCE: This product requires a certified, automotive grade, Havis approved power supply with a 12 V power output, such as the LPS-189, or an appropriate isolated power supply such as the LPS-190 or LPS-191. Failure to comply with this requirement will cause product damage that is NOT repairable and is NOT covered under warranty.
- USE ONLY THE SPECIFIED POWER SUPPLY CABLE WITH THIS DOCKING STATION
- DO NOT CONNECT CABLES INTO PORTS OTHER THAN WHAT THEY ARE SPECIFIED FOR.
- DO NOT LEAVE THE DOCKING STATION IN A HIGH TEMPERATURE ENVIRONMENT (GREATER THAN 70°C, 158°F) FOR A LONG PERIOD OF TIME.
- THE DS-ZEB-400 SERIES DOCKING STATION IS ONLY COMPATIBLE WITH THE Zebra ET8X 12" TABLET EQUIPPED WITH THE RUGGED FRAME INSTALLED.

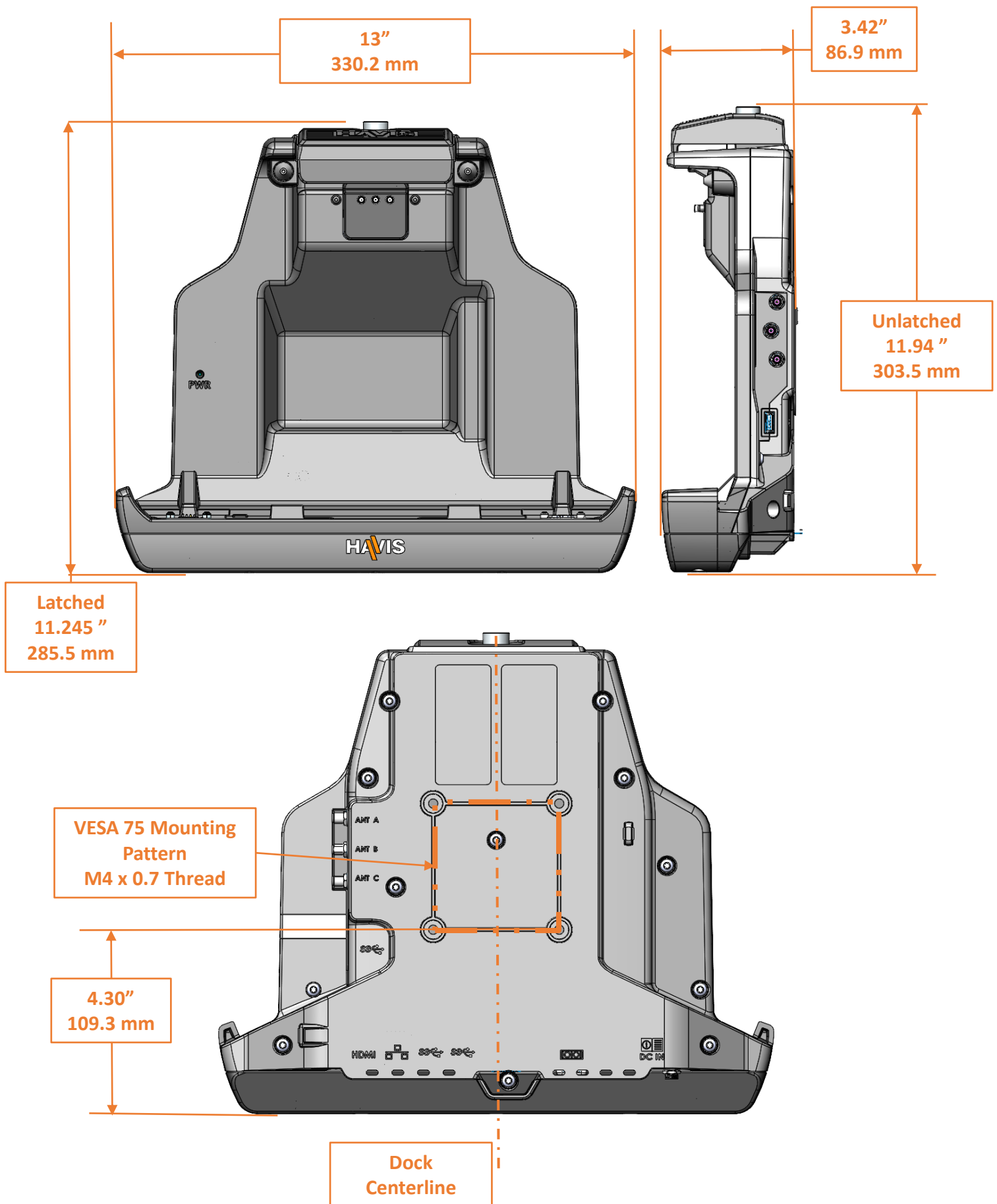
DS-ZEB-400 Series Specifications

DS-ZEB-400 Series	
Dimensions	11.25" (28.57cm) H x 13" (33.0 cm) W x 3.42" (8.69 cm) D
Weight	2.86 lbs. (1.3 kg)

	DS-ZEB-400 SERIES DOCK	ZEBRA ET8X 12" TABLET
Operating Environment	-20° C to 60° C (-4° F to 140° F)	-20° C to 60° C (-4° F to 140° F)
Storage Environment	-30° C to 70° C (-22° F to 158° F)	-30° C to 70° C (-22° F to 158° F)

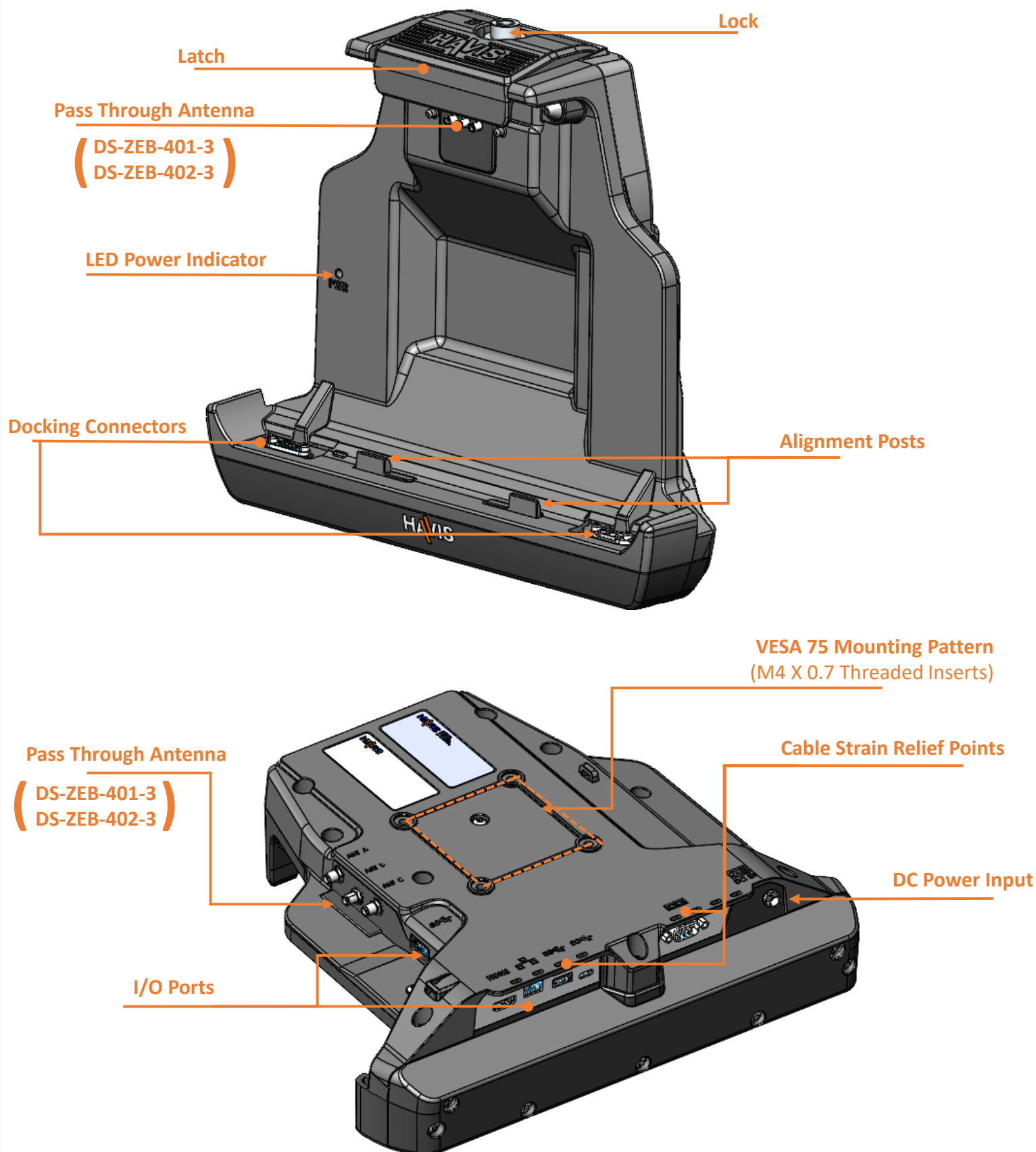
Configuration	Description	Power Options	Dock Voltage Requirement
DS-ZEB-401	Standard Electronics	External Power Supply	12 VDC NOM
DS-ZEB-401-3	Standard Electronics, with Pass Thru Antenna	External Power Supply	12 VDC NOM
DS-ZEB-402	Advanced Electronics	External Power Supply	12 VDC NOM
DS-ZEB-402-3	Advanced Electronics, with Pass Thru Antenna	External Power Supply	12 VDC NOM
DS-ZEB-403	Cradle (no electronics)	None	None

DS-ZEB-400 Series Specifications



Parts Included

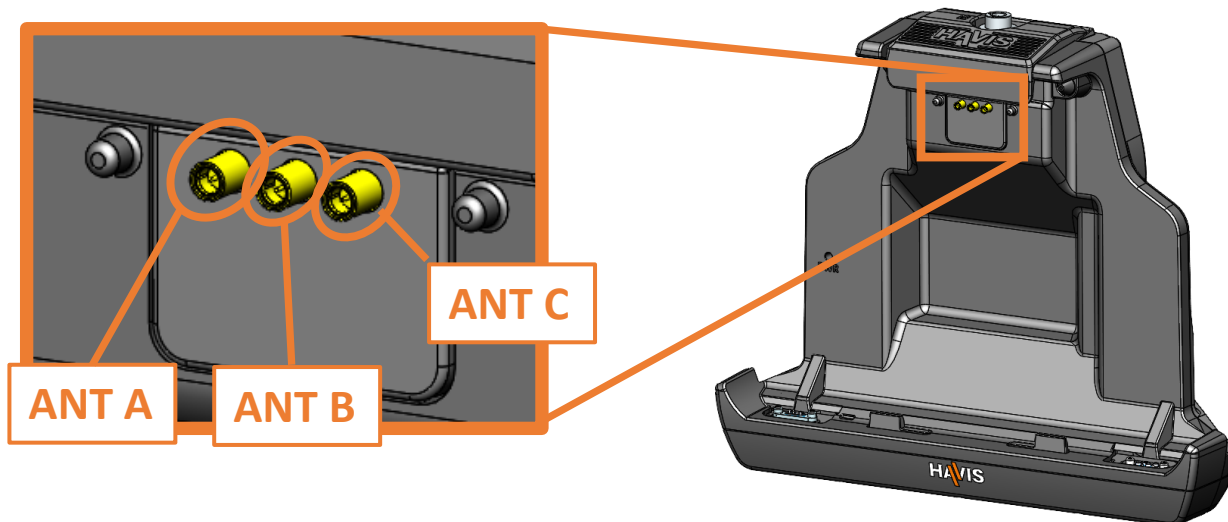
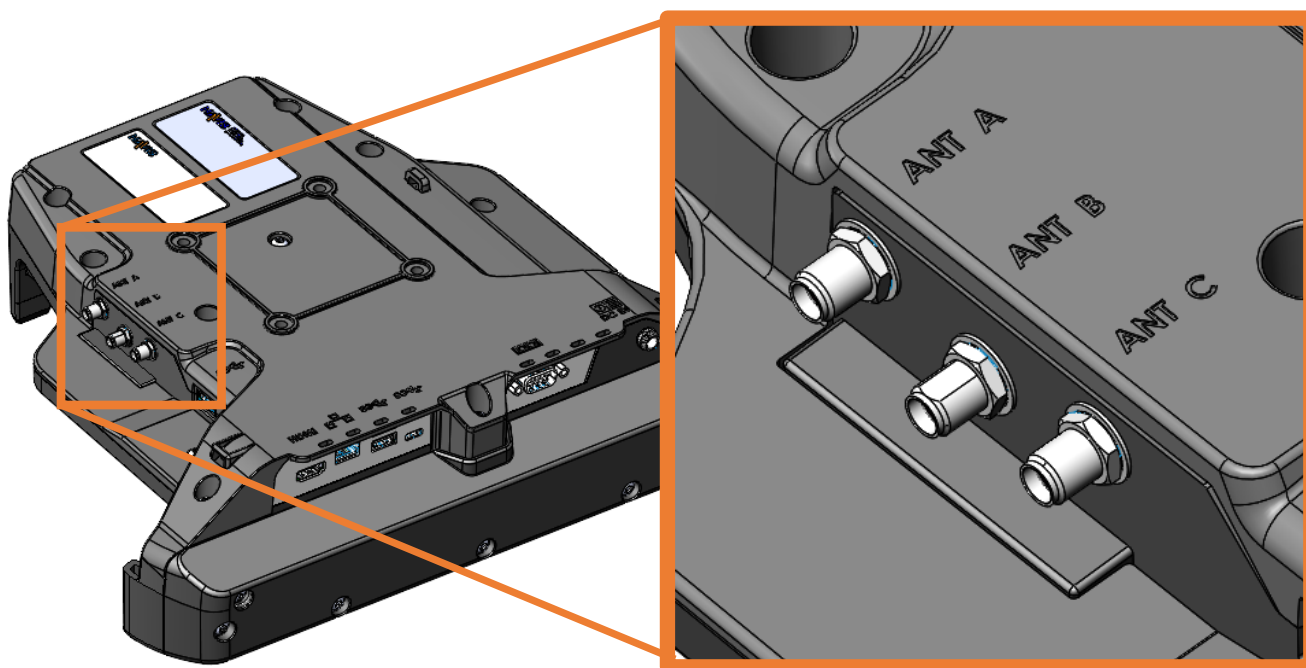
Docking Station



Antenna Designation (DS-ZEB-401-3, DS-ZEB-402-3)

HAVIS Dock Antenna	Zebra ET8XX- XXXXX-XX0	Zebra ET8XX- XXXXX-XXA	Zebra ET8XX- XXXXX-XXB (5G SKU)	Zebra ET8XX- XXXXX-XXC (4G SKU)
ANT A	NONE	NONE	WWAN	WWAN
ANT B	NONE	NONE	GPS	GPS
ANT C	NONE	WIFI	WWAN	WIFI

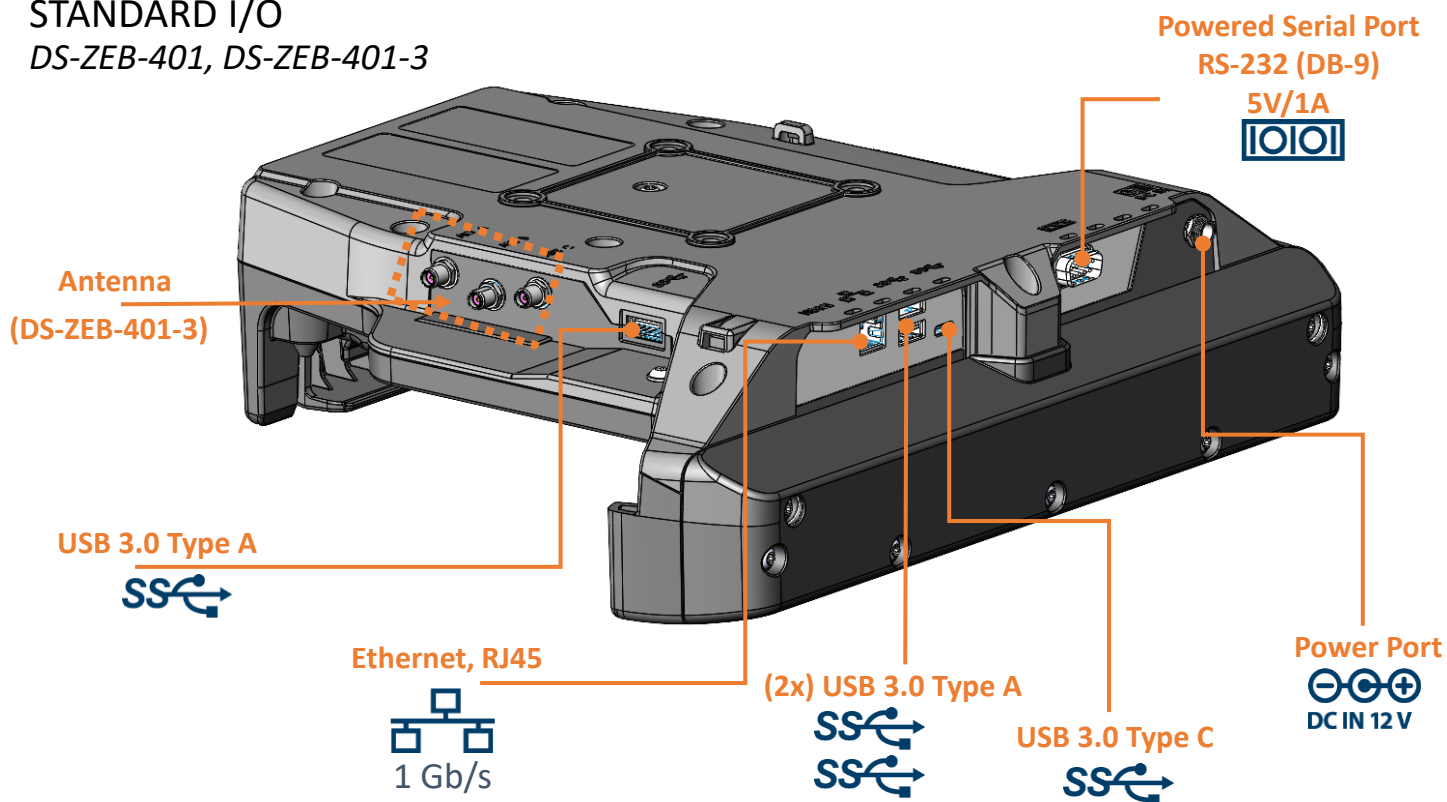
ANTENNA CONNECTORS (SMA)



Port Replication Capability

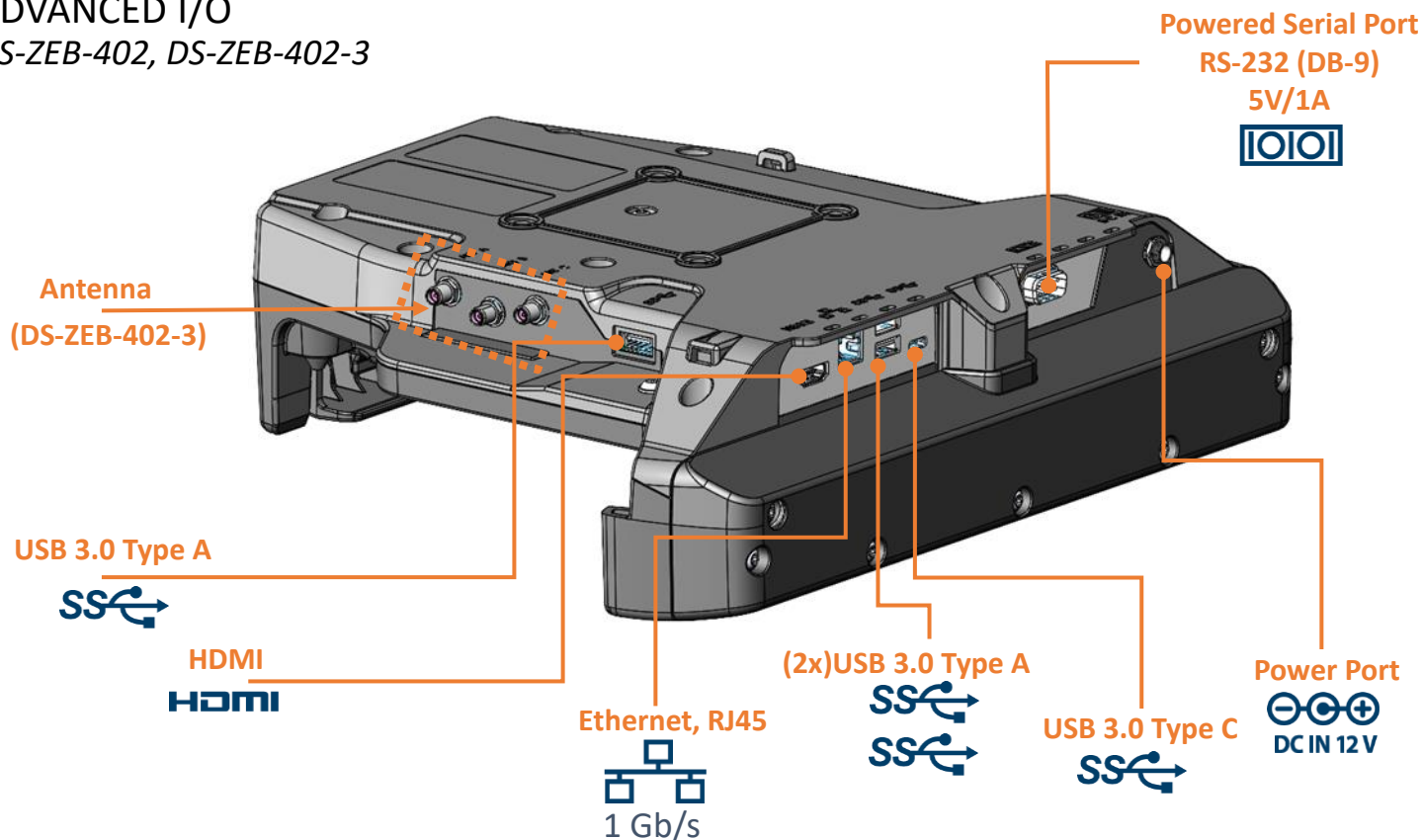
STANDARD I/O

DS-ZEB-401, DS-ZEB-401-3



ADVANCED I/O

DS-ZEB-402, DS-ZEB-402-3



Parts Included (continued)

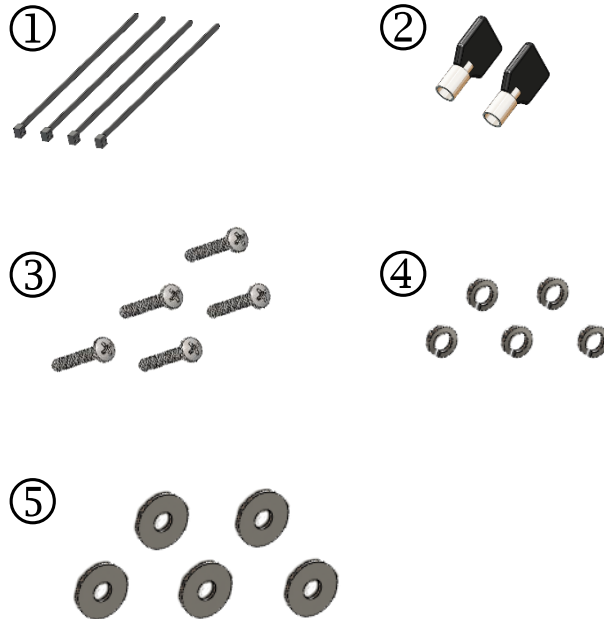
Hardware Kit (HWK-0031)

This Hardware Kit includes:

1. Zip Ties (4)
2. Keys (2)
3. M4 x 0.7 x 20mm long Pan Head Screws (5)
4. Split Lock Washers (5)
5. Washers, M4 (5)

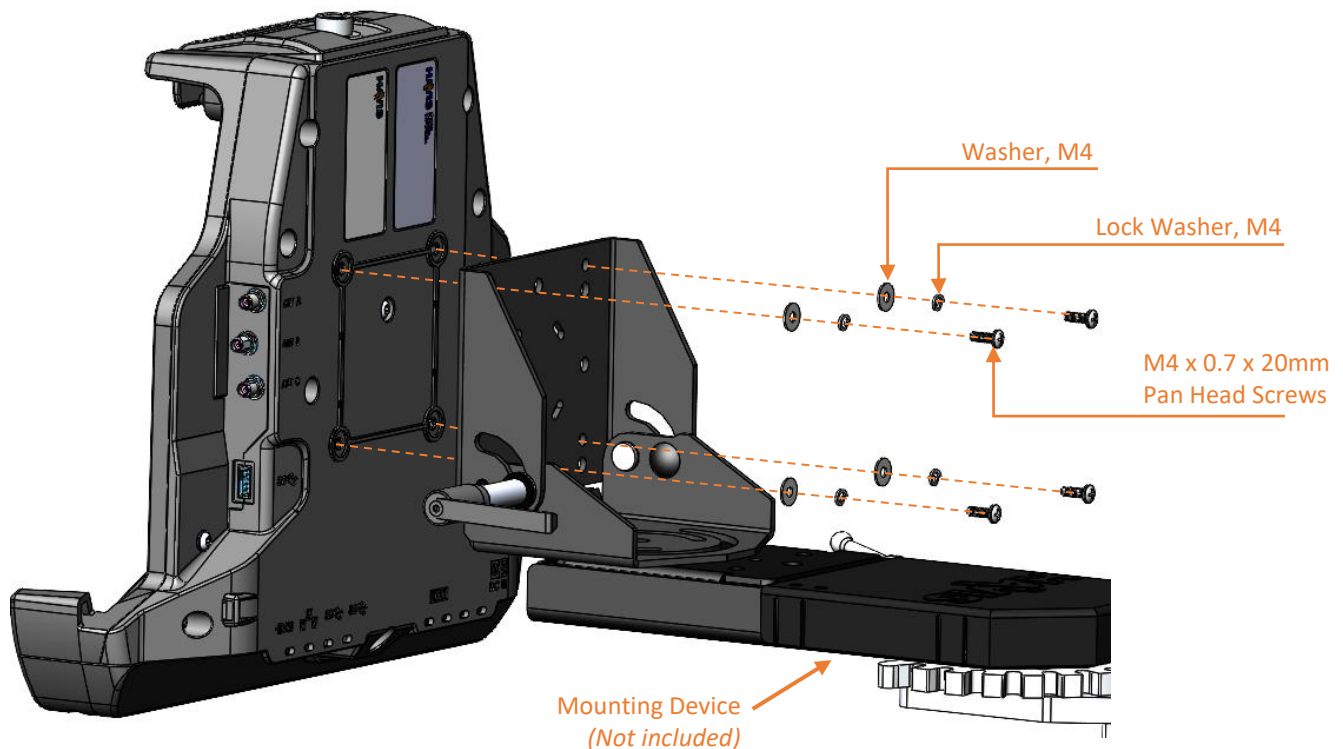
Tools required for installation:

- #2 Phillips (For M4 Pan Head Screws)



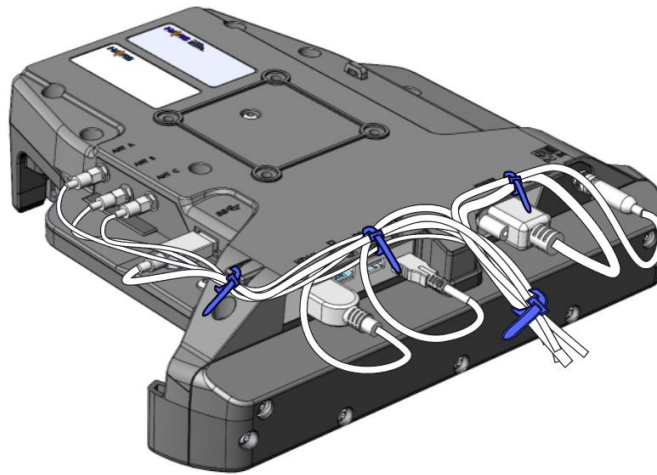
Installation

- 1) Align Docking Station mounting holes with the hole pattern on mounting device. Using the four (4) M4 0.7 x 20mm Pan Head Screws (Hardware Kit Item 3), four (4) Washers, M4 (Hardware Kit Item 5), and four (4) Lock Washers, M4 (Hardware Kit Item 4), secure the Docking Station to device. Torque screws to 20 in-lbs (2.3Nm) \pm 10%

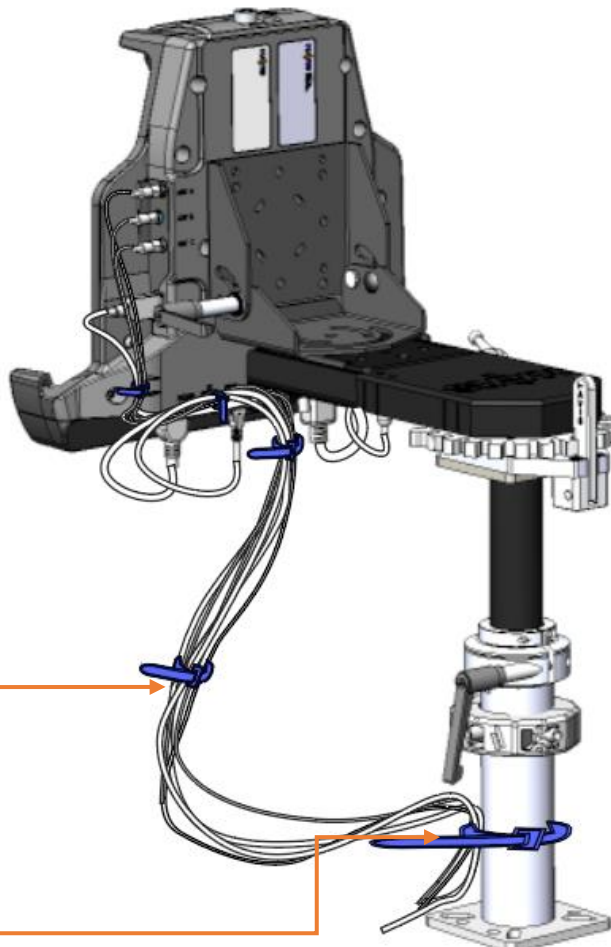


Cable Management

- 1) Tip the Docking Station to a position that is comfortable to work with.
- 2) Install all cables that are necessary for computing needs.
- 3) Use Zip Ties (Hardware Kit Item 1) and the Strain Relief Points to secure cables and reduce risk of accidental disconnects.



- 4) Create a service loop with cables to ensure that no tension is on the connectors and to enable intended motion.
- 5) Tie off cables onto a stationary part of the mounting system.



4

This loop must be large enough to allow full range of expected rotation and extension without stressing connections.

5

Collect cables to secure to the mounting system.

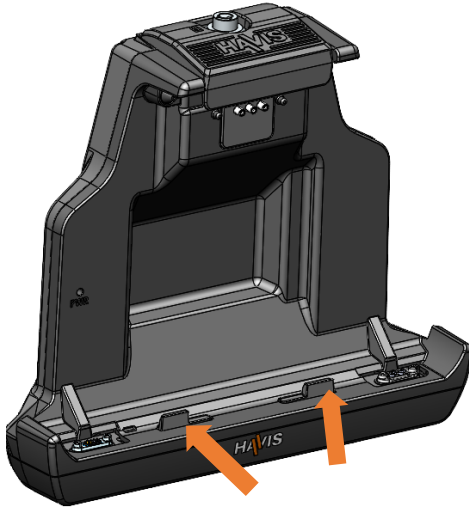
(Note: mounting system not included)

Operation - Docking

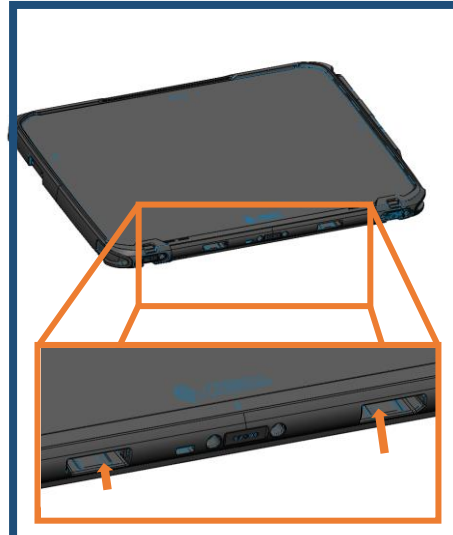
⚠ CAUTION

THE ZEBRA ET8X RUGGED FRAME MUST BE INSTALLED ONTO THE TABLET PRIOR TO DOCKING. DO NOT FORCE TABLET ONTO DOCKING STATION. IF THERE IS RESISTANCE, CHECK ALIGNMENT OF THE TABLET ON THE DOCKING STATION.

NOTE: Ensure a proper connection by aligning the tablet's Alignment Sockets with the Docking Station's Alignment Posts

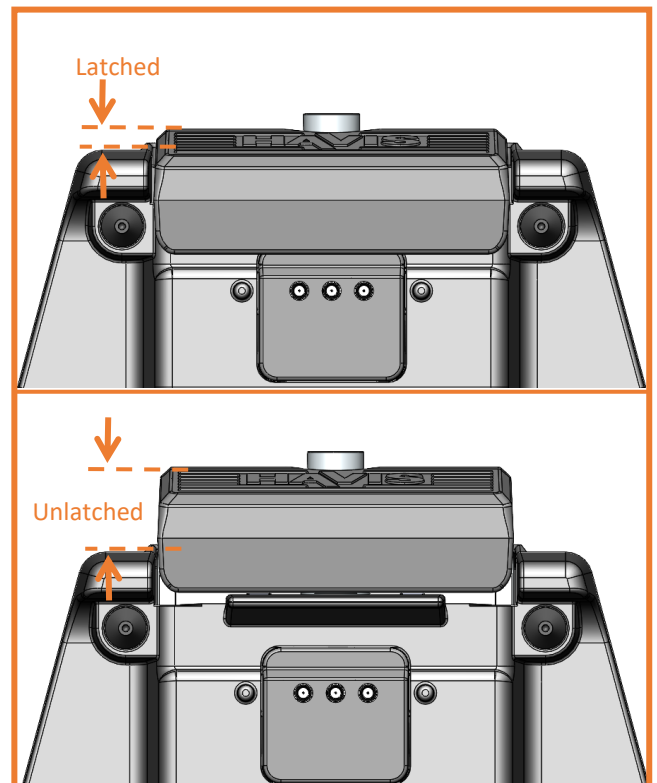
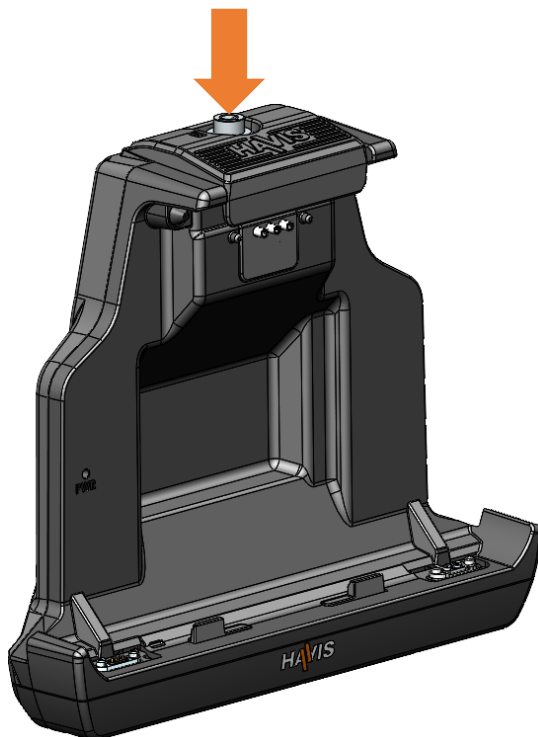


Alignment Posts on the DS-ZEB-400 Series & DS-ZEB-400 Series Docking Station



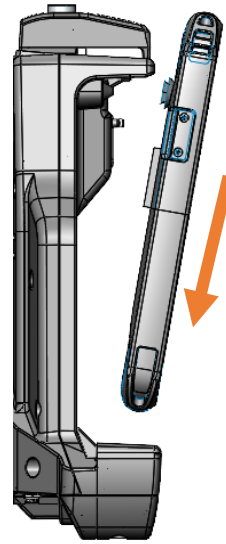
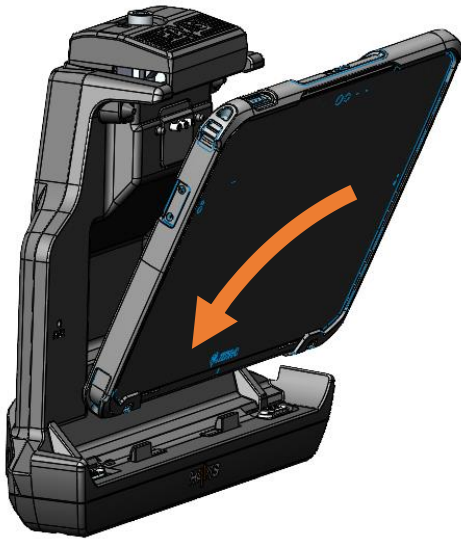
Alignment Sockets on the bottom of ZEBRA ET8X Tablet with Rugged Frame.

- 1) Docking Station must be unlatched before docking your tablet. Push down on the Lock button and release quickly.



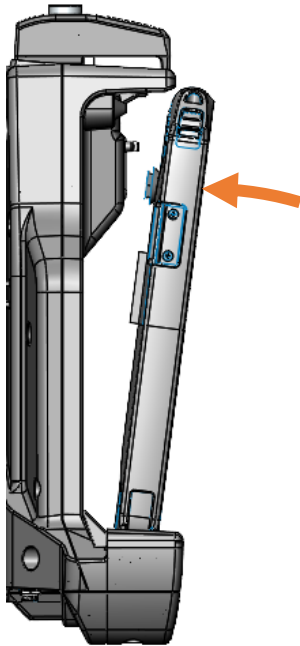
Operation - Docking

- 2) Hold the tablet in landscape orientation, and ensure the alignment sockets on the tablet are angled toward the Docking Station. Lower the tablet onto the docking connector.

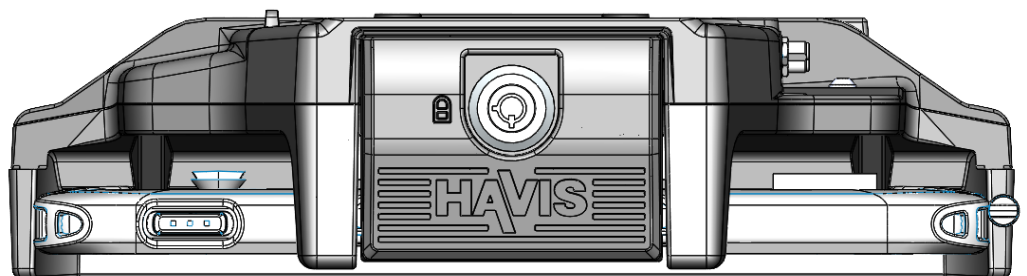


SIDE VIEW

- 3) Pivot the tablet so it sits flush in the Docking Station and hold while depressing the Latch to secure the tablet in place. You will hear an audible click when Latch Hook is fully engaged.

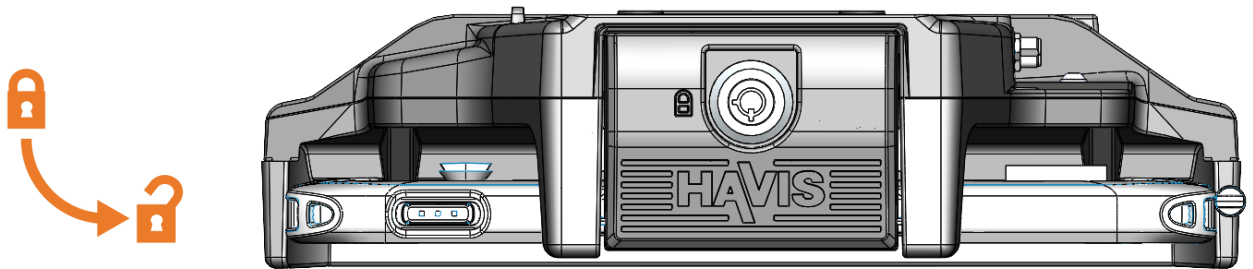


- 4) For theft deterrence, secure tablet by locking the Docking Station with supplied key (Hardware Kit Item 2).



Operation - Undocking

- 1) If previously locked, unlock the Docking Station using supplied key.



- 2) Secure tablet to avoid inadvertent ejection from Docking Station. Push down on the Lock button and release quickly taking care not to obstruct the travel of the Latch. If the Latch does not extend fully to its unlatched position, lift up lightly on the front of the Latch Hook to fully release.



- 3) Once unlatched, rock the top forward and carefully lift out of Docking Station.



Regulatory Information

Canada

CAN ICES-3 (B) / NMB-3(B)

Class B equipment

This class B digital apparatus meets all requirements of the Canadian Interference-Causing Equipment Regulations.

Équipement de classe B

Cet appareil numérique de la classe B respecte toutes les exigences du Règlement sur le matériel brouilleur du Canada.

United States of America

FCC Compliance Statement

This device complies with part 15 of the FCC Rules. Operation is subject to the following two conditions: (1) This device may not cause harmful interference, and (2) this device must accept any interference received, including interference that may cause undesired operation.

Note: This equipment has been tested and found to comply with the limits for a Class B digital device, pursuant to part 15 of the FCC Rules. These limits are designed to provide reasonable protection against harmful interference in a residential installation. This equipment generates, uses and can radiate radio frequency energy and, if not installed and used in accordance with the instructions, may cause harmful interference to radio communications. However, there is no guarantee that interference will not occur in a particular installation. If this equipment does cause harmful interference to radio or television reception, which can be determined by turning the equipment off and on, the user is encouraged to try to correct the interference by one or more of the following measures:

- Reorient or relocate the receiving antenna.
- Increase the separation between the equipment and receiver.
- Connect the equipment into an outlet on a circuit different from that to which the receiver is connected.
- Consult the dealer or an experienced radio/TV technician for help.

Changes or modifications not expressly approved by the party responsible for compliance could void the user's authority to operate the equipment.

Responsible party (contact for FCC matters only):

Havis, Inc.
75 Jacksonville Road
Warminster, PA 18974
havis.com/contact-us

Regulatory Information *(continued)*

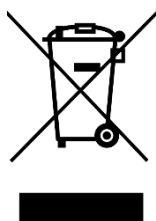
European Union

Waste Electrical and Electronic Equipment (WEEE)

Electrical and electronic equipment (EEE) contain materials, components and substances that can be hazardous and harmful to human health and the environment when WEEE is not disposed of properly.

Products marked with the "crossed-out wheeled bin" symbol are EEE. The crossed-out wheeled bin symbolizes that WEEE must not be disposed of together with unsorted household waste, but must be collected separately.

For this purpose, all municipalities have established collection schemes where WEEE can be handed in, free of charge, by citizens at recycling stations or other collection points or collected directly from households. Further information should be obtained from the municipality's technical administration.



This symbol on the product or on its packaging indicates that the product must not be disposed of with normal household waste. Instead, it is your responsibility to dispose of your waste equipment by arranging to return it to a designated collection point for the recycling of WEEE. By separating and recycling your waste equipment at the time of disposal, you will help to conserve natural resources and ensure that the equipment is recycled in a manner that protects human health and the environment. This product is EEE and shall not be placed in the municipal waste after end of its life. This device should be handled properly and handed over to appropriate collection places or to authorized companies.

European Union Declaration of Conformity



The CE marking on a Havis product indicates conformity to the provisions of applicable European Union (EU) directives. The EU Declaration of Conformity (DoC) is the manufacturer's declaration that the product complies with those directives.

Related Products

Havis offers a wide variety of accessory products specifically for use with your Docking Station. For more information or to order, please visit www.havis.com.



DS-DA-502

Replacement Keys

Set of (2) replacement keys for HAVIS Docking Stations



LPS-189

Power Supply w/Cigarette Input Cable



LPS-190

Isolated Power Supply w/Hardwired Input Cable

LPS-191

Isolated Power Supply w/Hardwired Input Cable



CG-X

ChargeGuard-Select

Auto Shut-Off timer that will protect your vehicles battery and peripherals



DS-DA-604

Rugged USB-C Port Replication Hub

Two Type C and two Type A USB3.1 ports and a Gigabit RJ45 port



LPS-175

60W DC-DC vehicle adaptor Vehicle Adapter With USB-C Output for charging the ET8x in the DS-ZEB-403



DS-DA-218

Desktop Stand

Durable stand for mounting the Docking Station in the home or office.